

**GILMER
INDEPENDENT SCHOOL DISTRICT**
COMPREHENSIVE ANNUAL FINANCIAL REPORT
FOR THE YEAR ENDED AUGUST 31, 2017

***Gilmer ISD
Educational Mission***

Gilmer ISD:

Prepares every student for the collegiate experience

Recognizes and educates each child as a unique individual

Nurtures academic, social, and cultural differences

Develops self-reliant citizens who contribute to the community's success and strength

**PREPARED BY
GILMER INDEPENDENT SCHOOL DISTRICT
BUSINESS OFFICE
500 SOUTH TRINITY STREET
GILMER, TEXAS 75644**

Gilmer Independent School District
Comprehensive Annual Financial Report
For The Year Ended August 31, 2017

TABLE OF CONTENTS

	<u>Page</u>	<u>Exhibit/Table</u>
 INTRODUCTORY SECTION		
Letter of Transmittal.....	1	
GFOA Certificate of Achievement.....	7	
Organizational Chart.....	8	
List of Principal Officials.....	9	
Certificate of Board.....	10	
 FINANCIAL SECTION		
Independent Auditors' Report.....	11	
Management's Discussion and Analysis (Required Supplementary Information).....	14	
 <u>Basic Financial Statements</u>		
Government-wide Financial Statements:		
Statement of Net Position.....	25	Exhibit A-1
Statement of Activities.....	26	Exhibit B-1
Fund Financial Statements:		
Balance Sheet - Governmental Funds.....	28	Exhibit C-1
Reconciliation of the Governmental Funds		
Balance Sheet to the Statement of Net Position.....	29	Exhibit C-1R
Statement of Revenues, Expenditures, and Changes in		
Fund Balances - Governmental Funds.....	30	Exhibit C-2
Reconciliation of the Statement of Revenues, Expenditures, and Changes in		
Fund Balances of Governmental Funds to the Statement of Activities.....	31	Exhibit C-3
Statement of Net Position - Proprietary Funds.....	32	Exhibit D-1
Statement of Revenues, Expenses, and Changes in		
Fund Net Position - Proprietary Funds.....	33	Exhibit D-2
Statement of Cash Flows - Proprietary Funds.....	34	Exhibit D-3
Statement of Fiduciary Net Position - Fiduciary Funds.....	35	Exhibit E-1
Statement of Changes in Fiduciary Net Position - Fiduciary Funds.....	36	Exhibit E-2
Notes to the Financial Statements	37	
 <u>Required Supplementary Information</u>		
Budgetary Comparison Schedules:		
General Fund.....	56	Exhibit G-1
Schedule of the District's Proportionate Share of the		
Net Pension Liability - Teacher Retirement System.....	58	Exhibit G-2
Schedule of District's Contributions - Teacher Retirement System.....	59	Exhibit G-3
Notes to Required Supplementary Information.....	60	

Gilmer Independent School District
Comprehensive Annual Financial Report
For The Year Ended August 31, 2017

TABLE OF CONTENTS

	<u>Page</u>	<u>Exhibit/Table</u>
<u>Combining Statements and Budget Comparisons as Supplementary Information:</u>		
Combining Balance Sheet - All Nonmajor Governmental Funds.....	64	Exhibit H-1
Combining Statement of Revenues, Expenditures and Changes in Fund Balances - All Nonmajor Governmental Funds.....	65	Exhibit H-2
Special Revenue Funds:		
Combining Balance Sheet - Nonmajor Special Revenue Funds.....	66	Exhibit H-3
Combining Statement of Revenues, Expenditures and Changes in Fund Balances - Nonmajor Special Revenue Funds.....	70	Exhibit H-4
Budgetary Comparison Schedules Required by the Texas Education Agency:		
National School Breakfast and Lunch Program.....	74	Exhibit H-5
Debt Service Fund.....	75	Exhibit H-6
Enterprise Funds:		
Combining Statement of Net Position - Nonmajor Enterprise Funds.....	78	Exhibit H-7
Combining Statement of Revenues, Expenses and Changes in Fund Net Position - Nonmajor Enterprise Funds.....	79	Exhibit H-8
Combining Statement of Cash Flows - Nonmajor Enterprise Funds.....	80	Exhibit H-9
Fiduciary Funds:		
Private-Purpose Trust Funds:		
Combining Statement of Fiduciary Net Position.....	82	Exhibit H-10
Combining Statement of Changes in Fiduciary Net Position.....	83	Exhibit H-11
Agency Funds:		
Combining Statement of Changes in Assets and Liabilities.....	84	Exhibit H-12
 OTHER SUPPLEMENTARY INFORMATION SECTION		
Schedule of Delinquent Taxes Receivable.....	86	Exhibit J-1
 STATISTICAL SECTION		
Net Position by Component.....	89	Table L-1
Expenses, Program Revenues, and Net (Expense)/Revenue.....	90	Table L-2
General Revenues and Total Change in Net Position.....	92	Table L-3
Fund Balances of Governmental Funds.....	93	Table L-4
Changes in Fund Balances of Governmental Funds.....	94	Table L-5
Assessed Value and Estimated Actual Value of Taxable Property.....	96	Table L-6
Direct and Overlapping Property Tax Rates.....	97	Table L-7
Principal Property Tax Payers.....	98	Table L-8
Property Tax Levies and Collections.....	99	Table L-9
Ratios of Outstanding Debt by Type.....	100	Table L-10

Gilmer Independent School District
Comprehensive Annual Financial Report
For The Year Ended August 31, 2017

TABLE OF CONTENTS

	<u>Page</u>	<u>Exhibit/Table</u>
Ratios of General Bonded Debt Outstanding.....	101	Table L-11
Direct and Overlapping Governmental Activities Debt.....	102	Table L-12
Legal Debt Margin Information.....	103	Table L-13
Demographic and Economic Statistics.....	104	Table L-14
Principal Employers.....	105	Table L-15
Full-Time-Equivalent Employees by Function/Program.....	106	Table L-16
Operating Statistics.....	107	Table L-17
Teacher Base Salaries.....	108	Table L-18
School Building Information.....	109	Table L-19

SINGLE AUDIT SECTION

Report on Internal Control over Financial Reporting and on Compliance and Other Matters Based on an Audit of Financial Statements Performed in Accordance with <i>Government Auditing Standards</i>	111	
Report on Compliance for Each Major Program and on Internal Control over Compliance Required by Title 2 CFR Part 200 (Uniform Guidance).....	113	
Schedule of Findings and Questioned Costs	115	
Summary Schedule of Prior Audit Findings.....	116	
Corrective Action Plan.....	117	
Schedule of Expenditures of Federal Awards	118	Exhibit K-1
Notes to the Schedule of Expenditures of Federal Awards.....	120	

Introductory Section



GILMER INDEPENDENT SCHOOL DISTRICT

Administration Building

500 S. Trinity
Gilmer, Texas 75644
(903) 841-7400

High School

850 Buffalo
Gilmer, Texas 75644
(903) 841-7500

Junior High

111 Bruce St.
Gilmer, Texas 75644
(903) 841-7600

Intermediate School

1623 U.S. Highway 271 N.
Gilmer, Texas 75644
(903) 841-7800

Elementary School

1625 U.S. Highway 271 N.
Gilmer, Texas 75644
(903) 841-7700

February 21, 2018

To the Board of Trustees and the Citizens
Of Gilmer Independent School District

The Comprehensive Annual Financial Report (CAFR) of the Gilmer Independent School District (the "District") for the fiscal year ended August 31, 2017 is submitted herewith. This report has been prepared by the District's Business Office, with responsibility for the accuracy, fairness and completeness of the data resting with the District.

We believe the data is accurate in all material aspects and that it is presented in a manner designed to fairly set forth the financial position and results of operations of the District as measured by the financial action of its various funds. We trust that all disclosures necessary to enable the reader to gain maximum understanding of the District's financial activities have been included.

Generally accepted accounting principles (GAAP) require that management provide a narrative introduction, overview and analysis to accompany the basic financial statements in the form of Management's Discussion and Analysis (MD&A). This letter of transmittal is designed to complement the MD&A and should be read in conjunction with it. Gilmer Independent School District's MD&A can be found immediately following the report of the independent auditors.

Gilmer Independent School District's financial statements have been audited by Karen A. Jacks & Associates, P.C., a firm of licensed certified public accountants. The goal of the independent audit was to provide reasonable assurance that the financial statements of the Gilmer Independent School District for the fiscal year ended August 31, 2017, are free of material misstatement. The independent audit involved examining, on a test basis, evidence supporting the amounts and disclosures in the financial statements; assessing the accounting principles used and significant estimates made by management; and evaluating the overall financial statement presentation. The independent auditor concluded, based upon the audit, that there was a reasonable basis for rendering an unqualified opinion that Gilmer Independent School District's financial statements for the fiscal year ended August 31, 2017, are fairly presented in conformity with GAAP. The independent auditors' report is presented as the first component of the financial section of this report.

The independent audit of the financial statements of Gilmer Independent School District was part of a broader, federally mandated "Single Audit" designed to meet the special needs of federal grantor agencies. The standards governing Single Audit engagements require the independent auditor to report not only on the fair presentation of the financial statements, but also on the audited government's internal controls and compliance with legal requirements, with special emphasis on internal controls and legal requirements involving the administration of federal awards. These reports are available in the Single Audit Section of this Report.

Accounting System and Budgetary Control

The accounts of the District are organized on the basis of funds, each of which is considered a separate and distinct accounting entity. The operations of each fund are accounted for with a separate set of self-balancing accounts that comprise its assets, liabilities, fund equity, revenues and expenditures/expenses. Revenues are allocated to and accounted for in individual funds based upon the purpose for which they are to be expended and the means by which spending activities are controlled. The accounting records for general governmental operations are maintained on the modified accrual basis, with revenues being recorded when available and measurable and expenditures being recorded when materials or services are received and the liability is incurred. Accounting records for the District's enterprise funds, internal service fund, and agency funds are maintained on the accrual basis of accounting.

Management of the District is responsible for establishing and maintaining a system of internal accounting controls. These controls are designed to assure that the assets of the District are safeguarded against any material loss, theft or misuse. These controls assure that the financial statements are in conformity with generally accepted accounting principles. Internal accounting controls are designed to provide reasonable, but not absolute, assurance that control objectives will be met. The concept of reasonable assurance recognizes that (1) the cost of control should not exceed the benefits likely to be derived; and (2) the evaluation of costs and benefits require estimates and judgment by Management.

The annual budget serves as the foundation for the District's financial planning and control. All campuses and other service departments of the District are required to submit requests for appropriation to the Superintendent annually. The Superintendent and Business Manager use these requests as the starting point for developing a proposed budget. The Superintendent then presents this proposed budget to the Board of Trustees for review prior to August 31. The Board is required to hold public hearings on the proposed budget and to adopt a final budget by no later than August 31, the close of the District's fiscal year. The appropriated budget is prepared by fund and function. Administrators may make transfers of appropriations within a function. Transfers of appropriations between functions, however, require the special approval of the Board of Trustees. Budget-to-actual comparisons are provided in this report for each major governmental fund for which an appropriated annual budget has been adopted. For the general fund, this comparison is presented in Exhibit G-1 of the Annual Financial Report as required supplementary information.

Profile of the District

Gilmer Independent School District provides educational services ranging from pre-kindergarten through grade twelve. These include regular and enriched academic education, gifted/talented programs, special education services for children with learning disabilities, vocational education, and special programs for those with limited English proficiency. These programs are supplemented by a wide variety of offerings in fine arts and athletics. Service departments of the District ensure that student needs for transportation, nutrition, guidance, counseling, and facilities maintenance are addressed.

The refined average daily attendance of the District for 2016-2017 was 2,243, with enrollment ranging from a high of 2,429 students to 2,386 on the last day of classes. Projected enrollment for the 2017-2018 fiscal year is 2,400 students. District instructional campuses include one high school, one junior high, one intermediate, and one elementary. Numerous other facilities enhance and support the educational and extracurricular activities of the students. The District's instructional facilities currently range in age from eleven to sixty-seven years old.

A seven-member board of trustees elected at large governs the District. Each member is elected to a three-year term with the elections being staggered so that not all positions are voted on during the same year. See page 9 for a listing of the present members of the Board of Trustees, along with the administrative officials who are hired and approved by the Board.

Monthly meetings of the Board are posted and advertised as prescribed under state law so that the Board may meet to fulfill its charge to the students, parents, staff and taxpayers of the District. Special meetings or study sessions are scheduled as needed. A majority of the members of the Board (four members) constitutes a quorum for the transaction of business.

The Board has final control of all school matters except as limited by state law, the courts, and the will of its citizenry as expressed by elections. The Board's general responsibilities are to set policy for the District, to ensure efficient operations, to select and evaluate the Superintendent of Schools, to adopt an annual budget and its supporting tax rate, and to foster good community relations and communications.

Factors Affecting Financial Condition

Local economy. The Gilmer Independent School District, including the City of Gilmer, the county seat of Upshur County, is located in North East Texas, 20 miles from the City of Longview and 35 miles from the City of Tyler. The current population of the City of Gilmer is estimated at 4,905 with Upshur County population estimated at approximately 40,000.

Upshur County's economy is based primarily on agribusiness, manufacturing, and oil and gas production. Median household income was estimated at \$44,351. Major agricultural products are related to forestry production and dairy farming.

The District, City and immediate vicinity are the home of many diversified businesses. Local companies include manufacturers of conduit, refrigeration parts, machined parts, and wood treatment in addition to several banks, insurance agencies, restaurants, and retail businesses. The City has been designated a Texas Main Street City, winning the 1999 Main Street City of the Year award. The City has a multi-purpose Civic Center that hosts an array of fine arts and local events.

Lake Gilmer stands ready to supply the future water needs of Upshur County. The 900-plus acre lake offers an opportunity for the city to sell water to help recruit industry to the area in addition to the recreational activities it offers.

The Upshur County Economic Development Board continues seeking business development opportunities. The Upshur County Economic Development Board offers a number of financial incentives, based on the number of jobs created and the total investment, for financially sound businesses that are willing to locate in Gilmer. Over the past few fiscal years, the city and county have experienced economic growth as evidenced in the construction of single family homes and multi-family housing units in addition to business construction.

Long-term financial planning. The District has experienced an overall decrease in property valuation of approximately 3.13% over the past 10 years. Assessed values increased from \$812,093,046 in 2016 to \$817,884,213 in 2017, and that increase was primarily attributable to an increase in personal property values. In spite of an upward trend in values between tax years 2007 and 2010, the District experienced net declines in value between 2010 and 2016 as a result of declines in mineral values that were only partially offset by increased values for residential, rural, industrial and personal property values. In addition, the District's homestead exemption was increased by State law between tax years 2015 and 2016.

For fiscal year 2017, Gilmer I.S.D. received approximately 49% of its general revenue from taxes, 49% from state aid, federal programs and specific grants, and 2% from miscellaneous local sources. Changes to the State school funding formulas have attempted to equalize local wealth among school districts,

provide local tax relief to property owners, and provide discretionary funds to districts. Legislative action under House Bill 1(HB1) significantly changed the state funding formulas. The first phase of property tax reduction under (HB1) began in fiscal year 2007 and reduced the ceiling on local maintenance and operation tax rates from 1.50 to 88.67% of the previous year's tax rate (1.28 for Gilmer ISD). Also built into the formula was the local option to levy an additional .04 to be used as "discretionary funds." Gilmer ISD opted to levy the additional .04 for a total tax rate of 1.32, the maximum allowed without a rollback election. Beginning in fiscal year 2008, the maximum tax rate allowed without a rollback election was 1.04, which was the maintenance and operation tax rate adopted by Gilmer ISD from fiscal year 2008 through fiscal year 2013. The District held a Tax Ratification Election (TRE) in November 2013, which was approved by the voters of the district. As a result, the District maintenance and operation tax rate increased from 1.04 to 1.17 and the interest and sinking tax rate decreased from 0.145 to 0.015. The total tax rate stayed the same at 1.185. Financial information related to the TRE is included later in the report. The interest and sinking tax rate increased from 0.015 to .05 in fiscal year 2016. The total tax rate beginning in tax year 2015 was 1.22.

As stated above, the voters of Gilmer ISD approved a Tax Ratification Election (TRE) in November 2013. The benefit of the TRE passage was additional state aid due to a higher state yield per penny on the maintenance and operations tax rate above 1.04. No state yield is earned on the interest and sinking tax rate. As a result of the election, instead of earning a higher yield on four cents, the District earned a higher yield on seventeen cents, thereby earning the District approximately \$200,000 in additional state funding without increasing the overall tax rate. Local tax collections from the maintenance and operations funds were transferred to the interest and sinking fund to make scheduled bond payments.

During the 2015 Legislative session, the state homestead exemption was increased by \$10,000. This exemption increase resulted in a loss of local property tax revenue of approximately \$450,000 for the 2015-2016 fiscal year. A hold harmless provision in the state aid calculation offset the loss in tax revenue.

Gilmer ISD uses a priority-based budget to plan for the financial goals of the district. The District adopted the 2016-2017 fiscal year budget for excess revenue in the amount of \$773,000. This was the estimated amount to be transferred from the general fund to the interest and sinking fund for bond payments. The actual amount transferred was \$755,000, which was \$18,000 less than anticipated. The original budget adopted by the Board of Trustees was \$20,250,220. The year ended with a decrease of \$943,921 in the general fund balance. The District budgeted to spend excess fund balance. The District experienced a decrease in their average daily attendance and the number of school days. This resulted in a significant change in state funding. The 2016-2017 fiscal year budget included a 3% pay raise for teachers and 3% for all other District personnel.

To become more reactive to the needs of staff in delivering the District's curriculum, a site-based committee is included in the District budgeting process. This process provides for more equitable opportunities for all staff to have input in the budgeting and expenditure of District funds. A District level committee was established to ensure that staff input was provided. This committee reviewed the submitted budget, ensured that it met District goals, and then provided it to the Superintendent for submission to the Board of Trustees.

The District has been active in seeking outside funding to enhance local tax efforts. Prior to the 2011 Legislative session, the District had received supplemental grant funding for extended school year, pre-kindergarten extended day, accelerated reading and math instruction, reduced class size, and technology funds to enhance the local budget. The grant funding for most of these programs was eliminated beginning with the 2011-2012 fiscal year due to state and federal funding cuts; however, the District continued to offer and fund full day pre-kindergarten and supplemental reading and math instruction. Class sizes were increased District wide, and technology needs were fully funded from the general operating budget. Applications for E-rate discounts have been successful and have brought discounts in excess of 70% on the rates for telecommunication and internet access. The District continues to apply for grants that are available to supplement the District general funds in order to provide positive opportunities for all students. The District is optimistic that eliminations and cuts to state and federal grant programs will be restored as revenue becomes available.

The District maintains a five-year plan of future maintenance requirements and/or needs. This list currently identifies needs of approximately \$150,000 in future expenditures, mostly the result of aged HVAC units and roofs. Some maintenance projects completed during the 2016-2017 school year included replacing HVAC units, roof repairs, and the asbestos abatement of a building no longer being used. The remaining needs will be budgeted on a priority basis and approved by the Board of Trustees in accordance with state purchasing laws.

Relevant financial policies. Gilmer ISD adheres to the legal requirements as set forth in Sections 44.002 through 44.006 of the Texas Education Code and by the Texas Education Agency each year as it prepares and adopts the annual budget. In addition to these requirements, the District establishes procedures to be followed by District administration and staff members during the annual budget process. These procedures are outlined in the Gilmer ISD Budget Manual. The District monitors revenue estimates and actual expenditures throughout the year and makes necessary adjustments to maintain the integrity of the budget. Periodically the District gains access to a one-time revenue source.

Major initiatives. During the 2016-2017 fiscal year, the District continued to make investments in capital assets, instructional equipment, and facility maintenance and improvements. The District purchased two buses, replaced the District's fuel management system, replaced several aged HVAC units, and contracted for the asbestos abatement of a building no longer being used. The District also entered into an Energy Savings Project which will reduce energy usage and is anticipated to result in significant savings to the District in the future. A major initiative of Gilmer ISD continues to be the achievement of the Texas Education Agency's highest accountability rating. Under the current system, Met Standard is the highest rating that can be received. The Met Standard rating was achieved by the District and all four campuses for the 2016-2017 school year. In addition to achieving this highest rating, three campuses received a total of twelve out of twenty possible Distinctions in specified areas. The District will continue in its initiative to achieve the Texas Education Agency highest ratings and distinctions. As a result of the 2016-2017 test results, the District continues to target reading and math instruction on the elementary and middle school campuses by providing specialists in these areas as well as additional instructional resources. The use of co-teaching at the Junior High and High School campuses has resulted in significant gains in math test scores.

Awards

The Government Finance Officers Association of the United States and Canada (GFOA) awarded a Certificate of Achievement for Excellence in Financial Reporting to Gilmer Independent School District for its comprehensive annual financial report for the fiscal year ended August 31, 2016. This was the seventeenth consecutive year that the District has achieved this prestigious award. In order to be awarded a Certificate of Achievement, a government must publish an easily readable and efficiently organized comprehensive annual financial report. This report must satisfy both generally accepted accounting principles and applicable legal requirements.

A Certificate of Achievement is valid for a period of one year only. We believe that our current comprehensive annual financial report continues to meet the Certificate of Achievement Program requirements and we are submitting it to the GFOA to determine its eligibility for another certificate.

The District achieved a rating of "Superior Achievement" on the Texas Education Agency's Financial Integrity Rating System of Texas (FIRST) for the 2015-2016 fiscal year. This is the highest rating a District can receive.

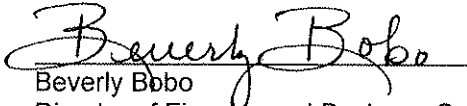
Acknowledgments

I wish to thank the members of the Board of Trustees for their continued support and for planning and conducting the financial operations of the District in a responsible and progressive manner.

I also wish to thank Mr. Rick Albritton, Superintendent of Gilmer ISD, for his willingness to share his knowledge, his continuous support, and his unselfish dedication to the students, staff, and community of Gilmer ISD.

The preparation of this report was made possible due to the support and assistance provided by the Business Office staff.

In addition, this report would not have been possible without the assistance of the staff members of Karen A. Jacks & Associates, P.C., Certified Public Accountants.

A handwritten signature in cursive script, reading "Beverly Bobo". The signature is written in black ink and is positioned above the printed name and title.

Beverly Bobo
Director of Finance and Business Services



Government Finance Officers Association

**Certificate of
Achievement
for Excellence
in Financial
Reporting**

Presented to

**Gilmer Independent School District
Texas**

For its Comprehensive Annual
Financial Report
for the Fiscal Year Ended

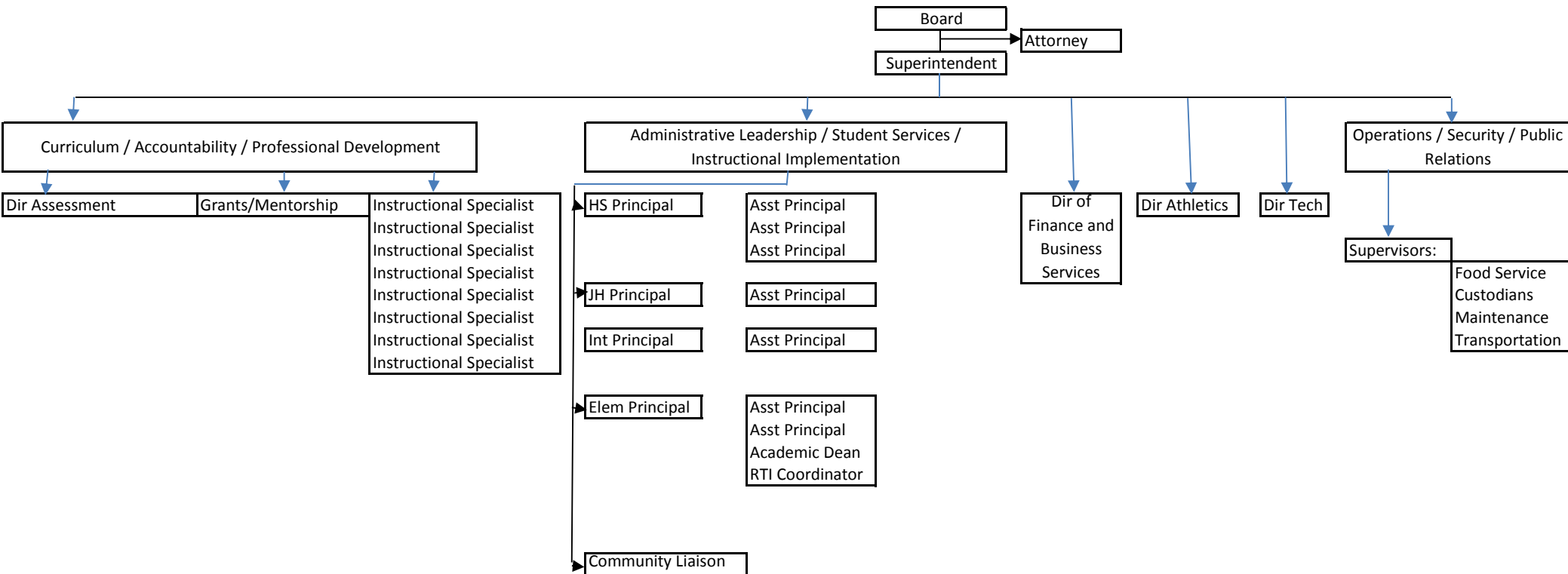
August 31, 2016

Christopher P. Morill

Executive Director/CEO

GILMER INDEPENDENT SCHOOL DISTRICT

Organizational Chart



GILMER INDEPENDENT SCHOOL DISTRICT

LIST OF PRINCIPAL OFFICIALS

AUGUST 31, 2017

Elected Officials

<u>Name</u>	<u>Office</u>
Mr. Mark Skinner	President
Mr. Kenny Southwell	Vice-President
Mrs. Gloria King	Secretary
Mr. Todd Tefteller	School Trustee
Ms. Diedra Camp	School Trustee
Mr. Clayton Tefteller	School Trustee
Mrs. Lula Johnson	School Trustee

Appointed Officials

<u>Name</u>	<u>Position</u>
Mr. Rick Albritton	Superintendent
Mr. Greg Watson	Assistant Superintendent/Instruction
Ms. Dawn Harris	Assistant Superintendent/Curriculum
Mrs. Beverly Bobo	Director of Finance and Business Services
Mr. Rusty Ivey	Director of Instructional Technology
Ms. Peggy Oden	Director of Upshur County SSA
Mr. Brian Bowman	High School Principal
Mr. William Bradshaw	Junior High School Principal
Mrs. Gina Treadway	Intermediate School Principal
Mrs. Kim Kemp	Elementary School Principal

CERTIFICATE OF BOARD

Gilmer Independent School District
Name of School District

Upshur
County

230-902
Co.-Dist. Number

We, the undersigned, certify that the attached annual financial reports of the above named school district were reviewed and (check one) 6 approved X disapproved for the year ended August 31, 2017, at a meeting of the board of trustees of such school district on the 11 day of Dec., 2017.

Gloria King
Signature of Board Secretary

Mark Skinn
Signature of Board President

If the board of trustees disapproved of the auditors' report, the reason(s) for disapproving it is (are):
(attach list as necessary)

Financial Section

KAREN A. JACKS & ASSOCIATES, P.C.

Certified Public Accountants

P.O. Box 3167
Longview, Texas 75606

Phone: 903-238-8822

1501 Colony Circle
Longview, Texas 75604

Fax: 903-238-9838

Karen A. Jacks, CPA, CGMA
Peggy J. Lantz, CPA

Sherry Davis, CPA
Chanie A. Johnson, CPA

Independent Auditors' Report

To the Board of Trustees
Gilmer Independent School District
500 Trinity Street
Gilmer, Texas 75644

Report on the Financial Statements

We have audited the accompanying financial statements of the governmental activities, the business-type activities, each major fund, and the aggregate remaining fund information of the Gilmer Independent School District ("the District") as of and for the year ended August 31, 2017, and the related notes to the financial statements, which collectively comprise the District's basic financial statements as listed in the table of contents.

Management's Responsibility for the Financial Statements

Management is responsible for the preparation and fair presentation of these financial statements in accordance with accounting principles generally accepted in the United States of America; this includes the design, implementation, and maintenance of internal control relevant to the preparation and fair presentation of financial statements that are free from material misstatement, whether due to fraud or error.

Auditors' Responsibility

Our responsibility is to express opinions on these financial statements based on our audit. We conducted our audit in accordance with auditing standards generally accepted in the United States of America and the standards applicable to financial audits contained in *Government Auditing Standards*, issued by the Comptroller General of the United States. Those standards require that we plan and perform the audit to obtain reasonable assurance about whether the financial statements are free from material misstatement.

An audit involves performing procedures to obtain audit evidence about the amounts and disclosures in the financial statements. The procedures selected depend on the auditor's judgment, including the assessment of the risks of material misstatement of the financial statements, whether due to fraud or error. In making those risk assessments, the auditor considers internal control relevant to the District's preparation and fair presentation of the financial statements in order to design audit procedures that are appropriate in the circumstances, but not for the purpose of expressing an opinion on the effectiveness of the District's internal control. Accordingly, we express no such opinion. An audit also includes evaluating the appropriateness of accounting policies used and the reasonableness of significant accounting estimates made by management, as well as evaluating the overall presentation of the financial statements.

We believe that the audit evidence we have obtained is sufficient and appropriate to provide a basis for our audit opinions.

Opinions

In our opinion, the financial statements referred to above present fairly, in all material respects, the respective financial position of the governmental activities, the business-type activities, each major fund, and the aggregate remaining fund information of Gilmer Independent School District as of August 31, 2017, and the respective changes in financial position, and, where applicable, cash flows thereof for the year then ended in accordance with accounting principles generally accepted in the United States of America.

Other Matters

Required Supplementary Information

Accounting principles generally accepted in the United States of America require that the Management's Discussion and Analysis, budgetary comparison information, schedule of the District's proportionate share of the net pension liability and schedule of District pension contributions identified as Required Supplementary Information in the table of contents be presented to supplement the basic financial statements. Such information, although not a part of the basic financial statements, is required by the Governmental Accounting Standards Board, who considers it to be an essential part of financial reporting for placing the basic financial statements in an appropriate operational, economic, or historical context. We have applied certain limited procedures to the Required Supplementary Information in accordance with auditing standards generally accepted in the United States of America, which consisted of inquiries of management about the methods of preparing the information and comparing the information for consistency with management's responses to our inquiries, the basic financial statements, and other knowledge we obtained during our audit of the basic financial statements. We do not express an opinion or provide any assurance on the information because the limited procedures do not provide us with sufficient evidence to express an opinion or provide any assurance.

Other Information

Our audit was conducted for the purpose of forming opinions on the financial statements that collectively comprise the Gilmer Independent School District's basic financial statements. The introductory section and combining nonmajor fund financial statements, and the unaudited statistical section are presented for purposes of additional analysis and are not required parts of the basic financial statements. The schedule of expenditures of federal awards is presented for purposes of additional analysis as required by Title 2 U.S. Code of Federal Regulations Part 200, *Uniform Administrative Requirements, Cost Principles, and Audit Requirements for Federal Awards*, and is also not a required part of the basic financial statements.

The combining nonmajor fund financial statements and other supplementary information required by the Texas Education Agency identified as Exhibits H-1 through H-12 and J-1, and the schedule of expenditures of federal awards are the responsibility of management and were derived from and relate directly to the underlying accounting and other records used to prepare the basic financial statements. Such information has been subjected to the auditing procedures applied in the audit of the basic financial statements and certain additional procedures, including comparing and reconciling such information directly to the underlying accounting and other records used to prepare the basic financial statements or to the basic financial statements themselves, and other additional procedures in accordance with auditing standards generally accepted in the United States of America. In our opinion, the combining nonmajor fund financial statements and other supplementary information and the schedule of expenditures of federal awards are fairly stated in all material respects in relation to the basic financial statements as a whole.

The introductory section and the unaudited statistical section have not been subjected to the auditing procedures applied in the audit of the basic financial statements and, accordingly, we do not express an opinion or provide any assurance on them.

Other Reporting Required by *Government Auditing Standards*

In accordance with *Government Auditing Standards*, we have also issued our report dated December 5, 2017 on our consideration of Gilmer Independent School District's internal control over financial reporting and on our tests of its compliance with certain provisions of laws, regulations, contracts, and grant agreements and other matters. The purpose of that report is to describe the scope of our testing of internal control over financial reporting and compliance and the results of that testing, and not to provide an opinion on internal control over financial reporting or on compliance. That report is an integral part of an audit performed in accordance with *Government Auditing Standards* in considering Gilmer Independent School District's internal control over financial reporting and compliance.

Karen A. Jacks & Associates, P.C.

Karen A. Jacks & Associates, P.C.

Longview, Texas
December 5, 2017

MANAGEMENT'S DISCUSSION AND ANALYSIS

This section of Gilmer Independent School District's annual financial report presents our discussion and analysis of the District's financial performance during the fiscal year ended August 31, 2017. Please read it in conjunction with the District's financial statements, which follow this section.

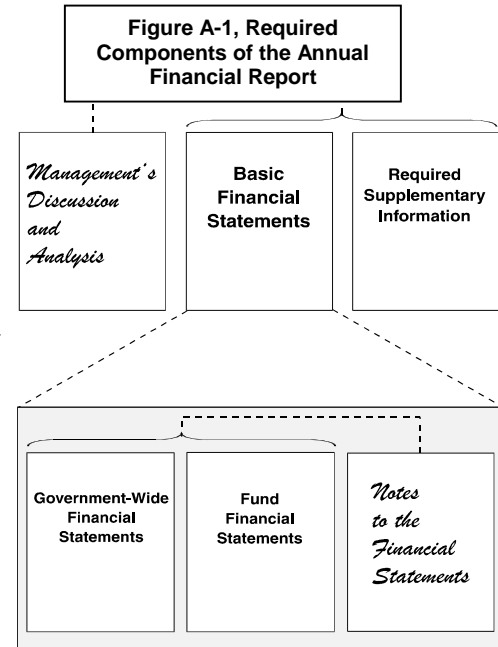
FINANCIAL HIGHLIGHTS

- The District's total net position was \$5,630,404 at August 31, 2017. This was a decrease of \$1,737,539 from the previous fiscal year. Major factors contributing to the decrease are declines in local property tax collections, a decrease in state aid due to declines in enrollment and attendance, and a decrease in revenue attributed to the decrease in attendance days for August 2017.
- During the year, the District's General Fund expenditures were \$829,169 more than the \$20,744,286 generated in taxes and other revenues for governmental activities.
- The total cost of the District's programs increased by \$749,775 from the previous year. The General Operating Fund expenditures increased \$504,234, which was primarily due to salary increases, capital asset purchases, HVAC replacement projects, and expenses associated with an Energy Savings Project. Total costs in the Other Governmental Funds increased \$245,541 from the previous year.
- The District made investments in capital asset acquisitions (\$273,767), facility maintenance and improvements (\$128,782), and an Energy Savings Project (\$387,925) for a total cost of \$790,474 during the fiscal year ending August 31, 2017. In addition to these investments, the District invested \$90,000 in small equipment purchases.
- The General Fund reported a fund balance of \$3,636,458 at fiscal year end, which was a decrease of \$943,921 from the previous year.
- The District transferred \$755,000 from the General Operating Fund to the Interest and Sinking Fund for bond payments as a result of the Tax Ratification Election that was approved by voters in fiscal year 2014.
- The overall financial position of Gilmer Independent School District experienced an unanticipated decline in both fund balance and net position in FY2017; however, the District is aware of opportunities for additional revenue in FY2018 and will use the excess funds to replenish a large portion of the decline. The District's tax base had a slight increase in fiscal year 2017 due primarily to land and improvements.

OVERVIEW OF THE FINANCIAL STATEMENTS

This annual report consists of three parts—*management's discussion and analysis* (this section), the *basic financial statements*, and *required supplementary information*. The basic financial statements include two kinds of statements that present different views of the District:

- The first two statements are *government-wide financial statements* that provide both *long-term* and *short-term* information about the District's overall financial status.
- The remaining statements are *fund financial statements* that focus on *individual parts* of the government, reporting the District's operations in more detail than the government-wide statements.
- *The governmental funds* statements tell how *general government* services were financed in the *short term* as well as what remains for future spending.
- *Proprietary fund* statements offer *short- and long-term* financial information about the activities the government operates *like businesses*.
- *Fiduciary fund* statements provide information about the financial relationships in which the District acts solely as a *trustee or agent* for the benefit of others, to whom the resources in question belong.



The financial statements also include notes that explain some of the **Summary** information in the financial statements and provide more detailed data. The statements are followed by a section of *required supplementary information* that further explains and supports the information in the financial statements. Figure A-1 shows how the required parts of this annual report are arranged and related to one another.

Figure A-2 summarizes the major features of the District's financial statements, including the portion of the District government they cover and the types of information they contain. The remainder of this overview section of management's discussion and analysis explains the structure and contents of each of the statements.

Figure A-2. Major Features of the District's Government-wide and Fund Financial Statements

Type of Statements	Fund Statements			
	Government-wide	Governmental Funds	Proprietary Funds	Fiduciary Funds
Scope	Entire Agency's government (except fiduciary funds) and the Agency's component units	The activities of the district that are not proprietary or fiduciary	Activities the district operates similar to private businesses: self insurance	Instances in which the district is the trustee or agent for someone else's resources
Required financial statements	• Statement of net position	• Balance sheet	• Statement of net position	• Statement of fiduciary net position
	• Statement of activities	• Statement of revenues, expenditures & changes in fund balances	• Statement of revenues, expenses and changes in fund net position • Statement of cash flows	• Statement of changes in fiduciary net position
Accounting basis and measurement focus	Accrual accounting and economic resources focus	Modified accrual accounting and current financial resources focus	Accrual accounting and economic resources focus	Accrual accounting and economic resources focus
Type of asset/liability information	All assets and liabilities, both financial and capital, short-term and long-term	Only assets expected to be used up and liabilities that come due during the year or soon thereafter; no capital assets included	All assets and liabilities, both financial and capital, and short-term and long-term	All assets and liabilities, both short-term and long-term; the Agency's funds do not currently contain capital assets, although they can
Type of inflow/outflow information	All revenues and expenses during year, regardless of when cash is received or paid	Revenues for which cash is received during or soon after the end of the year; expenditures when goods or services have been received and payment is due during the year or soon thereafter	All revenues and expenses during year, regardless of when cash is received or paid	All revenues and expenses during year, regardless of when cash is received or paid

Government-wide Statements

The government-wide statements report information about the District as a whole using accounting methods similar to those used by private-sector companies. The statement of net position includes all of the government's assets and liabilities. All of the current year's revenues and expenses are accounted for in the statement of activities regardless of when cash is received or paid.

The two government-wide statements report the District's net position and how it has changed. Net position—the difference between the District's assets and liabilities—is one way to measure the District's financial health or *position*.

- Over time, increases or decreases in the District's net position are an indicator of whether its financial health is improving or deteriorating, respectively.
- To assess the overall health of the District, one needs to consider additional non-financial factors such as changes in the District's tax base.

The government-wide financial statements of the District include the *Governmental activities*. Most of the District's basic services are included here, such as instruction, extracurricular activities, curriculum and staff development, health services and general administration. Property taxes and grants finance most of these activities.

Fund Financial Statements

The fund financial statements provide more detailed information about the District's most significant *funds*—not the District as a whole. Funds are accounting devices that the District uses to keep track of specific sources of funding and spending for particular purposes.

- Some funds are required by State law and by bond covenants.
- The Board of Trustees establishes other funds to control and manage money for particular purposes or to show that it is properly using certain taxes and grants.

The District has the following kinds of funds:

- *Governmental funds*—Most of the District's basic services are included in governmental funds, which focus on (1) how *cash and other financial assets* that can readily be converted to cash flow in and out and (2) the balances left at year-end that are available for spending. Consequently, the governmental fund statements provide a detailed *short-term* view that helps you determine whether there are more or fewer financial resources that can be spent in the near future to finance the District's programs. Because this information does not encompass the additional long-term focus of the government-wide statements, we provide additional information at the bottom of the governmental funds statement, or on the subsequent page, that explain the relationship (or differences) between them.
- *Proprietary funds*—Services for which the District charges customers a fee are generally reported in proprietary funds. Proprietary funds, like the government-wide statements, provide both long-term and short-term financial information.
- The District uses *internal service funds* to report activities that provide supplies and services for the District's other programs and activities.
- *Fiduciary funds*—The District is the trustee, or *fiduciary*, for certain funds. It is also responsible for other assets that—because of a trust arrangement—can be used only for the trust beneficiaries. The District is responsible for ensuring that the assets reported in these funds are used for their intended purposes. All of the District's fiduciary activities are reported in a separate statement of fiduciary net position and a statement of changes in fiduciary net position. These activities are excluded from the District's government-wide financial statements because the District cannot use these assets to finance its operations.

Non-major governmental funds include special revenue funds such as ESEA Title 1 Part A (for at-risk population); IDEA-B, Formula (special education); IDEA-B, Preschool (special education); National School Breakfast/Lunch Program (food service to students); and various other funds restricted for special purposes.

FINANCIAL ANALYSIS OF THE DISTRICT AS A WHOLE

Net Position (See Table A-1). The District's Governmental activity net position was \$5,611,663 at August 31, 2017. Overall, the District had a decrease of 23.7% in net position from prior year. District Administration has identified contributing factors for the decrease and will work toward increasing the net position. The District had minimal Business-type activities during the fiscal year.

Table A-1
Gilmer Independent School District's Net Position
(In dollars)

	Governmental Activities			% Change	Business-Type Activities			Total Activities			% Change
	<u>2017</u>	<u>2016</u>	<u>2015</u>	<u>2016-</u> <u>2017</u>	<u>2017</u>	<u>2016</u>	<u>2015</u>	<u>2017</u>	<u>2016</u>	<u>2015</u>	<u>2016-</u> <u>2017</u>
ASSETS:											
Current assets:											
Cash and Cash Equivalents	5,574,930	5,812,518	5,674,970	-4%	24,649	16,820	10,352	5,599,579	5,829,338	5,685,322	-4%
Property Taxes Receivable (Net)	1,501,261	1,429,124	1,434,108	5%	-	-	-	1,501,261	1,429,124	1,434,108	5%
Due from Other Governments	578,693	786,620	1,031,784	-26%	-	-	-	578,693	786,620	1,031,784	-26%
Other Receivables	507	551	3,311	-8%	-	-	-	507	551	3,311	-8%
Unrealized Expenses	69,001	58,827	58,245	17%	-	-	-	69,001	58,827	58,245	17%
Inventories	46,735	43,806	38,815	7%	-	-	-	46,735	43,806	38,815	7%
Total current assets	7,771,127	8,131,446	8,241,233	-4%	24,649	16,820	10,352	7,795,776	8,148,266	8,251,585	-4%
Noncurrent assets:											
Land	1,341,374	1,341,374	1,266,242	0%	-	-	-	1,341,374	1,341,374	1,266,242	0%
Buildings, Furniture and Equipment	45,177,968	44,904,201	44,805,561	1%	-	-	-	45,177,968	44,904,201	44,805,561	1%
Less Accumulated Depreciation	(25,733,619)	(24,493,755)	(23,330,670)	5%	-	-	-	(25,733,619)	(24,493,755)	(23,330,670)	5%
Total Noncurrent Assets	20,785,723	21,751,820	22,741,133	-4%	-	-	-	20,785,723	21,751,820	22,741,133	-4%
Total Assets	28,556,850	29,883,266	30,982,366	-4%	24,649	16,820	10,352	28,581,499	29,900,086	30,992,718	-4%
DEFERRED OUTFLOWS OF RESOURCES:											
Deferred Loss on Defeasance of Debt	881,116	946,795	1,012,474	-7%	-	-	-	881,116	946,795	1,012,474	-7%
Deferred Outflow Related to Pensions	2,092,707	2,124,589	598,066	-2%	-	-	-	2,092,707	2,124,589	598,066	-2%
Total Deferred Outflows of Resources	2,973,823	3,071,384	1,610,540	-3%	-	-	-	2,973,823	3,071,384	1,610,540	-3%
LIABILITIES:											
Current liabilities:											
Accounts Payable and Accrued Liabilities	1,223,694	1,191,890	1,116,787	3%	418	817	1,488	1,224,112	1,192,707	1,118,275	3%
Due to Other Government	471,945	-	-	0%	-	-	-	471,945	-	-	0%
Deferred Revenue	146,731	94,619	83,832	55%	5,490	1,890	-	152,221	96,509	83,832	58%
Total Current Liabilities	1,842,370	1,286,509	1,200,619	43%	5,908	2,707	1,488	1,848,278	1,289,216	1,202,107	43%
Long-term liabilities:											
Due Within One Year	1,178,562	1,091,095	1,010,291	8%	-	-	-	1,178,562	1,091,095	1,010,291	8%
Due in More than One Year	17,475,699	18,128,273	19,398,405	-4%	-	-	-	17,475,699	18,128,273	19,398,405	-4%
Net Pension Liability	5,126,756	4,742,024	2,495,645	8%	-	-	-	5,126,756	4,742,024	2,495,645	8%
Total Long Term Liabilities	23,781,017	23,961,392	22,904,341	-1%	-	-	-	23,781,017	23,961,392	22,904,341	-1%
Total Liabilities	25,623,387	25,247,901	24,104,960	1%	5,908	2,707	1,488	25,629,295	25,250,608	24,106,448	1%
DEFERRED INFLOWS OF RESOURCES:											
Deferred Inflow Related to Pensions	295,623	352,924	763,425	-16%	-	-	-	295,623	352,924	763,425	-16%
Total Deferred Inflows of Resources	295,623	352,924	763,425	-16%	-	-	-	295,623	352,924	763,425	-16%
NET POSITION:											
Net Investment in Capital Assets	3,396,570	3,562,106	3,648,628	-5%	-	-	-	3,396,570	3,562,106	3,648,628	-5%
Restricted for Other Purposes	394,970	494,710	550,040	-20%	-	-	-	394,970	494,710	550,040	-20%
Unrestricted	1,820,123	3,297,009	3,525,853	-45%	18,741	14,113	8,864	1,838,864	3,311,122	3,534,717	-44%
Total Net Position	5,611,663	7,353,825	7,724,521	-24%	18,741	14,113	8,864	5,630,404	7,367,938	7,733,385	-24%

The \$1,820,123 of unrestricted net position represents resources available to fund the governmental activity programs of the District during the next fiscal year.

Changes in net position (See Table A-2).

Governmental Activities - The District's total revenue for governmental activities was \$24,468,982, which included \$4,465,968 for services and operating grants and contributions, and \$20,003,014 in general revenues.

For fiscal year 2017, approximately 49% of the District's general revenue came from taxes, 49% from state aid, federal programs and specific grants, and the remaining 2% from investment earnings and miscellaneous local sources. The total expenses of all District governmental activity programs and services was \$26,211,149, with approximately 73% of these costs for instructional and student related services.

Governmental Activities

Table A-2
Changes in Gilmer Independent School District's Net Position
(In dollars)

	Governmental Activities			Business Activities			Total Activities	% Change	
	<u>2017</u>	<u>2016</u>	<u>2015</u>	<u>2017</u>	<u>2016</u>	<u>2015</u>	<u>2016</u>	<u>2015</u>	<u>2016-2017</u>
Program Revenues:									
Charges for Services	631,721	701,036	644,717	6,589	8,114	16,219	638,310	709,150	-10%
Operating Grants and Contributions	3,834,247	3,828,317	3,419,118	-	-	-	3,834,247	3,828,317	0%
General Revenues:									
Property Taxes	9,971,430	10,019,821	9,838,252	-	-	-	9,971,430	10,019,821	0%
State Aid – Formula	9,792,610	10,585,821	9,209,916	-	-	-	9,792,610	10,585,821	-7%
Investment Earnings	30,243	29,541	35,013	-	-	-	30,243	29,541	2%
Other	208,731	188,140	254,284	-	-	-	208,731	188,140	11%
Total Revenues	24,468,982	25,352,676	23,401,300	6,589	8,114	16,219	24,475,571	25,360,790	-3%
Program Expenses:									
Instruction	12,990,439	13,094,165	12,293,741	1,961	2,865	11,215	12,992,400	13,097,030	-1%
Instructional Resources and Media Services	654,738	630,381	567,490	-	-	-	654,738	630,381	4%
Curriculum Dev. and Instructional Staff Dev.	526,627	532,192	392,090	-	-	-	526,627	532,192	-1%
Instructional Leadership	103,365	132,257	127,791	-	-	-	103,365	132,257	-22%
School Leadership	1,360,708	1,335,619	1,173,749	-	-	-	1,360,708	1,335,619	2%
Guidance, Counseling, and Evaluation Services	577,596	559,221	590,040	-	-	-	577,596	559,221	3%
Health Services	298,432	304,075	280,449	-	-	-	298,432	304,075	-2%
Student Transportation	1,124,026	1,025,890	908,504	-	-	-	1,124,026	1,025,890	10%
Food Services	1,454,510	1,501,091	1,333,518	-	-	-	1,454,510	1,501,091	-3%
Curricular/Extracurricular Activities	1,922,286	1,856,576	1,883,495	-	-	-	1,922,286	1,856,576	4%
General Administration	713,909	669,848	593,770	-	-	-	713,909	669,848	7%
Plant Maintenance & Oper.	2,858,517	2,392,234	2,275,093	-	-	-	2,858,517	2,392,234	19%
Security & Monitoring Svcs.	158,031	178,256	159,148	-	-	-	158,031	178,256	-11%
Data Processing Services	126,979	224,979	128,751	-	-	-	126,979	224,979	-44%
Community Services	65,053	57,639	57,171	-	-	-	65,053	57,639	13%
Debt Service	485,578	488,816	510,840	-	-	-	485,578	488,816	-1%
Bond Issuance Costs and Fees	2,550	2,101	2,181	-	-	-	2,550	2,101	21%
Facilities Acquisition and Construction	-	500	-	-	-	-	-	500	-100%

Payments to Fiscal Agent/ Member Dist. – SSA	570,822	521,850	457,040	-	-	-	570,822	521,850	457,040	9%
Other Intergovernmental Charges	216,983	215,682	204,046	-	-	-	216,983	215,682	204,046	1%
Total Expenses	26,211,149	25,723,372	23,938,907	1,961	2,865	11,215	26,213,110	25,726,237	23,950,122	2%
Net Position (NB) - Beginning	7,353,830	7,724,521	11,089,735	14,113	8,864	3,860	7,367,943	7,733,385	11,093,595	-5%
Adjustment to NB -Beginning	-	-	(2,827,576)	-	-	-	-	-	(2,827,576)	0%
Excess Before Other Resources, Uses & Transfers	(1,742,167)	(370,696)	(537,638)	4,628	5,249	5,004	(1,737,539)	(365,447)	(532,634)	375%
Net Position (NE) - Ending	5,611,663	7,353,825	7,724,521	18,741	14,113	8,864	5,630,404	7,367,938	7,733,385	-24%
Change in Net Position (CN)	(1,742,167)	(370,696)	(537,638)	4,628	5,249	5,004	(1,737,539)	(365,447)	(532,634)	375%

Table A-3 presents the cost of some of the District's largest functions as well as each function's net cost (total cost less fees generated by the activities and intergovernmental aid). The net cost reflects what was funded by state revenues as well as local tax dollars.

- The cost of all *governmental* activities this year was \$26,211,149
- The amount that District taxpayers funded for these activities through property taxes was \$9,971,430
- The amount paid by charges for services was \$631,721
- The remaining costs were funded by state aid, federal grants and contributions in the amount of \$13,626,857 or by interest and other miscellaneous revenues of \$238,974.

Table A-3
Net Cost of Selected District Functions
(In dollars)

	Total Cost of Services				Net Cost of Services			
	% Change				% Change			
	<u>2017</u>	<u>2016</u>	<u>2015</u>	<u>2016-2017</u>	<u>2017</u>	<u>2016</u>	<u>2015</u>	<u>2016-2017</u>
Instruction	12,990,439	13,094,165	12,293,741	-1%	10,800,429	10,977,592	10,428,083	-2%
School Administration	1,360,708	1,335,619	1,173,749	2%	1,272,936	1,225,652	1,108,202	4%
Plant Maintenance & Operations	2,858,517	2,392,234	2,275,093	19%	2,769,792	2,291,261	2,195,712	21%
Debt Service – Interest/ Fiscal Charges	488,128	490,917	513,021	-1%	443,250	449,917	513,021	-1%

FINANCIAL ANALYSIS OF THE DISTRICT'S FUNDS

Total revenues from governmental fund types totaled \$24,207,453, a decrease of \$646,286 from the previous year. General fund revenue decreased \$928,962 while non-major governmental funds revenue increased \$282,676. The bulk of the decrease in total revenue from the prior year is due to a combination of decreases in local property tax collections, state aid due to enrollment and attendance declines, and revenue attributed to the number of attendance days in August 2017.

General Operating Fund Budgetary Highlights

During the course of the year, the District, with approval by the Board of Trustees, amended the general operating budget on a regular basis to reflect changing needs within the District as well as to budget additional revenue received from various sources throughout the year. Actual revenue and expenditures for the fiscal year were \$409,037 above final budgeted amounts.

The District invested \$273,767 in capital assets with the purchase of two buses, replacement of the district fuel management system and other equipment. The District also invested \$128,782 for facility maintenance and improvements to District property. The major facility maintenance and improvements were the replacement of aged HVAC units, concrete work to correct a safety issue, asbestos abatement and demolition of property no longer being used. The District also invested \$387,925 to implement an Energy Savings Project. In addition to capital asset and facility improvements, the District invested \$90,000 in small equipment purchases. These included technology instructional devices, band instruments, and equipment for the transportation, custodial and athletic departments. All capital asset acquisitions, facility maintenance, and property improvements were funded by available District funds.

The general operating fund balance decreased by \$943,921 for an ending balance of \$3,636,458 as of August 31, 2017.

CAPITAL ASSETS AND DEBT ADMINISTRATION

Capital Assets

At the end of fiscal year 2017, the District had invested \$46,519,342 in a broad range of capital assets, including land, equipment, buildings, and vehicles. (See Table A-4.) This amount represents a net increase (including additions and deductions) of \$273,767 over the previous fiscal year.

Table A-4
District's Capital Assets
(In dollars)

	<u>2017</u>	<u>2016</u>	<u>2015</u>	Total Percentage Change <u>2016-2017</u>
Land	1,341,374	1,341,374	1,266,242	0%
Buildings and improvements	40,713,458	40,679,133	40,640,811	0%
Equipment	1,769,831	1,719,689	1,717,010	3%
Vehicles	2,694,679	2,505,379	2,447,740	8%
Totals at historical cost	<u>46,519,342</u>	<u>46,245,575</u>	<u>46,071,803</u>	1%
Total accumulated depreciation	<u>(25,733,619)</u>	<u>(24,493,755)</u>	<u>(23,330,670)</u>	5%
Net capital assets	<u>20,785,723</u>	<u>21,751,820</u>	<u>22,741,133</u>	-4%

More detailed information about the District's capital assets is presented in Note D to the financial statements.

Long Term Debt

At year-end the District had \$17,763,669 in outstanding debt as shown in Table A-5. More detailed information about the District's debt is presented in Note F to the financial statements.

Table A-5
District's Long Term Debt
(In dollars)

	Governmental Activities			Total Percentage Change 2016-2017
	<u>2017</u>	<u>2016</u>	<u>2015</u>	<u>2016-2017</u>
Bonds Payable	15,190,000	15,910,000	16,555,000	-5%
Notes Payable	2,573,669	2,227,707	2,510,139	16%
Capital Leases	-	82,859	165,718	-100%
Total Debt	<u>17,763,669</u>	<u>18,220,566</u>	<u>19,230,857</u>	<u>-3%</u>

ECONOMIC FACTORS AND NEXT YEAR'S BUDGETS AND RATES

- Appraised property value used for the 2018 budget preparation is up \$ 55,185,360 which is 5% more than the prior year.
- General operating funds budgeted per student increased in the 2018 budget from \$8,410 to \$8,694.
- The District's 2018 refined average daily attendance was anticipated to increase over the final 2017 refined average daily attendance from 2243 to 2275; however, the District budgeted at the 2243 ADA level and intends to replenish fund balance with excess revenue received for enrollment increases.

These indicators were taken into account when adopting the general fund budget for 2018. Amounts available for appropriation in the general fund are \$21,420,858, an increase of \$676,572 from final revenues for 2017. The District adopted a balanced budget for the 2018 school year. District staff received a pay increase of approximately 3% of the midpoint for 2018. The District continues to monitor staffing needs and seek efficient operating procedures in order to maximize the available dollars spent directly on student instruction.

The FY2018 adopted general fund budget expenditures are expected to decrease from the FY2017 amended budget from \$21,511,999 to \$20,420,858.

The District expects to receive approximately \$660,000 in additional revenue in FY2018 due to increased enrollment and attendance projections (\$500,000) and as a result of a property tax audit of the 2015 tax year (\$160,000). This revenue was not included in the FY2018 budget and will be used to increase the District fund balance.

If these estimates are realized, the District's budgetary general fund balance is expected to increase for the 2017-2018 school year.

CONTACTING THE DISTRICT'S FINANCIAL MANAGEMENT

This financial report is designed to provide our citizens, taxpayers, stakeholders, and creditors with a general overview of the District's finances and to demonstrate the District's accountability for the money it receives. If you have questions about this report or need additional financial information, please feel free to contact the District's Business Office.

This page is left blank intentionally.

Basic Financial Statements

This page is left blank intentionally.

GILMER INDEPENDENT SCHOOL DISTRICT
STATEMENT OF NET POSITION
AUGUST 31, 2017

Data Control Codes		1	2	3
		Governmental Activities	Business-type Activities	Total
ASSETS:				
1110	Cash and Cash Equivalents	\$ 3,422,012	\$ 24,649	\$ 3,446,661
1120	Current Investments	2,152,918	--	2,152,918
1225	Property Taxes Receivable (Net)	1,501,261	--	1,501,261
1240	Due from Other Governments	578,693	--	578,693
1250	Accrued Interest	507	--	507
1300	Inventories	46,735	--	46,735
1410	Unrealized Expenses	69,001	--	69,001
Capital Assets:				
1510	Land	1,341,374	--	1,341,374
1520	Buildings and Improvements, Net	18,445,717	--	18,445,717
1530	Furniture and Equipment, Net	998,632	--	998,632
1000	Total Assets	<u>28,556,850</u>	<u>24,649</u>	<u>28,581,499</u>
DEFERRED OUTFLOWS OF RESOURCES:				
	Deferred Outflow Related to Loss on Defeasance of Debt	881,116	--	881,116
1705	Deferred Outflow Related to Pensions	<u>2,092,707</u>	<u>--</u>	<u>2,092,707</u>
1700	Total Deferred Outflows of Resources	<u>2,973,823</u>	<u>--</u>	<u>2,973,823</u>
LIABILITIES:				
2110	Accounts Payable	337,864	418	338,282
2140	Interest Payable	28,775	--	28,775
2165	Accrued Liabilities	857,055	--	857,055
2180	Due to Other Governments	471,945	--	471,945
2300	Unearned Revenue	146,731	5,490	152,221
Noncurrent Liabilities:				
2501	Due Within One Year	1,178,562	--	1,178,562
2502	Due in More Than One Year	17,475,699	--	17,475,699
2540	Net Pension Liability	<u>5,126,756</u>	<u>--</u>	<u>5,126,756</u>
2000	Total Liabilities	<u>25,623,387</u>	<u>5,908</u>	<u>25,629,295</u>
DEFERRED INFLOWS OF RESOURCES:				
2605	Deferred Inflow Related to Pensions	<u>295,623</u>	<u>--</u>	<u>295,623</u>
2600	Total Deferred Inflows of Resources	<u>295,623</u>	<u>--</u>	<u>295,623</u>
NET POSITION:				
3200	Net Investment in Capital Assets	3,396,570	--	3,396,570
Restricted For:				
3820	State and Federal Programs	302,703	--	302,703
3850	Debt Service	92,267	--	92,267
3900	Unrestricted	<u>1,820,123</u>	<u>18,741</u>	<u>1,838,864</u>
3000	Total Net Position	<u>\$ 5,611,663</u>	<u>\$ 18,741</u>	<u>\$ 5,630,404</u>

The accompanying notes are an integral part of this statement.

GILMER INDEPENDENT SCHOOL DISTRICT

STATEMENT OF ACTIVITIES

FOR THE YEAR ENDED AUGUST 31, 2017

Data Control Codes	Functions/Programs	1 Expenses	3 Charges for Services	4 Program Revenues Operating Grants and Contributions
	Governmental Activities:			
11	Instruction	\$ 12,990,439	\$ 317,913	\$ 1,872,097
12	Instructional Resources and Media Services	654,738	--	42,942
13	Curriculum and Staff Development	526,627	--	156,377
21	Instructional Leadership	103,365	--	3,960
23	School Leadership	1,360,708	--	87,772
31	Guidance, Counseling, & Evaluation Services	577,596	--	173,699
33	Health Services	298,432	--	23,039
34	Student Transportation	1,124,026	--	62,066
35	Food Service	1,454,510	201,630	1,175,952
36	Cocurricular/Extracurricular Activities	1,922,286	104,859	58,073
41	General Administration	713,909	--	32,279
51	Facilities Maintenance and Operations	2,858,517	7,319	81,406
52	Security and Monitoring Services	158,031	--	--
53	Data Processing Services	126,979	--	5,048
61	Community Services	65,053	--	14,659
72	Interest on Long-term Debt	485,578	--	44,878
73	Bond Issuance Costs and Fees	2,550	--	--
93	Alternative Education/Special Education Services	570,822	--	--
99	Property Appraisal Services	216,983	--	--
TG	Total Governmental Activities	<u>26,211,149</u>	<u>631,721</u>	<u>3,834,247</u>
	Business-type Activities:			
01	Stadium Enterprise	--	30	--
02	District Enterprise	1,961	6,559	--
TB	Total Business-type Activities	<u>1,961</u>	<u>6,589</u>	<u>--</u>
TP	Total Primary Government	<u>\$ 26,213,110</u>	<u>\$ 638,310</u>	<u>\$ 3,834,247</u>
	General Revenues:			
MT	Property Taxes, Levied for General Purposes			
DT	Property Taxes, Levied for Debt Service			
IE	Investment Earnings			
GC	Grants and Contributions Not Restricted to Specific Programs			
MI	Miscellaneous			
TR	Total General Revenues			
CN	Change in Net Position			
NB	Net Position - Beginning			
NE	Net Position - Ending			

The accompanying notes are an integral part of this statement.

6

7

8

Net (Expense) Revenue and Changes in Net Position

<u>Governmental Activities</u>	<u>Business-type Activities</u>	<u>Total</u>
\$ (10,800,429)		\$ (10,800,429)
(611,796)		(611,796)
(370,250)		(370,250)
(99,405)		(99,405)
(1,272,936)		(1,272,936)
(403,897)		(403,897)
(275,393)		(275,393)
(1,061,960)		(1,061,960)
(76,928)		(76,928)
(1,759,354)		(1,759,354)
(681,630)		(681,630)
(2,769,792)		(2,769,792)
(158,031)		(158,031)
(121,931)		(121,931)
(50,394)		(50,394)
(440,700)		(440,700)
(2,550)		(2,550)
(570,822)		(570,822)
(216,983)		(216,983)
<u>(21,745,181)</u>		<u>(21,745,181)</u>
--	\$ 30	30
--	4,598	4,598
--	4,628	4,628
<u>(21,745,181)</u>	<u>4,628</u>	<u>(21,740,553)</u>
9,561,271	--	9,561,271
410,159	--	410,159
30,243	--	30,243
9,792,610	--	9,792,610
208,731	--	208,731
<u>20,003,014</u>	<u>--</u>	<u>20,003,014</u>
(1,742,167)	4,628	(1,737,539)
7,353,830	14,113	7,367,943
<u>\$ 5,611,663</u>	<u>\$ 18,741</u>	<u>\$ 5,630,404</u>

GILMER INDEPENDENT SCHOOL DISTRICT

BALANCE SHEET - GOVERNMENTAL FUNDS

AUGUST 31, 2017

Data Control Codes	10 General Fund	Other Governmental Funds	98 Total Governmental Funds
ASSETS:			
1110 Cash and Cash Equivalents	\$ 2,599,411	\$ 370,276	\$ 2,969,687
1120 Current Investments	2,151,998	920	2,152,918
1225 Taxes Receivable, Net	1,397,191	104,070	1,501,261
1240 Due from Other Governments	262,560	316,133	578,693
1250 Accrued Interest	507	--	507
1260 Due from Other Funds	98,011	--	98,011
1300 Inventories	3,570	43,165	46,735
1000 Total Assets	<u>6,513,248</u>	<u>834,564</u>	<u>7,347,812</u>
LIABILITIES:			
Current Liabilities:			
2110 Accounts Payable	\$ 146,889	\$ 106,367	\$ 253,256
2150 Payroll Deductions & Withholdings	7,156	--	7,156
2160 Accrued Wages Payable	790,813	59,086	849,899
2170 Due to Other Funds	--	98,011	98,011
2180 Due to Other Governments	471,945	--	471,945
2300 Unearned Revenue	62,796	83,935	146,731
2000 Total Liabilities	<u>1,479,599</u>	<u>347,399</u>	<u>1,826,998</u>
DEFERRED INFLOWS OF RESOURCES:			
Deferred Property Taxes	1,397,191	104,070	1,501,261
2600 Total Deferred Inflows of Resources	<u>1,397,191</u>	<u>104,070</u>	<u>1,501,261</u>
FUND BALANCES:			
Nonspendable Fund Balances:			
3410 Inventories	3,570	19,269	22,839
Restricted Fund Balances:			
3450 Federal/State Funds Grant Restrictions	--	283,443	283,443
3480 Retirement of Long-Term Debt	--	16,972	16,972
Committed Fund Balances:			
3545 Other Committed Fund Balance	--	63,411	63,411
Assigned Fund Balances:			
3590 Other Assigned Fund Balance	30,000	--	30,000
3600 Unassigned	3,602,888	--	3,602,888
3000 Total Fund Balances	<u>3,636,458</u>	<u>383,095</u>	<u>4,019,553</u>
Total Liabilities, Deferred Inflow of Resources and Fund Balances	<u>\$ 6,513,248</u>	<u>\$ 834,564</u>	<u>\$ 7,347,812</u>

The accompanying notes are an integral part of this statement.

GILMER INDEPENDENT SCHOOL DISTRICT

RECONCILIATION OF THE GOVERNMENTAL FUNDS BALANCE SHEET
TO THE STATEMENT OF NET POSITION
AUGUST 31, 2017

Total fund balances - governmental funds balance sheet	\$ 4,019,553
Amounts reported for governmental activities in the Statement of Net Position are different because:	
Capital assets used in governmental activities are not reported in the funds.	20,785,723
Property taxes receivable unavailable to pay for current period expenditures are deferred in the funds.	1,501,261
The assets and liabilities of internal service funds are included in governmental activities in the SNP.	367,717
Payables for bond principal which are not due in the current period are not reported in the funds.	(15,190,000)
Payables for bond interest which are not due in the current period are not reported in the funds.	(28,775)
Payables for notes which are not due in the current period are not reported in the funds.	(2,573,669)
Premium on issuance of bonds is not reported in the funds.	(890,592)
Prepaid insurance is not reported in the funds.	69,001
The deferred loss on defeasance of debt is not reported in the funds.	881,116
Recognition of the District's proportionate share of the net pension liability is not reported in the funds.	(5,126,756)
Deferred Resource Inflows related to the pension plan are not reported in the funds.	(295,623)
Deferred Resource Outflows related to the pension plan are not reported in the funds.	2,092,707
Net position of governmental activities - Statement of Net Position	<u>\$ 5,611,663</u>

The accompanying notes are an integral part of this statement.

GILMER INDEPENDENT SCHOOL DISTRICTSTATEMENT OF REVENUES, EXPENDITURES, AND CHANGES
IN FUND BALANCES - GOVERNMENTAL FUNDS
FOR THE YEAR ENDED AUGUST 31, 2017

Data Control Codes	10 General Fund	Other Governmental Funds	98 Total Governmental Funds
REVENUES:			
5700 Local and Intermediate Sources	\$ 9,954,936	\$ 815,052	\$ 10,769,988
5800 State Program Revenues	10,741,104	424,958	11,166,062
5900 Federal Program Revenues	48,246	2,223,157	2,271,403
5020 Total Revenues	<u>20,744,286</u>	<u>3,463,167</u>	<u>24,207,453</u>
EXPENDITURES:			
Current:			
0011 Instruction	10,691,449	1,290,288	11,981,737
0012 Instructional Resources and Media Services	618,141	--	618,141
0013 Curriculum and Staff Development	378,271	136,575	514,846
0021 Instructional Leadership	101,302	--	101,302
0023 School Leadership	1,309,438	5,171	1,314,609
0031 Guidance, Counseling, & Evaluation Services	396,697	153,574	550,271
0033 Health Services	288,141	--	288,141
0034 Student Transportation	1,197,676	--	1,197,676
0035 Food Service	--	1,387,325	1,387,325
0036 Cocurricular/Extracurricular Activities	1,580,936	--	1,580,936
0041 General Administration	696,681	--	696,681
0051 Facilities Maintenance and Operations	2,821,382	20,881	2,842,263
0052 Security and Monitoring Services	152,088	--	152,088
0053 Data Processing Services	123,704	--	123,704
0061 Community Services	53,350	10,303	63,653
0071 Principal on Long-term Debt	326,211	764,878	1,091,089
0072 Interest on Long-term Debt	49,583	474,163	523,746
0073 Bond Issuance Costs and Fees	600	1,950	2,550
0093 Alternative Education/Special Education Services	570,822	--	570,822
0099 Property Appraisal Services	216,983	--	216,983
6030 Total Expenditures	<u>21,573,455</u>	<u>4,245,108</u>	<u>25,818,563</u>
1100 Excess (Deficiency) of Revenues Over (Under)			
1100 Expenditures	<u>(829,169)</u>	<u>(781,941)</u>	<u>(1,611,110)</u>
Other Financing Sources and (Uses):			
7914 Issuance of Non-Current Debt	634,192	--	634,192
7915 Transfers In	6,056	755,000	761,056
8911 Transfers Out	(755,000)	(6,056)	(761,056)
7080 Total Other Financing Sources and (Uses)	<u>(114,752)</u>	<u>748,944</u>	<u>634,192</u>
1200 Net Change in Fund Balances	<u>(943,921)</u>	<u>(32,997)</u>	<u>(976,918)</u>
0100 Fund Balances - Beginning	4,580,379	416,092	4,996,471
3000 Fund Balances - Ending	<u>\$ 3,636,458</u>	<u>\$ 383,095</u>	<u>\$ 4,019,553</u>

The accompanying notes are an integral part of this statement.

GILMER INDEPENDENT SCHOOL DISTRICT

RECONCILIATION OF THE STATEMENT OF REVENUES, EXPENDITURES,
AND CHANGES IN FUND BALANCES OF GOVERNMENTAL FUNDS
TO THE STATEMENT OF ACTIVITIES
FOR THE YEAR ENDED AUGUST 31, 2017

Net change in fund balances - total governmental funds	\$ (976,918)
Amounts reported for governmental activities in the Statement of Activities ("SOA") are different because:	
Capital outlays are not reported as expenses in the SOA.	273,767
The depreciation of capital assets used in governmental activities is not reported in the funds.	(1,239,864)
Certain property tax revenues are deferred in the funds. This is the change in these amounts this year.	72,136
Repayment of bond principal is an expenditure in the funds but is not an expense in the SOA.	720,000
Repayment of capital lease principal is an expenditure in the funds but is not an expense in the SOA.	82,859
Repayment of loan principal is an expenditure in the funds but is not an expense in the SOA.	288,230
(Increase) decrease in accrued interest from beginning of period to end of period.	(4,362)
The net revenue (expense) of internal service funds is reported with governmental activities.	(17,214)
The loss on defeasance of debt is not recorded in the funds.	(65,679)
Proceeds of notes do not provide revenue in the SOA, but are reported as current resources in the funds.	(634,192)
(Increase) decrease in prepaid insurance from beginning of period to end of period.	10,174
Bond premiums are reported in the funds but not in the SOA.	108,209
Pension contributions made after the measurement date but in current FY were de-expended and reduced NPL.	453,700
The District's share of the unrecognized deferred inflows and outflows for the pension plan was amortized.	3,633
Pension expense relating to GASB 68 is recorded in the SOA but not in the funds.	(816,646)
Change in net position of governmental activities - Statement of Activities	\$ <u>(1,742,167)</u>

The accompanying notes are an integral part of this statement.

GILMER INDEPENDENT SCHOOL DISTRICT

STATEMENT OF NET POSITION

PROPRIETARY FUNDS

AUGUST 31, 2017

		Nonmajor Enterprise Funds		Nonmajor Internal Service Fund	
Data Control Codes				Insurance Fund	
ASSETS:					
Current Assets:					
1110	Cash and Cash Equivalents	\$	24,649	\$	452,325
	Total Current Assets		24,649		452,325
1000	Total Assets		24,649		452,325
LIABILITIES:					
Current Liabilities:					
2110	Accounts Payable	\$	418	\$	84,608
2300	Unearned Revenues		5,490		--
	Total Current Liabilities		5,908		84,608
2000	Total Liabilities		5,908		84,608
NET POSITION:					
3900	Unrestricted		18,741		367,717
3000	Total Net Position	\$	18,741	\$	367,717

The accompanying notes are an integral part of this statement.

GILMER INDEPENDENT SCHOOL DISTRICT

STATEMENT OF REVENUES, EXPENSES, AND CHANGES

IN FUND NET POSITION - PROPRIETARY FUNDS

FOR THE YEAR ENDED AUGUST 31, 2017

Data Control Codes		Nonmajor Enterprise Funds	Nonmajor Internal Service Fund
			Insurance Fund
	OPERATING REVENUES:		
5700	Local and Intermediate Sources	\$ 6,589	\$ 47,665
5020	Total Revenues	<u>6,589</u>	<u>47,665</u>
	OPERATING EXPENSES:		
6400	Other Operating Costs	1,961	64,879
6030	Total Expenses	<u>1,961</u>	<u>64,879</u>
1300	Change in Net Position	4,628	(17,214)
0100	Total Net Position - Beginning	14,113	384,931
3300	Total Net Position - Ending	<u>\$ 18,741</u>	<u>\$ 367,717</u>

The accompanying notes are an integral part of this statement.

GILMER INDEPENDENT SCHOOL DISTRICT

STATEMENT OF CASH FLOWS

PROPRIETARY FUNDS

FOR THE YEAR ENDED AUGUST 31, 2017

	Nonmajor Enterprise Funds	Nonmajor Internal Service Funds
Cash Flows from Operating Activities:		
Cash Received from Customers	\$ 10,189	\$ --
Cash Receipts (Payments) for Quasi-external Operating Transactions with Other Funds	--	47,635
Cash Payments to Other Suppliers for Goods and Services	(2,360)	(43,374)
Net Cash Provided (Used) by Operating Activities	<u>7,829</u>	<u>4,261</u>
Cash Flows from Non-capital Financing Activities:		
Transfers From (To) Other Funds	--	--
Net Cash Provided (Used) by Non-capital Financing Activities	<u>--</u>	<u>--</u>
Cash Flows from Capital and Related Financing Activities:		
Contributed Capital	--	--
Net Cash Provided (Used) for Capital & Related Financing Activities	<u>--</u>	<u>--</u>
Cash Flows from Investing Activities:		
Interest and Dividends on Investments	--	30
Net Cash Provided (Used) for Investing Activities	<u>--</u>	<u>30</u>
Net Increase (Decrease) in Cash and Cash Equivalents	7,829	4,291
Cash and Cash Equivalents at Beginning of Year	16,820	448,034
Cash and Cash Equivalents at End of Year	<u>\$ 24,649</u>	<u>\$ 452,325</u>
Reconciliation of Operating Income to Net Cash Provided by Operating Activities:		
Operating Income (Loss)	\$ 4,628	\$ (17,214)
Adjustments to Reconcile Operating Income to Net Cash		
Provided by Operating Activities		
Investment Income	--	(30)
Change in Assets and Liabilities:		
Increase (Decrease) in Accounts Payable	(399)	21,505
Increase (Decrease) in Unearned Revenue	3,600	--
Total Adjustments	<u>3,201</u>	<u>21,475</u>
Net Cash Provided (Used) by Operating Activities	<u>\$ 7,829</u>	<u>\$ 4,261</u>

The accompanying notes are an integral part of this statement.

GILMER INDEPENDENT SCHOOL DISTRICT

STATEMENT OF FIDUCIARY NET POSITION

FIDUCIARY FUNDS

AUGUST 31, 2017

			Agency Funds
Data Control Codes		Private-purpose Trust Funds	Student Activity
ASSETS:			
1110	Cash and Cash Equivalents	\$ 122,765	\$ 64,101
1250	Accrued Interest	10	--
1800	Restricted Assets	506,987	--
1000	Total Assets	<u>629,762</u>	<u>64,101</u>
LIABILITIES:			
Current Liabilities:			
2190	Due to Student Groups	\$ --	\$ 64,101
2000	Total Liabilities	<u>--</u>	<u>64,101</u>
NET POSITION:			
3800	Held in Trust	629,762	--
3000	Total Net Position	<u>\$ 629,762</u>	<u>\$ --</u>

The accompanying notes are an integral part of this statement.

GILMER INDEPENDENT SCHOOL DISTRICT
 STATEMENT OF CHANGES IN FIDUCIARY NET POSITION
 FIDUCIARY FUNDS
 FOR THE YEAR ENDED AUGUST 31, 2017

	Private-Purpose Trust Funds
Additions:	
Gifts and Bequests	\$ 14,000
Net Increase in Fair Value of Investments	73,159
Total Additions	<u>87,159</u>
Deductions:	
Scholarship Awards	<u>18,550</u>
Total Deductions	<u>18,550</u>
Change in Net Position	68,609
Net Position-Beginning of the Year	561,153
Net Position-End of the Year	<u><u>\$ 629,762</u></u>

The accompanying notes are an integral part of this statement.

GILMER INDEPENDENT SCHOOL DISTRICT
NOTES TO THE FINANCIAL STATEMENTS
FOR THE YEAR ENDED AUGUST 31, 2017

A. Summary of Significant Accounting Policies

The basic financial statements of Gilmer Independent School District (the "District") have been prepared in conformity with accounting principles generally accepted in the United States of America ("GAAP") applicable to governmental units in conjunction with the Texas Education Agency's Financial Accountability System Resource Guide ("Resource Guide"). The Governmental Accounting Standards Board ("GASB") is the accepted standard setting body for establishing governmental accounting and financial reporting principles.

1. Reporting Entity

The Board of School Trustees ("Board"), a seven-member group, has governance responsibilities over all activities related to public elementary and secondary education within the jurisdiction of the District. The Board is elected by the public and has the exclusive power and duty to govern and oversee the management of the public schools of the District. All powers and duties not specifically delegated by statute to the Texas Education Agency ("TEA") or to the State Board of Education are reserved for the Board, and the TEA may not substitute its judgment for the lawful exercise of those powers and duties by the Board. The District receives funding from local, state and federal government sources and must comply with the requirements of those funding entities. However, the District is not included in any other governmental reporting entity and there are no component units included within the District's reporting entity.

2. Basis of Presentation, Basis of Accounting

a. Basis of Presentation

Government-wide Financial Statements: The statement of net position and the statement of activities include the financial activities of the overall government, except for fiduciary activities. Eliminations have been made to minimize the double-counting of internal activities. These statements distinguish between the governmental and business-type activities of the District. Governmental activities generally are financed through taxes, intergovernmental revenues, and other nonexchange transactions. Business-type activities are financed in whole or in part by fees charged to external parties.

The statement of activities presents a comparison between direct expenses and program revenues for the different business-type activities of the District and for each function of the District's governmental activities. Direct expenses are those that are specifically associated with a program or function and, therefore, are clearly identifiable to a particular function. The District does not allocate indirect expenses in the statement of activities. Program revenues include (a) fees, fines, and charges paid by the recipients of goods or services offered by the programs and (b) grants and contributions that are restricted to meeting the operational or capital requirements of a particular program. Revenues that are not classified as program revenues, including all taxes, are presented as general revenues.

Fund Financial Statements: The fund financial statements provide information about the District's funds, with separate statements presented for each fund category. The emphasis of fund financial statements is on major governmental and enterprise funds, each displayed in a separate column. All remaining governmental and enterprise funds are aggregated and reported as nonmajor funds.

Proprietary fund operating revenues, such as charges for services, result from exchange transactions associated with the principal activity of the fund. Exchange transactions are those in which each party receives and gives up essentially equal values. Nonoperating revenues, such as subsidies and investment earnings, result from nonexchange transactions or ancillary activities.

The District reports the following major governmental funds:

General Fund: This is the District's primary operating fund. It accounts for all financial resources of the District except those required to be accounted for in another fund.

GILMER INDEPENDENT SCHOOL DISTRICT
NOTES TO THE FINANCIAL STATEMENTS
FOR THE YEAR ENDED AUGUST 31, 2017

In addition, the District reports the following fund types:

Internal Service Funds: The District utilizes an internal service fund to account for its workers compensation pool.

Enterprise Funds: These funds are used to account for special projects approved by District staff.

Private-Purpose Trust Funds: These funds are used to report scholarship funds administered by the District.

Agency Funds: These funds are used to report student activity funds held in a purely custodial capacity (assets equal liabilities).

Fiduciary funds are reported in the fiduciary fund financial statements. However, because their assets are held in a trustee or agent capacity and are therefore not available to support District programs, these funds are not included in the government-wide statements.

b. **Measurement Focus, Basis of Accounting**

Government-wide, Proprietary, and Fiduciary Fund Financial Statements: These financial statements are reported using the economic resources measurement focus. The government-wide and proprietary fund financial statements are reported using the accrual basis of accounting. Revenues are recorded when earned and expenses are recorded at the time liabilities are incurred, regardless of when the related cash flows take place. Nonexchange transactions, in which the District gives (or receives) value without directly receiving (or giving) equal value in exchange, include property taxes, grants, entitlements, and donations. On an accrual basis, revenue from property taxes is recognized in the fiscal year for which the taxes are levied. Revenue from grants, entitlements, and donations is recognized in the fiscal year in which all eligibility requirements have been satisfied.

Governmental Fund Financial Statements: Governmental funds are reported using the current financial resources measurement focus and the modified accrual basis of accounting. Under this method, revenues are recognized when measurable and available. The District does not consider revenues collected more than sixty days after its year-end to be available in the current period. Revenues from local sources consist primarily of property taxes. Property tax revenues and revenues received from the State are recognized under the susceptible-to-accrual concept. Miscellaneous revenues are recorded as revenue when received in cash because they are generally not measurable until actually received. Investment earnings are recorded as earned, since they are both measurable and available. Expenditures are recorded when the related fund liability is incurred, except for principal and interest on general long-term debt, claims and judgments, and compensated absences, which are recognized as expenditures to the extent they have matured. General capital asset acquisitions are reported as expenditures in governmental funds. Proceeds of general long-term debt and acquisitions under capital leases are reported as other financing sources.

3. **Financial Statement Amounts**

a. **Cash and Cash Equivalents**

For purposes of the statement of cash flows, highly liquid investments are considered to be cash equivalents if they have a maturity of three months or less when purchased.

b. **Property Taxes**

Property taxes are levied by October 1 on the assessed value listed as of the prior January 1 for all real and business personal property in conformity with Subtitle E, Texas Property Tax Code. Taxes are due on receipt of the tax bill and are delinquent if not paid before February 1 of the year following the year in which imposed. On January 1 of each year, a tax lien attaches to property to secure the payment of all taxes, penalties, and interest ultimately imposed. Property tax revenues are considered available

GILMER INDEPENDENT SCHOOL DISTRICT
NOTES TO THE FINANCIAL STATEMENTS
FOR THE YEAR ENDED AUGUST 31, 2017

when they become due or past due and receivable within the current period.

Allowances for uncollectible tax receivables within the General and Debt Service Funds are based upon historical experience in collecting property taxes. Uncollectible personal property taxes are periodically reviewed and written off, but the District is prohibited from writing off real property taxes without specific statutory authority from the Texas Legislature. The allowance for uncollectible taxes at August 31, 2017 is \$643,397.

c. Inventories and Prepaid Items

Inventories of supplies on the balance sheet are stated at cost, while inventories of food commodities are recorded at market values supplied by the Texas Department of Agriculture. Inventory items are recorded as expenditures when they are consumed. Supplies are used for almost all functions of activity, while food commodities are used only in the food service program. Although commodities are received at no cost, their fair market value is supplied by the Texas Department of Agriculture and recorded as inventory and unearned revenue when received. When requisitioned, inventory and unearned revenue are relieved, expenditures are charged, and revenue is recognized for an equal amount. Inventories also include instructional supplies.

Certain payments to vendors reflect costs applicable to future accounting periods and are recorded as prepaid items.

d. Capital Assets

Purchased or constructed capital assets are reported at cost or estimated historical cost. Contributed assets are recorded at the acquisition value as of the date received. The cost of normal maintenance and repairs that do not add to the value of the asset or materially extend assets' lives are not capitalized. A capitalization threshold of \$5,000 is used.

Capital assets are being depreciated using the straight-line method over the following estimated useful lives:

<u>Asset Class</u>	<u>Estimated Useful Lives</u>
Buildings	30
Building Improvements	20
Vehicles	10
Furniture & Equipment	5-10

e. Deferred Outflows and Inflows of Resources

In addition to assets, the statements of financial position (the government-wide and proprietary Statements of Net Position and governmental funds balance sheet) will sometimes report a separate section for deferred outflows of resources. This separate financial statement element, deferred outflows of resources, represents a consumption of net position and/or fund balance that applies to one or more future periods and so will not be recognized as an outflow of resources (expense/expenditure) until then.

In addition to liabilities, the statements of financial position will sometimes report a separate section for deferred inflows of resources. This separate financial statement element, deferred inflows of resources, represents an acquisition of net position that applies to one or more future periods and so will not be recognized as an inflow of resources (revenue) until that time.

f. Receivable and Payable Balances

The District believes that sufficient detail of receivable and payable balances is provided in the financial statements to avoid the obscuring of significant components by aggregation. Therefore, no disclosure is provided

GILMER INDEPENDENT SCHOOL DISTRICT
NOTES TO THE FINANCIAL STATEMENTS
FOR THE YEAR ENDED AUGUST 31, 2017

which disaggregates those balances.

There are no significant receivables which are not scheduled for collection within one year of year end.

g. Interfund Activity

Interfund activity results from loans, services provided, reimbursements or transfers between funds. Loans are reported as interfund receivables and payables as appropriate and are subject to elimination upon consolidation. Services provided, deemed to be at market or near market rates, are treated as revenues and expenditures or expenses. Reimbursements occur when one fund incurs a cost, charges the appropriate benefiting fund and reduces its related cost as a reimbursement. All other interfund transactions are treated as transfers. Transfers In and Transfers Out are netted and presented as a single "Transfers" line on the government-wide statement of activities. Similarly, interfund receivables and payables are netted and presented as a single "Internal Balances" line of the government-wide statement of net position.

h. Use of Estimates

The preparation of financial statements in conformity with GAAP requires the use of management's estimates.

i. Data Control Codes

Data Control Codes appear in the rows and above the columns of certain financial statements. The TEA requires the display of these codes in the financial statements filed with TEA in order to ensure accuracy in building a statewide database for policy development and funding plans.

j. Fund Balances - Governmental Funds

Fund balances of the governmental funds are classified as follows:

Nonspendable Fund Balance - represents amounts that cannot be spent because they are either not in spendable form (such as inventory or prepaid insurance) or legally required to remain intact (such as notes receivable or principal of a permanent fund).

Restricted Fund Balance - represents amounts that are constrained by external parties, constitutional provisions or enabling legislation.

Committed Fund Balance - represents amounts that can only be used for a specific purpose because of a formal action by the District's Board of Trustees. Committed amounts cannot be used for any other purpose unless the Board of Trustees removes those constraints by taking the same type of formal action. Committed fund balance amounts may be used for other purposes with appropriate due process by the Board of Trustees. Commitments are typically created through a board resolution prior to the end of fiscal year. Committed fund balance amounts differ from restricted balances in that the constraints on their use do not come from outside parties, constitutional provisions, or enabling legislation.

Assigned Fund Balance - represents amounts which the District intends to use for a specific purpose, but that do not meet the criteria to be classified as restricted or committed. The Board of Trustees has delegated the authority to assign fund balance to the Director of Finance and Business Services or the Superintendent by board resolution. Specific amounts that are not restricted or committed in a special revenue, capital projects, debt service, or permanent fund are assigned for purposes in accordance with the nature of their fund type or the fund's primary purpose. Assignments within the general fund conveys that the intended use of those amounts is for a specific purpose that is narrower than the general purposes of the District itself.

Unassigned Fund Balance - represents amounts which are unconstrained in that they may be spent for any purpose. Only the general fund reports a positive unassigned fund balance. Other governmental

GILMER INDEPENDENT SCHOOL DISTRICT
NOTES TO THE FINANCIAL STATEMENTS
FOR THE YEAR ENDED AUGUST 31, 2017

funds might report a negative balance in this classification because of overspending for specific purposes for which amounts had been restricted, committed or assigned.

The Board of Trustees has adopted a minimum fund balance policy. The District shall strive to maintain a yearly fund balance in the general operating fund in which the total fund balance is 17 percent of the total operating expenditures and the unassigned fund balance is 10 percent of the total operating expenditures.

k. Net Position Flow Assumption

Sometimes the District will fund outlays for a particular purpose from both restricted (e.g., restricted bond or grant proceeds) and unrestricted resources. In order to calculate the amounts to report as restricted net position and unrestricted net position in the government-wide and proprietary fund financial statements, a flow assumption must be made about the order in which the resources are considered to be applied. It is the District's policy to consider restricted net position to have been depleted before unrestricted net position is applied.

l. Fund Balance Flow Assumptions

Sometimes the District will fund outlays for a particular purpose from both restricted and unrestricted resources (the total of committed, assigned, and unassigned fund balance). In order to calculate the amounts to report as restricted, committed, assigned, and unassigned fund balance in the governmental fund financial statements, a flow assumption must be made about the order in which the resources are considered to be applied. It is the District's policy to consider restricted fund balance to have been depleted before using any of the components of unrestricted fund balance. Further, when the components of unrestricted fund balance can be used for the same purpose, committed fund balance is depleted first, followed by assigned fund balance. Unassigned fund balance is applied last.

4. Pensions

The fiduciary net position of the Teacher Retirement System of Texas (TRS) has been determined using the flow of economic resources measurement focus and full accrual basis of accounting. This includes for purposes of measuring the net pension liability, deferred outflows of resources and deferred inflows of resources related to pensions, pension expense, and information about assets, liabilities and additions to/deductions from TRS' fiduciary net position. Benefit payments (including refunds of employee contributions) are recognized when due and payable in accordance with the benefit terms. Investments are reported at fair value.

B. Compliance and Accountability

1. Finance-Related Legal and Contractual Provisions

In accordance with GASB Statement No. 38, "Certain Financial Statement Note Disclosures," violations of finance-related legal and contractual provisions, if any, are reported below, along with actions taken to address such violations:

<u>Violation</u>	<u>Action Taken</u>
None reported	Not applicable

2. Deficit Fund Balance or Fund Net Position of Individual Funds

Following are funds having deficit fund balances or fund net position at year end, if any, along with remarks which address such deficits:

<u>Fund Name</u>	<u>Deficit Amount</u>	<u>Remarks</u>
None reported	Not applicable	Not applicable

GILMER INDEPENDENT SCHOOL DISTRICT

NOTES TO THE FINANCIAL STATEMENTS

FOR THE YEAR ENDED AUGUST 31, 2017

C. Deposits and Investments

The District's funds are required to be deposited and invested under the terms of a depository contract. The depository bank deposits for safekeeping and trust with the District's agent bank approved pledged securities in an amount sufficient to protect District funds on a day-to-day basis during the period of the contract. The pledge of approved securities is waived only to the extent of the depository bank's dollar amount of Federal Deposit Insurance Corporation ("FDIC") insurance.

1. Cash Deposits:

At August 31, 2017, the carrying amount of the District's deposits (cash, certificates of deposit, and interest-bearing savings accounts included in temporary investments) was \$3,633,526 and the bank balance was \$3,985,475. The District's cash deposits at August 31, 2017 and during the year ended August 31, 2017, were not entirely covered by FDIC insurance or by pledged collateral held by the District's agent bank in the District's name.

In addition, the following is disclosed regarding coverage of combined balances on the date of highest deposit:

- a. Depository: First National Bank
- b. The market value of securities pledged as of the date of the highest combined balance on deposit was \$7,603,504.
- c. The highest combined balances of cash, savings and time deposit accounts amounted to \$8,034,579 and occurred during the month of October, 2016.
- d. Total amount of FDIC coverage at the time of the largest combined balance was \$293,742.

2. Investments:

The District is required by Government Code Chapter 2256, The Public Funds Investment Act, to adopt, implement, and publicize an investment policy. That policy must address the following areas: (1) safety of principal and liquidity, (2) portfolio diversification, (3) allowable investments, (4) acceptable risk levels, (5) expected rates of return, (6) maximum allowable stated maturity of portfolio investments, (7) maximum average dollar-weighted maturity allowed based on the stated maturity date for the portfolio, (8) investment staff quality and capabilities, and (9) bid solicitation preferences for certificates of deposit.

The Public Funds Investment Act ("Act") requires an annual audit of investment practices. Audit procedures in this area conducted as a part of the audit of the basic financial statements disclosed that in the areas of investment practices, management reports and establishment of appropriate policies, the District adhered to the requirements of the Act. Additionally, investment practices of the District were in accordance with local policies.

The Act determines the types of investments which are allowable for the District. These include, with certain restrictions, 1) obligations of the U.S. Treasury, U.S. agencies, and the State of Texas, 2) certificates of deposit, 3) certain municipal securities, 4) securities lending program, 5) repurchase agreements, 6) bankers acceptances, 7) mutual funds, 8) investment pools, 9) guaranteed investment contracts, and 10) commercial paper.

The District's investments at August 31, 2017 are shown below.

<u>Investment or Investment Type</u>	<u>Maturity</u>	<u>Fair Value</u>
Lone Star Investment Pool	Avg 22 days	\$ 141,496
Certificate of Deposit	2/24/2018	2,011,422
Total Investments		<u>\$ 2,152,918</u>

GILMER INDEPENDENT SCHOOL DISTRICT
NOTES TO THE FINANCIAL STATEMENTS
FOR THE YEAR ENDED AUGUST 31, 2017

3. Analysis of Specific Deposit and Investment Risks

GASB Statement No. 40 requires a determination as to whether the District was exposed to the following specific investment risks at year end and if so, the reporting of certain related disclosures:

a. Credit Risk

Credit risk is the risk that an issuer or other counterparty to an investment will not fulfill its obligations. The ratings of securities by nationally recognized rating agencies are designed to give an indication of credit risk. At year end, the District was not significantly exposed to credit risk.

At August 31, 2017, the District's investments, other than those which are obligations of or guaranteed by the U. S. Government, are rated as to credit quality as follows:

<u>Investment</u>	<u>S&P Rating</u>
Lone Star Investment Pool - Government Overnight Fund	AAA

b. Custodial Credit Risk

Deposits are exposed to custodial credit risk if they are not covered by depository insurance and the deposits are uncollateralized, collateralized with securities held by the pledging financial institution, or collateralized with securities held by the pledging financial institution's trust department or agent but not in the District's name.

Investment securities are exposed to custodial credit risk if the securities are uninsured, are not registered in the name of the government, and are held by either the counterparty or the counterparty's trust department or agent but not in the District's name.

At year end, the District was not exposed to custodial credit risk.

c. Concentration of Credit Risk

This risk is the risk of loss attributed to the magnitude of a government's investment in a single issuer. At year end, the District was not exposed to concentration of credit risk.

d. Interest Rate Risk

This is the risk that changes in interest rates will adversely affect the fair value of an investment. At year end, the District was not exposed to interest rate risk.

e. Foreign Currency Risk

This is the risk that exchange rates will adversely affect the fair value of an investment. At year end, the District was not exposed to foreign currency risk.

Investment Accounting Policy

The District's general policy is to report money market investments and short-term participating interest-earning investment contracts at amortized cost and to report nonparticipating interest-earning investment contracts using a cost-based measure. However, if the fair value of an investment is significantly affected by the impairment of the credit standing of the issuer or by other factors, it is reported at fair value. All other investments are reported at fair value unless a legal contract exists which guarantees a higher value. The term "short-term" refers to investments which have a remaining term of one year or less at time of purchase. The term "nonparticipating" means that the investment's value does not vary with market interest rate changes. Nonnegotiable certificates of deposit are examples of nonparticipating interest-earning investment contracts.

GILMER INDEPENDENT SCHOOL DISTRICT
NOTES TO THE FINANCIAL STATEMENTS
FOR THE YEAR ENDED AUGUST 31, 2017

Public Funds Investment Pools

Public funds investment pools in Texas ("Pools") are established under the authority of the Interlocal Cooperation Act, Chapter 79 of the Texas Government Code, and are subject to the provisions of the Public Funds Investment Act (the "Act"), Chapter 2256 of the Texas Government Code. In addition to other provisions of the Act designed to promote liquidity and safety of principal, the Act requires Pools to: 1) have an advisory board composed of participants in the pool and other persons who do not have a business relationship with the pool and are qualified to advise the pool; 2) maintain a continuous rating of no lower than AAA or AAA-m or an equivalent rating by at least one nationally recognized rating service; and 3) maintain the market value of its underlying investment portfolio within one half of one percent of the value of its shares.

The District's investments in Pools are reported at an amount determined by the fair value per share of the pool's underlying portfolio, unless the pool is 2a7-like, in which case they are reported at share value. A 2a7-like pool is one which is not registered with the Securities and Exchange Commission ("SEC") as an investment company, but nevertheless has a policy that it will, and does, operate in a manner consistent with the SEC's Rule 2a7 of the Investment Company Act of 1940.

Lone Star Investment Pool

The Lone Star Investment Pool (Lone Star) is a public funds investment pool created pursuant to the Interlocal Cooperation Act, Texas Government Code, Chapter 791, and the Public Funds Investment Act, Texas Government Code, Chapter 2256. Lone Star is administered by First Public, a subsidiary of the Texas Association of School Boards (TASB), with Standish and American Beacon Advisors managing the investment and reinvestment of Lone Star's assets. State Street Bank provides custody and valuation services to Lone Star. All of the board of trustees' eleven members are Lone Star participants by either being employees or elected officials of a participant. Lone Star has established an advisory board composed of both pool members and non-members. Lone Star is rated AAA by Standard and Poor's and operated in a manner consistent with the the SEC's Rule 2a7 of the Investment Company Act of 1940. The District is invested in the Government Overnight Fund of Lone Star which seeks to maintain a net asset value of one dollar. Lone Star has 3 different funds: Government Overnight, Corporate Overnight and Corporate Overnight Plus. Government and Corporate Overnight maintain a net asset value of one dollar and the Corporate Overnight Plus maintains a net asset value of 50 cents.

D. Capital Assets

Capital asset activity for the year ended August 31, 2017, was as follows:

	Beginning Balances	Increases	Decreases	Ending Balances
Governmental activities:				
Capital assets not being depreciated:				
Land	\$ 1,341,374	\$ --	\$ --	\$ 1,341,374
Total capital assets not being depreciated	<u>1,341,374</u>	<u>--</u>	<u>--</u>	<u>1,341,374</u>
Capital assets being depreciated:				
Buildings and improvements	40,679,133	34,325	--	40,713,458
Equipment	1,719,689	50,142	--	1,769,831
Vehicles	2,505,379	189,300	--	2,694,679
Total capital assets being depreciated	<u>44,904,201</u>	<u>273,767</u>	<u>--</u>	<u>45,177,968</u>
Less accumulated depreciation for:				
Buildings and improvements	(21,248,373)	(1,019,368)	--	(22,267,741)
Equipment	(1,397,955)	(76,486)	--	(1,474,441)
Vehicles	(1,847,427)	(144,010)	--	(1,991,437)
Total accumulated depreciation	<u>(24,493,755)</u>	<u>(1,239,864)</u>	<u>--</u>	<u>(25,733,619)</u>
Total capital assets being depreciated, net	<u>20,410,446</u>	<u>(966,097)</u>	<u>--</u>	<u>19,444,349</u>
Governmental activities capital assets, net	<u>\$ 21,751,820</u>	<u>\$ (966,097)</u>	<u>\$ --</u>	<u>\$ 20,785,723</u>

GILMER INDEPENDENT SCHOOL DISTRICT
NOTES TO THE FINANCIAL STATEMENTS
FOR THE YEAR ENDED AUGUST 31, 2017

Depreciation was charged to functions as follows:

Instruction	\$ 672,907
Instructional Resources and Media Services	21,040
School Leadership	6,580
Guidance, Counseling, & Evaluation Services	476
Health Services	2,537
Student Transportation	112,648
Food Services	73,396
Extracurricular Activities	311,442
General Administration	45
Plant Maintenance and Operations	31,100
Security and Monitoring Services	5,943
Data Processing Services	1,750
	<u>\$ 1,239,864</u>

E. Interfund Balances and Activities

1. Due To and From Other Funds

Balances due to and due from other funds at August 31, 2017, consisted of the following:

<u>Due To Fund</u>	<u>Due From Fund</u>	<u>Amount</u>	<u>Purpose</u>
General Fund	Other Governmental Funds	\$ 98,011	Short-term loans
	Total	<u>\$ 98,011</u>	

All amounts due are scheduled to be repaid within one year.

2. Transfers To and From Other Funds

Transfers to and from other funds at August 31, 2017, consisted of the following:

<u>Transfers From</u>	<u>Transfers To</u>	<u>Amount</u>	<u>Reason</u>
Other Governmental Funds	General Fund	\$ 6,056	Grant expenditures
General Fund	Debt Service Fund	755,000	Debt payments
	Total	<u>\$ 761,056</u>	

F. Long-Term Obligations

The District has entered into a continuing disclosure undertaking to provide Annual Reports and Material Event Notices to the State Information Depository of Texas, which is the Municipal Advisory Council. This information is required under SEC Rule 15c2-12 to enable investors to analyze the financial condition and operations of the District.

1. Long-Term Obligation Activity

Long-term obligations include debt and other long-term liabilities. Changes in long-term obligations for the year ended August 31, 2017, are as follows:

GILMER INDEPENDENT SCHOOL DISTRICT
NOTES TO THE FINANCIAL STATEMENTS
FOR THE YEAR ENDED AUGUST 31, 2017

	Beginning Balance	Increases	Decreases	Ending Balance	Amounts Due Within One Year
<u>Governmental activities:</u>					
General obligation bonds	\$ 15,910,000	\$ --	\$ 720,000	\$ 15,190,000	\$ 855,000
Capital leases	82,859	--	82,859	--	--
Notes	2,227,707	634,192	288,230	2,573,669	323,562
Unamortized bond premium	998,801	--	108,209	890,592	--
Total governmental activities	<u>\$ 19,219,367</u>	<u>\$ 634,192</u>	<u>\$ 1,199,298</u>	<u>\$ 18,654,261</u>	<u>\$ 1,178,562</u>

2. Notes Payable

Local Government Code Section 271.005 gives the District the authority to enter into installment agreements for the purchase of personal property:

On February 15, 2013, the District issued Maintenance Tax Notes in the amount of \$2,110,000 to finance improvements to the stadium.

On June 20, 2013, the District entered into a loan agreement with Gilmer National Bank for the purpose of capital improvements and equipment purchases. The original amount of the loan was \$500,000.

On December 18, 2014, the District entered into a loan agreement with First National Bank for the purpose of capital improvements and equipment purchases. The original amount of the loan was \$300,000.

On October 27, 2016, the District entered into a loan agreement with First National Bank for the purpose of capital improvements. The original amount of the loan was \$250,200.

On July 13, 2017, the District entered into a loan agreement with Government Capital for the purpose of implementing a turnkey energy conservation program. The original amount of the loan was \$383,992.

Note payable currently outstanding are as follows:

<u>Purpose:</u>	Interest Rates	Maturity Date	Amount
Governmental Activities - Capital Purchases	2.0-2.5%	8/15/2030	\$ 1,680,000
Governmental Activities - Capital Purchases	3.00%	8/16/2018	106,202
Governmental Activities - Capital Purchases	1.650%	4/18/2019	153,275
Governmental Activities - Capital Purchases	1.990%	4/14/2022	250,200
Governmental Activities - Capital Purchases	3.250%	2/12/2021	383,992
			<u>\$ 2,573,669</u>

3. Bonds Payable

<u>Title of Issue</u>	Interest Rates	Maturity Dates	Amount
Series 2012 Unlimited Tax Refunding Bonds	2.00-3.50%	2/15/2030	\$ 7,000,000
Series 2013 Unlimited Tax Refunding Bonds	2.00-3.25%	2/15/2033	6,130,000
Series 2014 Unlimited Tax Refunding Bonds	2.00-4.00%	2/15/2032	2,060,000
			<u>\$ 15,190,000</u>

4. Debt Service Requirements

Debt service requirements on long-term debt at August 31, 2017, are as follows:

GILMER INDEPENDENT SCHOOL DISTRICT
NOTES TO THE FINANCIAL STATEMENTS
FOR THE YEAR ENDED AUGUST 31, 2017

Year Ending August 31,	Governmental Activities		
	Principal	Interest	Total
2018	\$ 1,178,562	\$ 517,168	\$ 1,695,730
2019	1,089,943	494,563	1,584,506
2020	1,041,704	468,095	1,509,799
2021	1,070,845	438,241	1,509,086
2022	1,002,615	406,776	1,409,391
2023-2027	5,245,000	1,577,475	6,822,475
2028-2032	6,020,000	698,875	6,718,875
2033	1,115,000	18,119	1,133,119
Totals	<u>\$ 17,763,669</u>	<u>\$ 4,619,312</u>	<u>\$ 22,382,981</u>

G. Risk Management

The District is exposed to various risks of loss related to torts, theft, damage or destruction of assets, errors and omissions, injuries to employees, and natural disasters. During fiscal year 2017, the District purchased commercial insurance to cover general liabilities. There were no significant reductions in coverage in the past fiscal year and there were no settlements exceeding insurance coverage for each of the past three fiscal years.

H. Pension Plan

1. Plan Description

The District participates in a cost-sharing multiple-employer defined benefit pension that has a special funding situation. The plan is administered by the Teacher Retirement System of Texas (TRS). It is a defined benefit pension plan established and administered in accordance with the Texas Constitution, Article XVI, Section 67, and Texas Government Code, Title 8, Subtitle C. The pension trust fund is a qualified pension trust under section 401(a) of the Internal Revenue Code. The Texas Legislature establishes benefits and contribution rates within the guidelines of the Texas Constitution. The pension's Board of Trustees does not have the authority to establish or amend benefit terms.

All employees of public, state-supported educational institutions in Texas who are employed for one-half or more of the standard work load and who are not exempted from membership under Texas Government Code, Title 8, Section 822.002 are covered by the system.

2. Pension Plan Fiduciary Net Position

Detail information about the Teacher Retirement System's fiduciary net position is available in a separately-issued Comprehensive Annual Financial Report that includes financial statements and required supplementary information. That report may be obtained on the internet at https://www.trs.texas.gov/TRS%20Documents/cafr_2016.pdf; by writing to TRS at 1000 Red River Street, Austin, TX, 78701-2698; or by calling (512) 542-6592.

3. Benefits Provided

TRS provides service and disability retirement, as well as death and survivor benefits, to eligible employees (and their beneficiaries) of public and higher education in Texas. The pension formula is calculated using 2.3 percent (multiplier) times the average of the five highest annual creditable salaries times years of credited service to arrive at the annual standard annuity except for members who are grandfathered, the three highest annual salaries are used. The normal service retirement is at age 65 with 5 years of credited service or when the sum of the member's age and years of credited service equals 80 or more years. Early retirement is at age 55 with 5 years of service credit or earlier than 55 with 30 years of service credit. There are additional provisions for early retirement if the sum of the member's age and years of service credit total at least 80, but the member is less than age 60 or 62 depending on date of employment, or if the member was grandfathered in under a previous rule. There are no automatic post-employment benefit changes; including automatic COLAs. Ad hoc post-employment benefit changes, including ad hoc COLAs, can be granted by the Texas Legislature as noted

GILMER INDEPENDENT SCHOOL DISTRICT
NOTES TO THE FINANCIAL STATEMENTS
FOR THE YEAR ENDED AUGUST 31, 2017

in the Plan description in (1.) above.

4. Contributions

Contribution requirements are established or amended pursuant to Article 16, Section 67 of the Texas Constitution which requires the Texas Legislature to establish a member contribution rate of not less than 6% of the member's annual compensation and a state contribution rate of not less than 6% and not more than 10% of the aggregate annual compensation paid to members of the system during the fiscal year. Texas Government Code Section 821.006 prohibits benefit improvements, if as a result of the particular action, the time required to amortize TRS' unfunded actuarial liabilities would be increased to a period that exceeds 31 years, or, if the amortization period already exceeds 31 years, the period would be increased by such action.

Employee contribution rates are set in state statute, Texas Government Code 825.402. Senate Bill 1458 of the 83rd Texas Legislature amended Texas Government Code 825.402 for member contributions and established employee contribution rates for fiscal years 2014 through 2017. The 83rd Texas Legislature, General Appropriations Act (GAA) established the employer contribution rates for fiscal years 2014 and 2015. The 84th Texas Legislature, General Appropriations Act (GAA) established the employer contribution rates for fiscal years 2016 and 2017.

<u>Contribution Rates</u>		
	<u>2016</u>	<u>2017</u>
Member	7.2%	7.7%
Non-Employer Contributing Entity (NECE - State)	6.8%	6.8%
Employers	6.8%	6.8%
District's 2017 Employer Contributions	\$ 452,843	
District's 2017 Member Contributions	\$ 1,151,815	
NECE 2016 On-Behalf Contributions to District	\$ 784,819	

Contributors to the plan include members, employers and the State of Texas as the only non-employer contributing entity. The State is the employer for senior colleges, medical schools and state agencies including TRS. In each respective role, the State contributes to the plan in accordance with state statutes and the General Appropriations Act (GAA).

As the non-employer contributing entity for public education and junior colleges, the State of Texas contributes to the retirement system an amount equal to the current employer contribution rate times the aggregate annual compensation of all participating members of the pension trust fund during that fiscal year reduced by the amounts described below which are paid by the employers. Employers (public school, junior college, other entities or the State of Texas as the employer for senior universities and medical schools) are required to pay the employer contribution rate in the following instances:

- On the portion of the member's salary that exceeds the statutory minimum for members entitled to the statutory minimum under Section 21.402 of the Texas Education Code.
- During a new member's first 90 days of employment.
- When any part or all of an employee's salary is paid by federal funding sources, a privately sponsored source, from non-educational and general, or local funds.
- When the employing district is a public junior college or junior college district, the employer shall contribute to the retirement system an amount equal to 50% of the state contribution rate for certain instructional or administrative employees; and 100% of the state contribution rate for all other employees.

In addition to the employer contributions listed above, there are two additional surcharges an employer is subject to:

GILMER INDEPENDENT SCHOOL DISTRICT

NOTES TO THE FINANCIAL STATEMENTS

FOR THE YEAR ENDED AUGUST 31, 2017

- When employing a retiree of the Teacher Retirement System the employer shall pay both the member contribution and the state contribution as an employment after retirement surcharge.
- When a school district or charter school does not contribute to the Federal Old-Age, Survivors and Disability Insurance (OASDI) Program for certain employees, they must contribute 1.5% of the state contribution rate for certain instructional or administrative employees; and 100% of the state contribution rate for all other employees.

5. Actuarial Assumptions

The total pension liability in the August 31, 2016 actuarial evaluation was determined using the following actuarial assumptions:

Valuation Date	August 31, 2016
Actuarial Cost Method	Individual Entry Age Normal
Asset Valuation Method	Market Value
Single Discount Rate	8%
Long-term expected Investment Rate of Return	8%
Inflation	2.5%
Salary Increases	3.5% to 9.5%, including inflation
Payroll Growth Rate	2.5%
Benefit Changes during the year	None
Ad hoc post-employment benefit changes	None

The actuarial methods and assumptions are based primarily on a study of actual experience for the four year period ending August 31, 2014 and adopted on September 24, 2015.

6. Discount Rate

The discount rate used to measure the total pension liability was 8%. There was no change in the discount rate since the previous year. The projection of cash flows used to determine the discount rate assumed that contributions from plan members and those of the contributing employers and the non-employer contributing entity are made at the statutorily required rates. Based on those assumptions, the pension plan's fiduciary net position was projected to be available to make all future benefit payments of current plan members. Therefore, the long-term expected rate of return on pension plan investments was applied to all periods of projected benefit payments to determine the total pension liability.

The long-term rate of return on pension plan investments is 8%. The long-term expected rate of return on pension plan investments was determined using a building block method in which best-estimates ranges of expected future real rates of return (expected returns, net of pension plan investment expense and inflation) are developed for each major asset class. These ranges are combined to produce the long-term expected rate of return by weighting the expected future real rates of return by the target asset allocation percentage and by adding expected inflation. Best estimates of geometric real rates of return for each major asset class included in the Systems target asset allocation as of August 31, 2016 are summarized below:

GILMER INDEPENDENT SCHOOL DISTRICT

NOTES TO THE FINANCIAL STATEMENTS

FOR THE YEAR ENDED AUGUST 31, 2017

Teacher Retirement System of Texas Asset Allocation and Long-Term Expected Real Rate of Return As of August 31, 2016			
Asset Class	Target Allocation	Long-term Expected Geometric Real Rate of Return	Expected Contribution to Long-term Portfolio Returns *
Global Equity			
U.S.	18%	4.6%	1.0%
Non-U.S. Developed	13%	5.1%	0.8%
Emerging Markets	9%	5.9%	0.7%
Directional Hedge Funds	4%	3.2%	0.1%
Private Equity	13%	7.0%	1.1%
Stable Value			
U.S. Treasuries	11%	0.7%	0.1%
Absolute Return	0%	1.8%	0.0%
Stable Value Hedge Funds	4%	3.0%	0.1%
Cash	1%	-0.2%	0.0%
Real Return			
Global Inflation Linked Bonds	3%	0.9%	0.0%
Real Assets	16%	5.1%	1.1%
Energy & Natural Resources	3%	6.6%	0.2%
Commodities	0%	1.2%	0.0%
Risk Parity			
Risk Parity	5%	6.7%	0.3%
Inflation Expectation			2.2%
Alpha			1.0%
Total	100%		8.7%

* The expected contribution to returns incorporates the volatility drag resulting from the conversion between arithmetic and geometric mean returns.

7. Discount Rate Sensitivity Analysis

The following schedule shows the impact of the net pension liability if the discount rate used was 1% less than and 1% greater than the discount rate that was used (8%) in measuring the Net Pension Liability.

	1% Decrease in Discount Rate 7%	Discount Rate 8%	1% Increase in Discount Rate 9%
District's proportionate share of the net pension liability	\$ 7,934,492	\$ 5,126,756	\$ 2,745,229

8. Pension Liabilities, Pension Expense, and Deferred Outflows of Resources and Deferred Inflows of Resources Related to Pensions

At August 31, 2017, the District reported a liability of \$5,126,756 for its proportionate share of the TRS's net pension liability. This liability reflects a reduction for State pension support provided to the District. The amount recognized by the District as its proportionate share of the net pension liability, the related State support, and the total portion of the net pension liability that was associated with the District were as follows:

GILMER INDEPENDENT SCHOOL DISTRICT
NOTES TO THE FINANCIAL STATEMENTS
FOR THE YEAR ENDED AUGUST 31, 2017

District's proportionate share of the collective net pension liability	\$ 5,126,756
State's proportionate share that is associated with the District	<u>9,315,677</u>
Total	<u>\$ 14,442,433</u>

The net pension liability was measured as of August 31, 2016 and the total pension liability used to calculate the net pension liability was determined by an actuarial valuation as of that date. The District's proportion of the net pension liability was based on the District's contributions to the pension plan relative to the contributions of all employers to the plan for the period September 1, 2015 through August 31, 2016.

At August 31, 2016 the employer's proportion of the collective net pension liability was 0.013567%. which was an increase of 0.000152% from its proportion measured as of August 31, 2015.

Changes Since the Prior Actuarial Valuation -

There were no changes to the actuarial assumptions or other inputs that affected measurement of the total pension liability since the prior measurement period.

There were no changes of benefit terms that affected measurement of the total pension liability during the measurement period.

For the year ended August 31, 2017, the District recognized pension expense of \$966,745 and revenue of \$966,745 for support provided by the State.

At August 31, 2017, the District reported its proportionate share of the TRS' deferred outflows of resources and deferred inflows of resources related to pensions from the following sources:

	Deferred Outflows of Resources	Deferred Inflows of Resources
Differences between expected and actual economic experience	\$ 80,387	\$ 153,082
Changes in actuarial assumptions	156,254	142,107
Difference between projected and actual investment earnings	434,123	--
Changes in proportion and difference between the District's contributions and the proportionate share of contributions	969,100	434
Contributions paid to TRS subsequent to the measurement date	<u>452,843</u>	<u>--</u>
Total	<u>\$ 2,092,707</u>	<u>\$ 295,623</u>

The net amounts of the District's balances of deferred outflows and inflows of resources related to pensions will be recognized in pension expense as follows:

Year Ended August 31	Pension Expense Amount
2018	\$ 231,761
2019	\$ 231,761
2020	\$ 508,666
2021	\$ 210,485
2022	\$ 129,447
Thereafter	\$ 32,121

GILMER INDEPENDENT SCHOOL DISTRICT
NOTES TO THE FINANCIAL STATEMENTS
FOR THE YEAR ENDED AUGUST 31, 2017

I. Retiree Health Care Plans

1. TRS-Care

a. Plan Description

The District contributes to the Texas Public School Retired Employees Group Insurance Program (TRS-Care), a cost-sharing multiple-employer defined benefit postemployment health care plan administered by the Teacher Retirement System of Texas (TRS). TRS-Care Retired Plan provides health care coverage for certain persons (and their dependents) who retired under the Teacher Retirement System of Texas. The statutory authority for the program is Texas Insurance Code, Chapter 1575. Section 1575.052 grants the TRS Board of Trustees the authority to establish and amend basic and optional group insurance coverage for participants. The TRS issues a publicly available financial report that includes financial statements and required supplementary information for TRS-Care. That report may be obtained by visiting the TRS web site at www.trs.state.tx.us under the TRS Publications heading, by writing to the Communications Department of the Teacher Retirement System of Texas at 1000 Red River Street, Austin, Texas 78701, or by calling the TRS Communications Department at 1-800-223-8778.

b. Funding Policy

Contribution requirements are not actuarially determined but are legally established each biennium by the Texas Legislature. Texas Insurance Code, Sections 1575.202, 203, and 204 establish state, active employee, and public school contributions, respectively. Funding for free basic coverage is provided by the program based upon public school district payroll. Per Texas Insurance Code, Chapter 1575, the public school contribution may not be less than 0.25% or greater than 0.75% of the salary of each active employee of the public school. Funding for optional coverage is provided by those participants selecting the optional coverage. The State of Texas contribution rate was 1% for fiscal years 2017, 2016 and 2015. The active public school employee contributions rates were 0.65% of public school payroll, with school districts contributing a percentage of payroll set at 0.55% for fiscal years 2017, 2016 and 2015. For the years ended August 31, 2017, 2016, and 2015, the State's contributions to TRS-Care were \$136,172, \$73,148, and \$69,483, respectively, the active member contributions were \$97,231, \$95,092, and \$90,327, respectively, and the District's contributions were \$82,273, \$80,462, and \$76,432, respectively, which equaled the required contributions each year.

2. Medicare Part D Subsidies

The Medicare Prescription Drug, Improvement, and Modernization Act of 2003, which was effective January 1, 2006, established prescription drug coverage for Medicare beneficiaries known as Medicare Part D. One of the provisions of Medicare Part D allows for the Texas Public School Retired Employee Group Insurance Program (TRS-Care) to receive retiree drug subsidy payments from the federal government to offset certain prescription drug expenditures for eligible TRS-Care participants. For the fiscal years ended August 31, 2017, 2016, and 2015, the subsidy payments received by TRS-Care on behalf of the District were \$44,692, \$56,572, and \$56,034, respectively.

J. Employee Health Care Coverage

During the year ended August 31, 2017, employees of the District were covered by a health insurance plan (the Plan). The District paid premiums of \$225 per month per employee to the Plan. Employees, at their option, authorized payroll withholdings to pay premiums for dependents. All premiums were paid to a third party administrator, acting on behalf of the licensed insurer. The Plan was authorized by Section 21.922, Texas Education Code and was documented by contractual agreement.

The contract between the District and the third party administrator is renewable September 1, 2017, and terms of coverage and premium costs are included in the contractual provisions.

GILMER INDEPENDENT SCHOOL DISTRICT

NOTES TO THE FINANCIAL STATEMENTS

FOR THE YEAR ENDED AUGUST 31, 2017

K. Commitments and Contingencies

1. Contingencies

The District participates in grant programs which are governed by various rules and regulations of the grantor agencies. Costs charged to the respective grant programs are subject to audit and adjustment by the grantor agencies; therefore, to the extent that the District has not complied with the rules and regulations governing the grants, refunds of any money received may be required and the collectibility of any related receivable may be impaired. In the opinion of the District, there are no significant contingent liabilities relating to compliance with the rules and regulations governing the respective grants; therefore, no provision has been recorded in the accompanying basic financial statements for such contingencies.

2. Litigation

No reportable litigation was pending against the District at August 31, 2017.

L. Shared Services Arrangements

Shared Services Arrangement - Membership

The District participates in a shared services arrangement ("SSA") for special education and alternative education services with the following school districts:

Special Education

Big Sandy ISD
Harmony ISD
New Diana ISD
Union Grove ISD
Union Hill ISD
Gladewater ISD

Alternative Education

Big Sandy ISD
Harmony ISD
New Diana ISD
Union Grove ISD
Union Hill ISD
Ore City ISD
Gladewater ISD

The District does not account for revenues or expenditures in this program and does not disclose them in these financial statements. The District neither has a joint ownership interest in capital assets purchased by the fiscal agent, Big Sandy ISD, nor does the District have a net equity interest in the fiscal agent. The fiscal agent is neither accumulating significant financial resources nor fiscal exigencies that would give rise to a future additional benefit or burden to the District. The fiscal agent manager is responsible for all financial activities of the SSA.

M. Committed and Assigned Fund Balance

Other committed fund balance consists of the following:

Other Governmental Funds - committed for campus activities	\$	63,411
--	----	--------

N. Worker's Compensation Coverage

The District joined together with other schools in the East Texas area to form the East Texas Educational Insurance Association, a public entity risk pool currently operating a workers' compensation risk management and insurance program for various member districts. Total workers' compensation claims paid amounted to \$8,123 for current year claims and \$5,219 for claims incurred in prior years. When and if other school districts in the Association exceed their annual loss fund maximums, the District will be required to pay a percentage share of the excess. A reconciliation of changes in the liability for claims for the current and prior fiscal year is presented below:

	Beginning Balance	Claims Incurred	Claims Paid	Ending Balance
Year Ended August 31, 2017	\$ 63,103	\$ 34,847	\$ 13,342	\$ 84,608
Year Ended August 31, 2016	59,093	32,771	28,761	63,103

GILMER INDEPENDENT SCHOOL DISTRICT

NOTES TO THE FINANCIAL STATEMENTS FOR THE YEAR ENDED AUGUST 31, 2017

O. Revenue from Local Sources

Revenue from local sources consists of the following:

	General Fund	Other Governmental Funds	Total
Property Taxes	\$ 9,489,134	\$ 410,159	\$ 9,899,293
Services Provided to Other Districts	98,291	3,006	101,297
Tuition and Fees	18,024	--	18,024
Investment Earnings	28,578	1,663	30,241
Athletic Activities	104,859	--	104,859
Food Service Activities	--	198,625	198,625
Campus Activity Funds	--	201,599	201,599
Other	132,450	--	132,450
Permanent School Fund	83,600	--	83,600
	<u>\$ 9,954,936</u>	<u>\$ 815,052</u>	<u>\$ 10,769,988</u>

O. Subsequent Events

Management has evaluated subsequent events through December 5, 2017, the date on which the financial statements were available to be issued.

Required Supplementary Information

Required supplementary information includes financial information and disclosures required by the Governmental Accounting Standards Board but not considered a part of the basic financial statements.

GILMER INDEPENDENT SCHOOL DISTRICT

GENERAL FUND

BUDGETARY COMPARISON SCHEDULE

FOR THE YEAR ENDED AUGUST 31, 2017

EXHIBIT G-1

Page 1 of 2

Data Control Codes		1	2	3	Variance with Final Budget Positive (Negative)
		Budgeted Amounts			
		Original	Final	Actual	
REVENUES:					
5700	Local and Intermediate Sources	\$ 9,356,274	\$ 10,237,053	\$ 9,954,936	\$ (282,117)
5800	State Program Revenues	10,843,946	11,224,946	10,741,104	(483,842)
5900	Federal Program Revenues	50,000	50,000	48,246	(1,754)
5020	Total Revenues	20,250,220	21,511,999	20,744,286	(767,713)
EXPENDITURES:					
Current:					
	Instruction & Instructional Related Services:				
0011	Instruction	10,620,037	11,026,019	10,691,449	334,570
0012	Instructional Resources and Media Services	613,021	657,021	618,141	38,880
0013	Curriculum and Staff Development	420,052	446,077	378,271	67,806
	Total Instruction & Instr. Related Services	11,653,110	12,129,117	11,687,861	441,256
	Instructional and School Leadership:				
0021	Instructional Leadership	92,860	110,860	101,302	9,558
0023	School Leadership	1,332,321	1,373,321	1,309,438	63,883
	Total Instructional & School Leadership	1,425,181	1,484,181	1,410,740	73,441
	Support Services - Student (Pupil):				
0031	Guidance, Counseling and Evaluation Services	415,160	448,160	396,697	51,463
0033	Health Services	298,249	308,249	288,141	20,108
0034	Student (Pupil) Transportation	816,468	1,359,267	1,197,676	161,591
0036	Cocurricular/Extracurricular Activities	1,508,317	1,835,655	1,580,936	254,719
	Total Support Services - Student (Pupil)	3,038,194	3,951,331	3,463,450	487,881
	Administrative Support Services:				
0041	General Administration	595,733	700,733	696,681	4,052
	Total Administrative Support Services	595,733	700,733	696,681	4,052
	Support Services - Nonstudent Based:				
0051	Plant Maintenance and Operations	2,011,762	2,917,118	2,821,382	95,736
0052	Security and Monitoring Services	177,610	166,095	152,088	14,007
0053	Data Processing Services	78,800	143,800	123,704	20,096
	Total Support Services - Nonstudent Based	2,268,172	3,227,013	3,097,174	129,839
	Ancillary Services:				
0061	Community Services	67,230	75,230	53,350	21,880
	Total Ancillary Services	67,230	75,230	53,350	21,880
	Debt Service:				
0071	Principal on Long-Term Debt	322,000	322,000	326,211	(4,211)
0072	Interest on Long-Term Debt	61,000	61,000	49,583	11,417
0073	Bond Issuance Costs and Fees	600	600	600	--
	Total Debt Service	383,600	383,600	376,394	7,206
	Capital Outlay:				
0081	Capital Outlay	10,000	--	--	--
	Total Capital Outlay	10,000	--	--	--

GILMER INDEPENDENT SCHOOL DISTRICT

GENERAL FUND

BUDGETARY COMPARISON SCHEDULE

FOR THE YEAR ENDED AUGUST 31, 2017

EXHIBIT G-1

Page 2 of 2

Data Control Codes		1	2	3	Variance with Final Budget Positive (Negative)
		Budgeted Amounts		Actual	
		Original	Final		
	Intergovernmental Charges:				
0093	Alternative Education/Special Education Services	584,000	574,000	570,822	3,178
0099	Property Appraisal Services	225,000	225,000	216,983	8,017
	Total Intergovernmental Charges	809,000	799,000	787,805	11,195
6030	Total Expenditures	20,250,220	22,750,205	21,573,455	1,176,750
1100	Excess (Deficiency) of Revenues Over (Under)				
1100	Expenditures	--	(1,238,206)	(829,169)	409,037
	Other Financing Sources (Uses):				
7914	Issuance of Non-Current Debt	--	633,992	634,192	200
7915	Transfers In	--	--	6,056	6,056
8911	Transfers Out	--	(773,000)	(755,000)	18,000
7080	Total Other Financing Sources and (Uses)	--	(139,008)	(114,752)	24,256
1200	Net Change in Fund Balance	--	(1,377,214)	(943,921)	433,293
0100	Fund Balance - Beginning	4,580,379	4,580,379	4,580,379	--
3000	Fund Balance - Ending	<u>\$ 4,580,379</u>	<u>\$ 3,203,165</u>	<u>\$ 3,636,458</u>	<u>\$ 433,293</u>

GILMER INDEPENDENT SCHOOL DISTRICT
SCHEDULE OF THE DISTRICT'S PROPORTIONATE
SHARE OF THE NET PENSION LIABILITY
TEACHER RETIREMENT SYSTEM
LAST TEN YEARS *

	Measurement Year Ended August 31,									
	2016	2015	2014	2013	2012	2011	2010	2009	2008	2007
District's proportion of the net pension liability (asset)	0.013567%	0.013415%	0.009343%	--	--	--	--	--	--	--
District's proportionate share of the net pension liability (asset)	\$ 5,126,756	\$ 4,742,024	\$ 2,495,645	\$ --	\$ --	\$ --	\$ --	\$ --	\$ --	\$ --
State's proportionate share of the net pension liability (asset) associated with the District	9,315,677	8,956,467	7,484,191	--	--	--	--	--	--	--
Total	<u>\$ 14,442,433</u>	<u>\$ 13,698,491</u>	<u>\$ 9,979,836</u>	<u>\$ --</u>	<u>\$ --</u>	<u>\$ --</u>	<u>\$ --</u>	<u>\$ --</u>	<u>\$ --</u>	<u>\$ --</u>
District's covered-employee payroll	\$ 14,629,518	\$ 13,896,563	\$ 13,385,515	\$ --	\$ --	\$ --	\$ --	\$ --	\$ --	\$ --
District's proportionate share of the net pension liability (asset) as a percentage of its covered-employee payroll	35.04%	34.12%	18.64%	--	--	--	--	--	--	--
Plan fiduciary net position as a percentage of the total pension liability	78.00%	78.43%	83.25%	--	--	--	--	--	--	--

Note: Only three years of data is presented in accordance with GASB Statement No. 68, Paragraph 138. "The information for all periods for the 10-year schedules that are required to be presented as required supplementary information may not be available initially. In these cases, during the transition period, that information should be presented for as many years as available. The schedules should not include information that is not measured in accordance with the requirements of this Statement."

GILMER INDEPENDENT SCHOOL DISTRICT
SCHEDULE OF DISTRICT CONTRIBUTIONS
TEACHER RETIREMENT SYSTEM
LAST TEN FISCAL YEARS *

	Fiscal Year Ended August 31,									
	2017	2016	2015	2014	2013	2012	2011	2010	2009	2008
Contractually required contribution	\$ 452,843	\$ 431,057	\$ 397,250	\$ --	\$ --	\$ --	\$ --	\$ --	\$ --	\$ --
Contributions in relation to the contractually required contribution	(452,843)	(431,057)	(397,250)	--	--	--	--	--	--	--
Contribution deficiency (excess)	<u>\$ --</u>	<u>\$ --</u>	<u>\$ --</u>	<u>\$ --</u>	<u>\$ --</u>	<u>\$ --</u>	<u>\$ --</u>	<u>\$ --</u>	<u>\$ --</u>	<u>\$ --</u>
District's covered-employee payroll	\$ 14,958,587	\$ 14,629,578	\$ 13,896,563	\$ --	\$ --	\$ --	\$ --	\$ --	\$ --	\$ --
Contributions as a percentage of covered-employee payroll	3.03%	2.95%	2.86%	--	--	--	--	--	--	--

Note; Only three years of data is presented in accordance with GASB Statement No. 68, Paragraph 138. "The information for all periods for the 10-year schedules that are required to be presented as required supplementary information may not be available initially. In these cases, during the transition period, that information should be presented for as many years as are available. The schedules should not include information that is not measured in accordance with the requirements of this Statement."

GILMER INDEPENDENT SCHOOL DISTRICT

NOTES TO REQUIRED SUPPLEMENTARY INFORMATION FOR THE YEAR ENDED AUGUST 31, 2017

Budget

The official budget was prepared for adoption for the General Fund, Food Service Special Revenue Fund, and Debt Service Fund in accordance with accounting practices generally accepted in the United States of America. The following procedures are followed in establishing the budgetary data:

- a. Prior to August 21 of the preceding fiscal year, the District prepares a budget for the next succeeding fiscal year. The operating budget includes proposed expenditures and the means of financing them.
- b. A meeting of the Board is then called for the purpose of adopting the proposed budget after ten days' public notice of the meeting has been given.
- c. Prior to the beginning of the fiscal year, the budget is legally enacted through passage of a resolution by the Board.

Once a budget is approved, it can be amended at function and fund level only by approval of a majority of the members of the Board. Amendments are presented to the Board at its regular meetings.

Each amendment must have Board approval. Such amendments are made before the fact, are reflected in the official minutes of the Board and are not made after fiscal year end as required by law.

Each amendment is controlled by the Director of Finance and Business Services at the revenue and expenditure function/object level. Budgeted amounts are as amended by the Board. All budget appropriations lapse at year end.

Encumbrances for goods or purchased services are documented by purchase orders or contracts. Under Texas law, appropriations lapse at August 31, and encumbrances outstanding at that time are to be either cancelled or appropriately provided for in the subsequent year's budget. There were no end-of-year outstanding encumbrances that were provided for in the subsequent year's budget.

Defined Benefit Pension Plan

Changes of benefit terms

There were no changes of benefit terms that affected measurement of the total pension liability during the measurement period.

Changes of assumptions

There were no changes of assumptions or other inputs that affected measurement of the total pension liability during the measurement period.

Combining Statements and Budget Comparisons as Supplementary Information

This supplementary information includes financial statements and schedules not required by the Governmental Accounting Standards Board, nor a part of the basic financial statements, but are presented for purposes of additional analysis.

This page is left blank intentionally.

COMBINING STATEMENTS AND BUDGET COMPARISONS AS SUPPLEMENTARY INFORMATION - NONMAJOR GOVERNMENTAL FUNDS

SPECIAL REVENUE FUNDS

ESEA Title I Improving Basic Programs Fund

Used to account on a project basis for federal funds allocated to programs for economically disadvantaged children.

IDEA-B Formula Program Fund

Used to account on a project basis for federal funds to operate educational programs for children with disabilities.

IDEA-B Preschool Program Fund

Used to account on a project basis for federal funds granted for preschool children with disabilities.

National School Breakfast/Lunch Program Fund

Used to account for local, state and federal funds used to operate the District's food service program.

Summer Feeding Program Fund

Used to account for federal funds used to operate the District's summer feeding program.

Career and Technology - Basic Grant Program Fund

Used to account on a project basis for federal funds to provide career and technology education.

ESEA Title II Part A - Teacher & Principal Training and Recruitment Program Fund

Used to account on a project basis for federal funds to increase student academic achievement.

English Language Acquisition and Enhancement Program Fund

Used to account on a project basis for federal funds granted to improve the education of limited English proficient children.

Summer School LEP Fund

Used to account on a project basis for state funds to assist students with limited English proficiency and prepare them to be successful in kindergarten and first grade.

Advanced Placement Incentives Program Fund

Used to account on a project basis for state funds allocated for teacher training.

State Textbook Fund

Used to account for state funds allocated for instructional materials.

Pre-Kindergarten Grant Fund

Used to account for state funds provided to improve the quality of the District's pre-kindergarten programs.

Campus Activity Funds

Used to account for transactions related to campus activity funds.

DEBT SERVICE FUND

Used to account for debt transactions for which a tax has been levied.

GILMER INDEPENDENT SCHOOL DISTRICT

COMBINING BALANCE SHEET

NONMAJOR GOVERNMENTAL FUNDS

AUGUST 31, 2017

Data Control Codes		Special Revenue Funds	Debt Service Fund	Total Nonmajor Governmental Funds (See Exhibit C-1)
ASSETS:				
1110	Cash and Cash Equivalents	\$ 353,917	\$ 16,359	\$ 370,276
1120	Current Investments	--	920	920
1225	Taxes Receivable, Net	--	104,070	104,070
1240	Due from Other Governments	316,133	--	316,133
1300	Inventories	43,165	--	43,165
1000	Total Assets	<u>713,215</u>	<u>121,349</u>	<u>834,564</u>
LIABILITIES:				
Current Liabilities:				
2110	Accounts Payable	\$ 106,367	\$ --	\$ 106,367
2160	Accrued Wages Payable	59,086	--	59,086
2170	Due to Other Funds	98,011	--	98,011
2300	Unearned Revenue	83,628	307	83,935
2000	Total Liabilities	<u>347,092</u>	<u>307</u>	<u>347,399</u>
DEFERRED INFLOWS OF RESOURCES:				
Deferred Property Taxes				
		--	104,070	104,070
2600	Total Deferred Inflows of Resources	<u>--</u>	<u>104,070</u>	<u>104,070</u>
FUND BALANCES:				
Nonspendable Fund Balances:				
3410	Inventories	19,269	--	19,269
Restricted Fund Balances:				
3450	Federal/State Funds Grant Restrictions	283,443	--	283,443
3480	Retirement of Long-Term Debt	--	16,972	16,972
Committed Fund Balances:				
3545	Other Committed Fund Balance	63,411	--	63,411
3000	Total Fund Balances	<u>366,123</u>	<u>16,972</u>	<u>383,095</u>
Total Liabilities, Deferred Inflow				
4000	of Resources and Fund Balances	<u>\$ 713,215</u>	<u>\$ 121,349</u>	<u>\$ 834,564</u>

GILMER INDEPENDENT SCHOOL DISTRICT
 COMBINING STATEMENT OF REVENUES, EXPENDITURES,
 AND CHANGES IN FUND BALANCES
 NONMAJOR GOVERNMENTAL FUNDS
 FOR THE YEAR ENDED AUGUST 31, 2017

Data Control Codes	Special Revenue Funds	Debt Service Fund	Total Nonmajor Governmental Funds (See Exhibit C-2)
REVENUES:			
5700 Local and Intermediate Sources	\$ 404,113	\$ 410,939	\$ 815,052
5800 State Program Revenues	394,889	30,069	424,958
5900 Federal Program Revenues	2,223,157	--	2,223,157
5020 Total Revenues	<u>3,022,159</u>	<u>441,008</u>	<u>3,463,167</u>
EXPENDITURES:			
Current:			
0011 Instruction	1,290,288	--	1,290,288
0013 Curriculum and Staff Development	136,575	--	136,575
0023 School Leadership	5,171	--	5,171
0031 Guidance, Counseling, & Evaluation Services	153,574	--	153,574
0035 Food Service	1,387,325	--	1,387,325
0051 Facilities Maintenance and Operations	20,881	--	20,881
0061 Community Services	10,303	--	10,303
0071 Principal on Long-term Debt	44,878	720,000	764,878
0072 Interest on Long-term Debt	--	474,163	474,163
0073 Bond Issuance Costs and Fees	--	1,950	1,950
6030 Total Expenditures	<u>3,048,995</u>	<u>1,196,113</u>	<u>4,245,108</u>
1100 Excess (Deficiency) of Revenues Over (Under)			
1100 Expenditures	<u>(26,836)</u>	<u>(755,105)</u>	<u>(781,941)</u>
Other Financing Sources and (Uses):			
7915 Transfers In	--	755,000	755,000
8911 Transfers Out	(6,056)	--	(6,056)
7080 Total Other Financing Sources and (Uses)	<u>(6,056)</u>	<u>755,000</u>	<u>748,944</u>
1200 Net Change in Fund Balances	<u>(32,892)</u>	<u>(105)</u>	<u>(32,997)</u>
0100 Fund Balances - Beginning	399,015	17,077	416,092
3000 Fund Balances - Ending	<u>\$ 366,123</u>	<u>\$ 16,972</u>	<u>\$ 383,095</u>

GILMER INDEPENDENT SCHOOL DISTRICT

COMBINING BALANCE SHEET

NONMAJOR SPECIAL REVENUE FUNDS

AUGUST 31, 2017

Data Control Codes		211 ESEA Title I Improving Basic Programs	224 IDEA-B Formula	225 IDEA-B Preschool Grant	240 National School Breakfast/Lunch Program
ASSETS:					
1110	Cash and Cash Equivalents	\$ --	\$ --	\$ --	\$ 278,381
1240	Due from Other Governments	8,664	44,649	4,704	23,280
1300	Inventories	--	--	--	43,165
1000	Total Assets	<u>\$ 8,664</u>	<u>\$ 44,649</u>	<u>\$ 4,704</u>	<u>\$ 344,826</u>
LIABILITIES:					
Current Liabilities:					
2110	Accounts Payable	\$ --	\$ --	\$ --	\$ 32
2160	Accrued Wages Payable	6,181	22,777	3,703	26,425
2170	Due to Other Funds	2,483	21,872	1,001	--
2300	Unearned Revenue	--	--	--	23,896
2000	Total Liabilities	<u>8,664</u>	<u>44,649</u>	<u>4,704</u>	<u>50,353</u>
FUND BALANCES:					
Nonspendable Fund Balances:					
3410	Inventories	--	--	--	19,269
Restricted Fund Balances:					
3450	Federal/State Funds Grant Restrictions	--	--	--	275,204
Committed Fund Balances:					
3545	Other Committed Fund Balance	--	--	--	--
3000	Total Fund Balances	<u>--</u>	<u>--</u>	<u>--</u>	<u>294,473</u>
4000	Total Liabilities and Fund Balances	<u>\$ 8,664</u>	<u>\$ 44,649</u>	<u>\$ 4,704</u>	<u>\$ 344,826</u>

242 Summer Feeding Program	244 Career and Tech Basic Grant	255 ESEA Title II Training & Recruiting	263 English Language Acquisition and Enhancement	289 Summer School LEP
\$ 8,275	\$ --	\$ --	\$ --	\$ --
--	--	2,270	623	--
--	--	--	--	--
<u>\$ 8,275</u>	<u>\$ --</u>	<u>\$ 2,270</u>	<u>\$ 623</u>	<u>\$ --</u>
\$ 36	\$ --	\$ 298	\$ 623	\$ --
--	--	--	--	--
--	--	1,972	--	--
--	--	--	--	--
<u>36</u>	<u>--</u>	<u>2,270</u>	<u>623</u>	<u>--</u>
--	--	--	--	--
8,239	--	--	--	--
--	--	--	--	--
<u>8,239</u>	<u>--</u>	<u>--</u>	<u>--</u>	<u>--</u>
<u>\$ 8,275</u>	<u>\$ --</u>	<u>\$ 2,270</u>	<u>\$ 623</u>	<u>\$ --</u>

GILMER INDEPENDENT SCHOOL DISTRICT

COMBINING BALANCE SHEET

NONMAJOR SPECIAL REVENUE FUNDS

AUGUST 31, 2017

Data Control Codes		397 Advanced Placement Incentives	410 State Textbook Fund
	ASSETS:		
1110	Cash and Cash Equivalents	\$ --	\$ --
1240	Due from Other Governments	--	231,943
1300	Inventories	--	--
1000	Total Assets	<u>\$ --</u>	<u>\$ 231,943</u>
	LIABILITIES:		
	Current Liabilities:		
2110	Accounts Payable	\$ --	\$ 105,378
2160	Accrued Wages Payable	--	--
2170	Due to Other Funds	--	70,683
2300	Unearned Revenue	--	55,882
2000	Total Liabilities	<u>--</u>	<u>231,943</u>
	FUND BALANCES:		
	Nonspendable Fund Balances:		
3410	Inventories	--	--
	Restricted Fund Balances:		
3450	Federal/State Funds Grant Restrictions	--	--
	Committed Fund Balances:		
3545	Other Committed Fund Balance	--	--
3000	Total Fund Balances	<u>--</u>	<u>--</u>
4000	Total Liabilities and Fund Balances	<u>\$ --</u>	<u>\$ 231,943</u>

429 Pre-Kindergarten State Grant Fund	461 Campus Activity Funds	Total Nonmajor Special Revenue Funds (See Exhibit H-1)
\$ 3,850	\$ 63,411	\$ 353,917
--	--	316,133
--	--	43,165
<u>\$ 3,850</u>	<u>\$ 63,411</u>	<u>\$ 713,215</u>
\$ --	\$ --	\$ 106,367
--	--	59,086
--	--	98,011
3,850	--	83,628
<u>3,850</u>	<u>--</u>	<u>347,092</u>
--	--	19,269
--	--	283,443
--	63,411	63,411
<u>--</u>	<u>63,411</u>	<u>366,123</u>
<u>\$ 3,850</u>	<u>\$ 63,411</u>	<u>\$ 713,215</u>

GILMER INDEPENDENT SCHOOL DISTRICT
COMBINING STATEMENT OF REVENUES, EXPENDITURES,
AND CHANGES IN FUND BALANCES
NONMAJOR SPECIAL REVENUE FUNDS
FOR THE YEAR ENDED AUGUST 31, 2017

Data Control Codes		211 ESEA Title I Improving Basic Programs	224 IDEA-B Formula	225 IDEA-B Preschool Grant	240 National School Breakfast/Lunch Program
REVENUES:					
5700	Local and Intermediate Sources	\$ --	\$ --	\$ --	\$ 201,708
5800	State Program Revenues	--	--	--	16,772
5900	Federal Program Revenues	551,747	271,306	58,947	1,119,808
5020	Total Revenues	<u>551,747</u>	<u>271,306</u>	<u>58,947</u>	<u>1,338,288</u>
EXPENDITURES:					
Current:					
0011	Instruction	388,487	266,989	58,373	--
0013	Curriculum and Staff Development	1,987	--	--	--
0023	School Leadership	--	--	--	--
0031	Guidance, Counseling, & Evaluation Services	153,574	--	--	--
0035	Food Service	--	--	--	1,347,784
0051	Facilities Maintenance and Operations	--	--	--	20,881
0061	Community Services	7,699	--	--	--
0071	Principal on Long-term Debt	--	--	--	--
6030	Total Expenditures	<u>551,747</u>	<u>266,989</u>	<u>58,373</u>	<u>1,368,665</u>
1100	Excess (Deficiency) of Revenues Over (Under)				
1100	Expenditures	<u>--</u>	<u>4,317</u>	<u>574</u>	<u>(30,377)</u>
Other Financing Sources and (Uses):					
8911	Transfers Out	<u>--</u>	<u>(4,317)</u>	<u>(574)</u>	<u>--</u>
7080	Total Other Financing Sources and (Uses)	<u>--</u>	<u>(4,317)</u>	<u>(574)</u>	<u>--</u>
1200	Net Change in Fund Balances	--	--	--	(30,377)
0100	Fund Balances - Beginning	--	--	--	324,850
3000	Fund Balances - Ending	<u>\$ --</u>	<u>\$ --</u>	<u>\$ --</u>	<u>\$ 294,473</u>

242 Summer Feeding Program	244 Career and Tech Basic Grant	255 ESEA Title II Training & Recruiting	263 English Language Acquisition and Enhancement	289 Summer School LEP
\$ 537	\$ --	\$ --	\$ --	\$ --
--	--	--	--	--
37,485	30,547	133,053	19,099	1,165
38,022	30,547	133,053	19,099	1,165
--	30,547	--	11,139	--
--	--	127,882	5,356	--
--	--	5,171	--	--
--	--	--	--	--
39,541	--	--	--	--
--	--	--	--	--
--	--	--	2,604	--
--	--	--	--	--
39,541	30,547	133,053	19,099	--
(1,519)	--	--	--	1,165
--	--	--	--	(1,165)
--	--	--	--	(1,165)
(1,519)	--	--	--	--
9,758	--	--	--	--
\$ 8,239	\$ --	\$ --	\$ --	\$ --

GILMER INDEPENDENT SCHOOL DISTRICT
COMBINING STATEMENT OF REVENUES, EXPENDITURES,
AND CHANGES IN FUND BALANCES
NONMAJOR SPECIAL REVENUE FUNDS
FOR THE YEAR ENDED AUGUST 31, 2017

Data Control Codes		397 Advanced Placement Incentives	410 State Textbook Fund
REVENUES:			
5700	Local and Intermediate Sources	\$ --	\$ --
5800	State Program Revenues	1,350	300,251
5900	Federal Program Revenues	--	--
5020	Total Revenues	<u>1,350</u>	<u>300,251</u>
EXPENDITURES:			
Current:			
0011	Instruction	--	255,373
0013	Curriculum and Staff Development	1,350	--
0023	School Leadership	--	--
0031	Guidance, Counseling, & Evaluation Services	--	--
0035	Food Service	--	--
0051	Facilities Maintenance and Operations	--	--
0061	Community Services	--	--
0071	Principal on Long-term Debt	--	44,878
6030	Total Expenditures	<u>1,350</u>	<u>300,251</u>
1100	Excess (Deficiency) of Revenues Over (Under)		
1100	Expenditures	<u>--</u>	<u>--</u>
Other Financing Sources and (Uses):			
8911	Transfers Out	<u>--</u>	<u>--</u>
7080	Total Other Financing Sources and (Uses)	<u>--</u>	<u>--</u>
1200	Net Change in Fund Balances	<u>--</u>	<u>--</u>
0100	Fund Balances - Beginning	<u>--</u>	<u>--</u>
3000	Fund Balances - Ending	<u>\$ --</u>	<u>\$ --</u>

429 Pre-Kindergarten State Grant Fund	461 Campus Activity Funds	Total Nonmajor Special Revenue Funds (See Exhibit H-2)
\$ --	\$ 201,868	\$ 404,113
76,516	--	394,889
--	--	2,223,157
<u>76,516</u>	<u>201,868</u>	<u>3,022,159</u>
76,516	202,864	1,290,288
--	--	136,575
--	--	5,171
--	--	153,574
--	--	1,387,325
--	--	20,881
--	--	10,303
--	--	44,878
<u>76,516</u>	<u>202,864</u>	<u>3,048,995</u>
--	(996)	(26,836)
--	--	(6,056)
--	--	(6,056)
--	(996)	(32,892)
--	64,407	399,015
<u>\$ --</u>	<u>\$ 63,411</u>	<u>\$ 366,123</u>

GILMER INDEPENDENT SCHOOL DISTRICT

NATIONAL SCHOOL BREAKFAST AND LUNCH PROGRAM

BUDGETARY COMPARISON SCHEDULE

FOR THE YEAR ENDED AUGUST 31, 2017

EXHIBIT H-5

Data Control Codes		1	2	3	Variance with Final Budget Positive (Negative)
		Budgeted Amounts			
		Original	Final	Actual	
REVENUES:					
5700	Local and Intermediate Sources	\$ 231,000	\$ 243,000	\$ 201,708	\$ (41,292)
5800	State Program Revenues	7,000	7,000	16,772	9,772
5900	Federal Program Revenues	988,000	1,084,000	1,119,808	35,808
5020	Total Revenues	1,226,000	1,334,000	1,338,288	4,288
EXPENDITURES:					
Current:					
	Support Services - Student (Pupil):				
0035	Food Services	1,198,150	1,377,150	1,347,784	29,366
	Total Support Services - Student (Pupil)	1,198,150	1,377,150	1,347,784	29,366
	Support Services - Nonstudent Based:				
0051	Plant Maintenance and Operations	27,850	39,850	20,881	18,969
	Total Support Services - Nonstudent Based	27,850	39,850	20,881	18,969
6030	Total Expenditures	1,226,000	1,417,000	1,368,665	48,335
1100	Excess (Deficiency) of Revenues Over (Under)				
1100	Expenditures	--	(83,000)	(30,377)	52,623
1200	Net Change in Fund Balance	--	(83,000)	(30,377)	52,623
0100	Fund Balance - Beginning	324,850	324,850	324,850	--
3000	Fund Balance - Ending	\$ 324,850	\$ 241,850	\$ 294,473	\$ 52,623

GILMER INDEPENDENT SCHOOL DISTRICT

EXHIBIT H-6

DEBT SERVICE FUND
BUDGETARY COMPARISON SCHEDULE
FOR THE YEAR ENDED AUGUST 31, 2017

Data Control Codes		1	2	3	Variance with Final Budget Positive (Negative)
		Budgeted Amounts		Actual	
		Original	Final		
	REVENUES:				
5700	Local and Intermediate Sources	\$ 422,819	\$ 422,819	\$ 410,939	\$ (11,880)
5800	State Program Revenues	--	5,000	30,069	25,069
5020	Total Revenues	<u>422,819</u>	<u>427,819</u>	<u>441,008</u>	<u>13,189</u>
	EXPENDITURES:				
	Debt Service:				
0071	Principal on Long-Term Debt	720,000	720,000	720,000	--
0072	Interest on Long-Term Debt	474,164	474,164	474,163	1
0073	Bond Issuance Costs and Fees	1,655	6,655	1,950	4,705
	Total Debt Service	<u>1,195,819</u>	<u>1,200,819</u>	<u>1,196,113</u>	<u>4,706</u>
6030	Total Expenditures	<u>1,195,819</u>	<u>1,200,819</u>	<u>1,196,113</u>	<u>4,706</u>
1100	Excess (Deficiency) of Revenues Over (Under)				
1100	Expenditures	<u>(773,000)</u>	<u>(773,000)</u>	<u>(755,105)</u>	<u>17,895</u>
	Other Financing Sources (Uses):				
7915	Transfers In	<u>773,000</u>	<u>773,000</u>	<u>755,000</u>	<u>(18,000)</u>
7080	Total Other Financing Sources and (Uses)	<u>773,000</u>	<u>773,000</u>	<u>755,000</u>	<u>(18,000)</u>
1200	Net Change in Fund Balance	--	--	(105)	(105)
0100	Fund Balance - Beginning	17,077	17,077	17,077	--
3000	Fund Balance - Ending	<u>\$ 17,077</u>	<u>\$ 17,077</u>	<u>\$ 16,972</u>	<u>\$ (105)</u>

This page is left blank intentionally.

**COMBINING STATEMENTS AS SUPPLEMENTARY INFORMATION
ENTERPRISE FUNDS**

ENTERPRISE FUNDS

Stadium Enterprise Fund:

Used to account for merchandise sales and parking at Buckeye Stadium.

District Enterprise Fund:

Used to account for various enterprise activities.

GILMER INDEPENDENT SCHOOL DISTRICT

COMBINING STATEMENT OF NET POSITION

NONMAJOR ENTERPRISE FUNDS

AUGUST 31, 2017

Data Control Codes		Enterprise Fund Stadium Enterprise Fund	Enterprise Fund District Enterprise Fund	Total Nonmajor Enterprise Funds (See Exhibit D-1)
	ASSETS:			
	Current Assets:			
1110	Cash and Cash Equivalents	\$ 11,915	\$ 12,734	\$ 24,649
	Total Current Assets	11,915	12,734	24,649
1000	Total Assets	\$ 11,915	\$ 12,734	\$ 24,649
	LIABILITIES:			
	Current Liabilities:			
2110	Accounts Payable	\$ --	\$ 418	\$ 418
2300	Unearned Revenues	5,490	--	5,490
	Total Current Liabilities	5,490	418	5,908
2000	Total Liabilities	5,490	418	5,908
	NET POSITION:			
3900	Unrestricted	6,425	12,316	18,741
3000	Total Net Position	\$ 6,425	\$ 12,316	\$ 18,741

GILMER INDEPENDENT SCHOOL DISTRICT

COMBINING STATEMENT OF REVENUES, EXPENSES,
AND CHANGES IN FUND NET POSITION
NONMAJOR ENTERPRISE FUNDS
FOR THE YEAR ENDED AUGUST 31, 2017

Data Control Codes		Enterprise Fund Stadium Enterprise Fund	Enterprise Fund District Enterprise Fund	Total Nonmajor Enterprise Funds (See Exhibit D-2)
	OPERATING REVENUES:			
5700	Local and Intermediate Sources	\$ 30	\$ 6,559	\$ 6,589
5020	Total Revenues	<u>30</u>	<u>6,559</u>	<u>6,589</u>
	OPERATING EXPENSES:			
6400	Other Operating Costs	--	1,961	1,961
6030	Total Expenses	<u>--</u>	<u>1,961</u>	<u>1,961</u>
1300	Change in Net Position	30	4,598	4,628
0100	Total Net Position - Beginning	6,395	7,718	14,113
3300	Total Net Position - Ending	<u>\$ 6,425</u>	<u>\$ 12,316</u>	<u>\$ 18,741</u>

GILMER INDEPENDENT SCHOOL DISTRICT

COMBINING STATEMENT OF CASH FLOWS

NONMAJOR ENTERPRISE FUNDS

FOR THE YEAR ENDED AUGUST 31, 2017

	748 Stadium Enterprise Fund	749 District Enterprise Fund	Total Nonmajor Enterprise Funds (See Exhibit D-3)
Cash Flows from Operating Activities:			
Cash Received from Customers	\$ 3,630	\$ 6,559	\$ 10,189
Cash Payments to Suppliers for Goods and Services	--	(2,360)	(2,360)
Net Cash Provided (Used) by Operating Activities	<u>3,630</u>	<u>4,199</u>	<u>7,829</u>
Cash Flows from Non-capital Financing Activities:			
Transfers From (To) Other Funds	--	--	--
Net Cash Provided (Used) by Non-capital Financing Activities	<u>--</u>	<u>--</u>	<u>--</u>
Cash Flows from Capital and Related Financing Activities:			
Contributed Capital	--	--	--
Net Cash Provided (Used) for Capital and Related Financing Activities	<u>--</u>	<u>--</u>	<u>--</u>
Cash Flows from Investing Activities:			
Interest and Dividends on Investments	--	--	--
Net Cash Provided (Used) for Investing Activities	<u>--</u>	<u>--</u>	<u>--</u>
Net Increase (Decrease) in Cash and Cash Equivalents	3,630	4,199	7,829
Cash and Cash Equivalents at Beginning of Year	8,285	8,535	16,820
Cash and Cash Equivalents at End of Year	<u>\$ 11,915</u>	<u>\$ 12,734</u>	<u>\$ 24,649</u>
Reconciliation of Operating Income to Net Cash Provided by Operating Activities:			
Operating Income (Loss)	\$ 30	\$ 4,598	\$ 4,628
Adjustments to Reconcile Operating Income to Net Change in Assets and Liabilities:			
Increase (Decrease) in Accounts Payable	--	(399)	(399)
Increase (Decrease) in Unearned Revenue	3,600	--	3,600
Total Adjustments	<u>3,600</u>	<u>(399)</u>	<u>3,201</u>
Net Cash Provided (Used) by Operating Activities	<u>\$ 3,630</u>	<u>\$ 4,199</u>	<u>\$ 7,829</u>

**COMBINING STATEMENTS AS SUPPLEMENTARY INFORMATION
FIDUCIARY FUNDS**

PRIVATE PURPOSE TRUST FUNDS

Scholarship Funds:

Used to account for donations restricted for scholarships.

AGENCY FUNDS

Student Activity Fund:

Used to account for monies belonging to student groups.

GILMER INDEPENDENT SCHOOL DISTRICT

COMBINING STATEMENT OF FIDUCIARY NET POSITION

PRIVATE-PURPOSE TRUST FUNDS

AUGUST 31, 2017

Data Control Codes	809 Expendable Scholarship Fund	836 Nonexpendable Scholarship Fund	Total Private- Purpose Trust Funds (See Exhibit E-1)
ASSETS:			
1110 Cash and Cash Equivalents	\$ 35,081	\$ 87,684	\$ 122,765
1250 Accrued Interest	--	10	10
1800 Restricted Assets	--	506,987	506,987
1000 Total Assets	<u>35,081</u>	<u>594,681</u>	<u>629,762</u>
LIABILITIES:			
2000 Total Liabilities	<u>--</u>	<u>--</u>	<u>--</u>
NET POSITION:			
3800 Held in Trust	\$ 35,081	\$ 594,681	\$ 629,762
3000 Total Net Position	<u>\$ 35,081</u>	<u>\$ 594,681</u>	<u>\$ 629,762</u>

GILMER INDEPENDENT SCHOOL DISTRICT

COMBINING STATEMENT OF CHANGES IN FIDUCIARY NET POSITION

ALL PRIVATE-PURPOSE TRUST FUNDS

FOR THE YEAR ENDED AUGUST 31, 2017

	809 Expendable Scholarship Fund	836 Nonexpendable Scholarship Fund	Total Private-Purpose Trust Funds (See Exhibit E-2)
Additions:			
Gifts and Bequests	\$ 14,000	\$ --	\$ 14,000
Net Increase in Fair Value of Investments	--	73,159	73,159
Total Additions	<u>14,000</u>	<u>73,159</u>	<u>87,159</u>
Deductions:			
Scholarship Awards	<u>9,500</u>	<u>9,050</u>	<u>18,550</u>
Total Deductions	<u>9,500</u>	<u>9,050</u>	<u>18,550</u>
Change in Net Position	4,500	64,109	68,609
Net Position-Beginning of the Year	<u>30,581</u>	<u>530,572</u>	<u>561,153</u>
Net Position-End of the Year	<u>\$ 35,081</u>	<u>\$ 594,681</u>	<u>\$ 629,762</u>

GILMER INDEPENDENT SCHOOL DISTRICT**EXHIBIT H-12**

COMBINING STATEMENT OF CHANGES IN ASSETS AND LIABILITIES

ALL AGENCY FUNDS

YEAR ENDED AUGUST 31, 2017

Data Control Codes		97 Balance September 1, 2016	5030 Additions	6050 Deductions	98 Balance August 31, 2017
<u>STUDENT ACTIVITIES:</u>					
ASSETS					
	Cash & Temporary Investments	\$ 59,887	\$ 193,654	\$ 189,440	\$ 64,101
	Total Assets	<u>\$ 59,887</u>	<u>\$ 193,654</u>	<u>\$ 189,440</u>	<u>\$ 64,101</u>
LIABILITIES					
	Due to Student Groups	\$ 59,887	\$ 193,654	\$ 189,440	\$ 64,101
	Total Liabilities	<u>\$ 59,887</u>	<u>\$ 193,654</u>	<u>\$ 189,440</u>	<u>\$ 64,101</u>
<u>CLEARING ACCOUNTS:</u>					
ASSETS					
	Cash	\$ --	\$ --	\$ --	\$ --
	Total Assets	<u>\$ --</u>	<u>\$ --</u>	<u>\$ --</u>	<u>\$ --</u>
LIABILITIES					
	Accounts Payable	\$ --	\$ --	\$ --	\$ --
	Total Liabilities	<u>\$ --</u>	<u>\$ --</u>	<u>\$ --</u>	<u>\$ --</u>
<u>TOTAL AGENCY FUNDS:</u>					
ASSETS					
1110	Cash & Temporary Investments	\$ 59,887	\$ 193,654	\$ 189,440	\$ 64,101
1000	Total Assets	<u>\$ 59,887</u>	<u>\$ 193,654</u>	<u>\$ 189,440</u>	<u>\$ 64,101</u>
LIABILITIES					
2110	Accounts Payable	\$ --	\$ --	\$ --	\$ --
2190	Due to Student Groups	59,887	193,654	189,440	64,101
2000	Total Liabilities	<u>\$ 59,887</u>	<u>\$ 193,654</u>	<u>\$ 189,440</u>	<u>\$ 64,101</u>

Other Supplementary Information

This section includes financial information and disclosures not required by the Governmental Accounting Standards Board and not considered a part of the basic financial statements. It may, however, include information which is required by other entities.

GILMER INDEPENDENT SCHOOL DISTRICTSCHEDULE OF DELINQUENT TAXES RECEIVABLE
FOR THE YEAR ENDED AUGUST 31, 2017

Year Ended August 31	1		2		3	
	Tax Rates				Assessed/Appraised Value For School Tax Purposes	
	Maintenance		Debt Service			
2008 and Prior Years	\$	Various	\$	Various	\$	Various
2009		1.04		.158		929,784,307
2010		1.04		.155		900,373,640
2011		1.04		.155		865,373,640
2012		1.04		.155		837,522,343
2013		1.04		.145		818,171,814
2014		1.17		.015		821,822,447
2015		1.17		.015		815,546,582
2016		1.17		.05		812,093,046
2017 (School Year Under Audit)		1.17		.05		817,884,213
1000 Totals						
9000 - Portion of Row 1000 for Taxes Paid into Tax Increment Zone Under Chapter 311, Tax Code						

10 Beginning Balance 9/1/16	20 Current Year's Total Levy	31 Maintenance Collections	32 Debt Service Collections	40 Entire Year's Adjustments	50 Ending Balance 8/31/17
\$ 545,841	\$ --	\$ 13,972	\$ 1,212	\$ (41,409)	\$ 489,248
101,648	--	3,590	545	(1,754)	95,759
105,045	--	3,868	577	(1,817)	98,783
122,381	--	8,000	1,192	(1,730)	111,459
145,269	--	7,432	1,108	(1,326)	135,403
191,287	--	18,183	2,535	1,091	171,660
212,891	--	36,647	470	1,615	177,389
253,389	--	46,665	598	438	206,564
363,856	--	115,753	4,947	(1,904)	241,252
--	9,978,187	9,040,068	386,328	(134,650)	417,141
<u>\$ 2,041,607</u>	<u>\$ 9,978,187</u>	<u>\$ 9,294,178</u>	<u>\$ 399,512</u>	<u>\$ (181,446)</u>	<u>\$ 2,144,658</u>
\$ --	\$ --	\$ --	\$ --	\$ --	\$ --

This page is left blank intentionally.

STATISTICAL SECTION

This part of the Gilmer Independent School District's comprehensive annual financial report presents detailed information as a context for understanding what the information in the financial statements, note disclosures, and required supplementary information says about the District's overall financial health.

Contents	Page
Financial Trends	89
These schedules contain trend information to help the reader understand how the District's financial performance and well-being have changed over time.	
Revenue Capacity	96
These schedules contain information to help the reader assess the factors affecting the District's ability to generate its property and sales taxes.	
Debt Capacity	100
These schedules present information to help the reader assess the affordability of the District's current levels of outstanding debt and the City's ability to issue additional debt in the future.	
Demographic and Economic Information	104
These schedules offer demographic and economic indicators to help the reader understand how the District's financial activities take place and to help make comparisons over time and with other governments.	
Operating Information	106
These schedules contain information about the District's operations and resources to help the reader understand how the District's financial information relates to the services the District provides and the activities it performs.	

Sources: Unless otherwise noted, the information in these schedules is derived from the comprehensive annual financial reports for the relevant year.

TABLE L-1

GILMER INDEPENDENT SCHOOL DISTRICT

NET POSITION BY COMPONENT

LAST TEN FISCAL YEARS

(ACCRUAL BASIS OF ACCOUNTING)

	2008	2009	2010	2011	2012	2013	2014	2015	2016	2017
Governmental Activities										
Net Investment in Capital Assets	\$ 5,058,654	\$ 4,956,262	\$ 4,707,946	\$ 4,334,871	\$ 4,478,567	\$ 4,116,186	\$ 3,736,220	\$ 3,648,628	\$ 3,562,106	\$ 3,396,570
Restricted	368,479	499,016	685,207	815,121	1,016,275	974,036	976,754	550,040	430,304	394,970
Unrestricted	5,858,934	6,049,336	6,093,850	6,357,446	6,885,907	6,359,173	6,376,760	3,525,853	3,361,415	1,820,123
Total Governmental Activities Net Position	<u>\$ 11,286,067</u>	<u>\$ 11,504,614</u>	<u>\$ 11,487,003</u>	<u>\$ 11,507,438</u>	<u>\$ 12,380,749</u>	<u>\$ 11,449,395</u>	<u>\$ 11,089,734</u>	<u>\$ 7,724,521</u>	<u>\$ 7,353,825</u>	<u>\$ 5,611,663</u>
Business-type Activities										
Net Investment in Capital Assets	\$ --	\$ --	\$ --	\$ --	\$ --	\$ --	\$ --	\$ --	\$ --	\$ --
Restricted	--	--	--	--	--	--	--	--	--	--
Unrestricted	30,640	52,752	57,504	--	659	319	3,860	8,864	14,113	18,741
Total Business-type Activities Net Position	<u>\$ 30,640</u>	<u>\$ 52,752</u>	<u>\$ 57,504</u>	<u>\$ --</u>	<u>\$ 659</u>	<u>\$ 319</u>	<u>\$ 3,860</u>	<u>\$ 8,864</u>	<u>\$ 14,113</u>	<u>\$ 18,741</u>
Primary Government										
Net Investment in Capital Assets	\$ 5,058,654	\$ 4,956,262	\$ 4,707,946	\$ 4,334,871	\$ 4,478,567	\$ 4,116,186	\$ 3,736,220	\$ 3,648,628	\$ 3,562,106	\$ 3,396,570
Restricted	368,479	499,016	685,207	815,121	1,016,275	974,036	976,754	550,040	430,304	394,970
Unrestricted	5,889,574	6,102,088	6,151,354	6,357,446	6,886,566	6,359,492	6,380,620	3,534,717	3,375,528	1,838,864
Total Primary Government Net Position	<u>\$ 11,316,707</u>	<u>\$ 11,557,366</u>	<u>\$ 11,544,507</u>	<u>\$ 11,507,438</u>	<u>\$ 12,381,408</u>	<u>\$ 11,449,714</u>	<u>\$ 11,093,594</u>	<u>\$ 7,733,385</u>	<u>\$ 7,367,938</u>	<u>\$ 5,630,404</u>

GILMER INDEPENDENT SCHOOL DISTRICT

EXPENSES, PROGRAM REVENUES, AND NET (EXPENSE)/REVENUE

LAST TEN FISCAL YEARS

(ACCRUAL BASIS OF ACCOUNTING)

	Fiscal Year									
	2008	2009	2010	2011	2012	2013	2014	2015	2016	2017
Expenses										
Governmental Activities:										
Instruction	\$ 11,754,210	\$ 11,720,854	\$ 12,166,537	\$ 12,031,023	\$ 10,733,017	\$ 11,221,210	\$ 11,601,708	\$ 12,293,741	\$ 13,094,165	\$ 12,990,439
Instructional Resources & Media Services	528,674	478,900	551,430	537,924	492,188	535,860	570,489	567,490	630,381	654,738
Curriculum & Staff Development	403,650	393,802	390,716	339,577	423,266	387,598	359,508	392,090	532,192	526,627
Instructional Leadership	102,324	190,538	90,056	93,974	118,318	120,580	120,839	127,791	132,257	103,365
School Leadership	1,039,877	1,119,142	1,223,977	1,208,550	1,132,347	1,108,607	1,141,048	1,173,749	1,335,619	1,360,708
Guidance, Counseling & Evaluation Svcs	578,289	423,733	573,084	595,872	556,745	553,735	559,268	590,040	559,221	577,596
Health Services	223,693	251,229	260,608	268,060	245,380	249,231	235,395	280,449	304,075	298,432
Student Transportation	1,021,042	931,179	1,043,486	963,365	946,659	896,344	948,823	908,504	1,025,890	1,124,026
Food Service	1,281,757	1,282,060	1,184,897	1,298,681	1,193,633	1,275,699	1,369,940	1,333,518	1,501,091	1,454,510
Cocurricular/Extracurricular Activities	1,277,447	1,377,725	1,514,425	1,567,235	1,527,287	1,616,955	1,682,231	1,883,495	1,856,576	1,922,286
General Administration	756,571	540,396	571,689	560,009	536,707	536,905	585,414	593,770	669,848	713,909
Plant Maintenance & Operations	2,226,999	2,132,917	2,408,220	2,132,444	1,984,173	2,064,893	2,307,541	2,275,093	2,392,234	2,858,517
Security & Monitoring Services	96,072	110,465	182,853	149,599	147,507	150,769	157,732	159,148	178,256	158,031
Data Processing Services	95,794	102,469	109,852	119,059	115,489	118,250	125,878	128,751	224,979	126,979
Community Services	23,346	33,775	32,490	38,212	31,688	30,699	35,251	57,171	57,639	65,053
Interest on Long-Term Debt	994,639	949,756	917,543	882,493	750,883	458,137	527,677	510,840	488,816	485,578
Bond Issuance Costs & Fees	6,034	6,034	6,034	6,034	24,332	201,680	75,539	2,181	2,101	2,550
Noncapital Asset Acquisitions	5,503	6,456	--	9,166	--	--	--	--	500	--
Alternative Education/Special Education	137,910	426,000	459,073	495,292	483,950	468,622	441,372	457,040	521,850	570,822
Property Appraisal Services	--	216,129	219,673	215,194	197,237	198,316	211,453	204,046	215,682	216,983
Total Governmental Activities Expenses	22,553,831	22,693,559	23,906,643	23,511,763	21,640,806	22,194,090	23,057,106	23,938,907	25,723,372	26,211,149
Business-type Activities										
Enterprise Activities	29,092	28,413	28,863	--	711	580	5,329	11,215	2,865	1,961
Total Business-type Activities Expenses	29,092	28,413	28,863	--	711	580	5,329	11,215	2,865	1,961
Total Primary Government Expenses	\$ 22,582,923	\$ 22,721,972	\$ 23,935,506	\$ 23,511,763	\$ 21,641,517	\$ 22,194,670	\$ 23,062,435	\$ 23,950,122	\$ 25,726,237	\$ 26,213,110

TABLE L-2
Page 2 of 2

	Fiscal Year									
	2008	2009	2010	2011	2012	2013	2014	2015	2016	2017
Program Revenues										
Governmental Activities:										
Charges for Services:										
Food Services	\$ 311,315	\$ 352,715	\$ 320,371	\$ 322,610	\$ 318,929	\$ 300,700	\$ 276,538	\$ 263,139	\$ 248,963	\$ 201,630
Extracurricular Activities	115,695	96,019	93,910	88,497	88,469	161,299	148,808	149,450	142,695	104,859
Other Activities	140,403	257,758	221,742	296,585	276,508	343,556	269,695	232,128	309,378	325,232
Operating Grants and Contributions	3,702,197	3,415,987	3,605,517	3,478,803	3,438,973	3,007,159	3,088,769	3,419,118	3,828,317	3,834,247
Capital Grants and Contributions	--	--	--	--	--	--	--	--	--	--
Total Governmental Activities Program Rev.	<u>4,269,610</u>	<u>4,122,479</u>	<u>4,241,540</u>	<u>4,186,495</u>	<u>4,122,879</u>	<u>3,812,714</u>	<u>3,783,810</u>	<u>4,063,835</u>	<u>4,529,353</u>	<u>4,465,968</u>
Business-type Activities:										
Charges for Services:										
Enterprise Activities	4,478	50,525	33,615	--	--	--	8,870	16,219	8,114	6,589
Operating Grants and Contributions	--	--	--	--	--	--	--	--	--	--
Capital Grants and Contributions	--	--	--	--	--	--	--	--	--	--
Total Business-type Activities Program Rev.	<u>4,478</u>	<u>50,525</u>	<u>33,615</u>	<u>--</u>	<u>--</u>	<u>--</u>	<u>8,870</u>	<u>16,219</u>	<u>8,114</u>	<u>6,589</u>
Total Primary Government Program Rev.	<u>4,274,088</u>	<u>4,173,004</u>	<u>4,275,155</u>	<u>4,186,495</u>	<u>4,122,879</u>	<u>3,812,714</u>	<u>3,792,680</u>	<u>4,080,054</u>	<u>4,537,467</u>	<u>4,472,557</u>
Net (Expense)/Revenue										
Governmental Activities	\$ (18,284,221)	\$ (18,571,080)	\$ (19,665,103)	\$ (19,325,268)	\$ (17,517,927)	\$ (18,381,376)	(19,273,296)	(19,875,072)	(21,194,019)	(21,745,181)
Business-type Activities	(24,614)	22,112	4,752	--	(711)	(580)	3,541	5,004	5,249	4,628
Total Primary Government Net Expense	<u>\$ (18,308,835)</u>	<u>\$ (18,548,968)</u>	<u>\$ (19,660,351)</u>	<u>\$ (19,325,268)</u>	<u>\$ (17,518,638)</u>	<u>\$ (18,381,956)</u>	<u>\$ (19,269,755)</u>	<u>\$ (19,870,068)</u>	<u>\$ (21,188,770)</u>	<u>\$ (21,740,553)</u>

TABLE L-3

GILMER INDEPENDENT SCHOOL DISTRICT
GENERAL REVENUES AND TOTAL CHANGE IN NET POSITION
LAST TEN FISCAL YEARS
(ACCRUAL BASIS OF ACCOUNTING)

	Fiscal Year									
	2008	2009	2010	2011	2012	2013	2014	2015	2016	2017
Net (Expense)/Revenue										
Governmental Activities	\$ (18,284,221)	\$ (18,571,080)	\$ (19,665,103)	\$ (19,325,268)	\$ (17,517,927)	\$ (18,381,376)	\$ (19,273,296)	\$ (19,875,072)	\$ (21,194,019)	\$ (21,745,181)
Business-type Activities	(24,614)	22,112	4,752	--	(711)	(580)	3,541	5,004	5,249	4,628
Total Primary Government Net Expense	<u>(18,308,835)</u>	<u>(18,548,968)</u>	<u>(19,660,351)</u>	<u>(19,325,268)</u>	<u>(17,518,638)</u>	<u>(18,381,956)</u>	<u>(19,269,755)</u>	<u>(19,870,068)</u>	<u>(21,188,770)</u>	<u>(21,740,553)</u>
General Revenues & Other Changes in Net Position										
Governmental Activities:										
Property Taxes	10,202,065	11,079,256	10,886,474	10,415,320	10,227,538	9,838,356	9,750,397	9,838,252	10,019,821	9,971,430
Investment Earnings	273,825	116,173	57,934	53,215	42,966	38,928	30,473	35,013	29,541	30,243
Unrestricted Grants and Contributions	7,805,458	7,434,472	8,181,653	8,634,775	7,688,791	7,582,461	8,583,998	9,209,916	10,585,821	9,792,610
Miscellaneous	249,260	159,726	521,431	184,888	431,943	230,534	548,769	254,253	188,140	208,731
Transfers	--	--	--	57,504	--	--	--	--	--	--
Total Governmental Activities	<u>18,530,608</u>	<u>18,789,627</u>	<u>19,647,492</u>	<u>19,345,702</u>	<u>18,391,238</u>	<u>17,690,279</u>	<u>18,913,637</u>	<u>19,337,434</u>	<u>20,823,323</u>	<u>20,003,014</u>
Business-type Activities:										
Investment Earnings	--	--	--	--	--	--	--	--	--	--
Miscellaneous	--	--	--	--	1,370	240	--	--	--	--
Transfers	--	--	--	(57,504)	--	--	--	--	--	--
Total Business-type Activities	<u>--</u>	<u>--</u>	<u>--</u>	<u>(57,504)</u>	<u>1,370</u>	<u>240</u>	<u>--</u>	<u>--</u>	<u>--</u>	<u>--</u>
Total Primary Government	<u>18,530,608</u>	<u>18,789,627</u>	<u>19,647,492</u>	<u>19,288,198</u>	<u>18,392,608</u>	<u>17,690,519</u>	<u>18,913,637</u>	<u>19,337,434</u>	<u>20,823,323</u>	<u>20,003,014</u>
Change in Net Position										
Governmental Activities	246,387	218,547	(17,611)	20,434	873,311	(691,097)	(359,659)	(537,638)	(370,696)	(1,742,167)
Business-type Activities	(24,614)	22,112	4,752	(57,504)	659	(340)	3,541	5,004	5,249	4,628
Total Primary Government	<u>\$ 221,773</u>	<u>\$ 240,659</u>	<u>\$ (12,859)</u>	<u>\$ (37,070)</u>	<u>\$ 873,970</u>	<u>\$ (691,437)</u>	<u>\$ (356,118)</u>	<u>\$ (532,634)</u>	<u>\$ (365,447)</u>	<u>\$ (1,737,539)</u>

TABLE L-4

GILMER INDEPENDENT SCHOOL DISTRICT

FUND BALANCES OF GOVERNMENTAL FUNDS

LAST TEN FISCAL YEARS

(MODIFIED ACCRUAL BASIS OF ACCOUNTING)

	Fiscal Year									
	2008	2009	2010	2011	2012	2013	2014	2015	2016	2017
General Fund										
Nonspendable	\$ 615	\$ --	\$ 9,180	\$ 7,128	\$ 3,834	\$ 4,581	\$ 18,032	\$ 3,137	\$ 6,029	\$ 3,570
Committed	--	2,116,137	2,000,000	2,500,000	2,500,000	2,500,000	2,500,000	--	--	--
Restricted	--	--	--	--	--	--	--	--	--	--
Assigned	--	--	--	--	--	377,017	172,217	88,000	73,000	30,000
Unassigned	4,831,241	2,910,428	2,924,171	2,509,948	3,118,822	2,426,297	2,095,385	4,649,102	4,501,350	3,602,888
Total General Fund	<u>\$ 4,831,856</u>	<u>\$ 5,026,565</u>	<u>\$ 4,933,351</u>	<u>\$ 5,017,076</u>	<u>\$ 5,622,656</u>	<u>\$ 5,307,895</u>	<u>\$ 4,785,634</u>	<u>\$ 4,740,239</u>	<u>\$ 4,580,379</u>	<u>\$ 3,636,458</u>
All Other Governmental Funds										
Nonspendable	\$ 37,570	\$ 24,721	\$ 24,798	\$ 17,985	\$ 26,738	\$ 19,540	\$ 29,726	\$ 21,865	\$ 20,787	\$ 19,269
Committed	36,371	56,588	42,743	75,633	81,601	88,733	76,683	71,792	64,406	63,411
Restricted	208,406	315,840	505,222	592,755	811,231	762,523	781,065	377,622	330,896	300,415
Assigned	--	--	--	--	--	--	--	--	--	--
Unassigned	--	--	--	--	--	--	--	--	--	--
Total All Other Governmental Funds	<u>\$ 282,347</u>	<u>\$ 397,149</u>	<u>\$ 572,763</u>	<u>\$ 686,373</u>	<u>\$ 919,570</u>	<u>\$ 870,796</u>	<u>\$ 887,474</u>	<u>\$ 471,279</u>	<u>\$ 416,089</u>	<u>\$ 383,095</u>

TABLE L-5

Page 1 of 2

GILMER INDEPENDENT SCHOOL DISTRICT
CHANGES IN FUND BALANCES OF GOVERNMENTAL FUNDS
LAST TEN FISCAL YEARS
(MODIFIED ACCRUAL BASIS OF ACCOUNTING)

	Fiscal Year									
	2008	2009	2010	2011	2012	2013	2014	2015	2016	2017
Revenues										
Local & Intermediate Sources										
Ad Valorem Taxes	\$ 10,202,065	\$ 11,079,256	\$ 10,886,474	\$ 10,415,320	\$ 10,227,538	\$ 9,838,356	\$ 9,750,397	\$ 9,838,252	\$ 10,019,821	\$ 9,899,292
Food Service Sales	315,523	352,715	327,784	337,842	318,929	301,596	276,012	267,877	248,834	201,708
Other	786,781	562,235	507,307	516,721	883,996	660,727	978,296	562,250	674,865	668,988
Total Local Revenue	11,304,369	11,994,206	11,721,565	11,269,883	11,430,463	10,800,679	11,004,705	10,668,379	10,943,520	10,769,988
State Program Revenues										
State Aid	8,638,661	8,239,044	8,244,121	8,830,067	8,445,767	8,336,089	9,447,567	10,125,594	11,531,468	10,741,104
Food Services	8,452	14,827	14,252	11,127	12,006	9,349	10,776	12,534	18,612	16,772
Other State Programs	453,845	507,462	387,450	326,478	160,312	207,529	174,198	463,854	225,012	408,186
Total State Revenue	9,100,958	8,761,333	8,645,823	9,167,672	8,618,085	8,552,967	9,632,541	10,601,982	11,775,092	11,166,062
Federal Program Revenues										
National Lunch/Breakfast Program	811,587	822,520	918,573	998,439	991,535	935,367	1,027,608	1,000,763	1,091,065	1,119,808
Other Federal Grants	1,565,110	1,266,606	2,222,774	1,947,467	1,518,143	1,198,210	1,012,618	1,026,289	1,044,062	1,151,595
Total Federal Revenue	2,376,697	2,089,126	3,141,347	2,945,906	2,509,678	2,133,577	2,040,226	2,027,052	2,135,127	2,271,403
Total Revenues	22,782,024	22,844,665	23,508,735	23,383,461	22,558,226	21,487,223	22,677,472	23,297,413	24,853,739	24,207,453
Expenditures										
Instruction	11,035,169	10,960,596	11,402,612	11,274,146	9,978,491	10,481,272	10,873,164	11,717,204	11,929,297	11,981,737
Instructional Resources & Media Services	510,575	458,619	529,299	517,753	469,426	513,868	548,414	550,783	586,234	618,141
Curriculum & Staff Development	404,268	393,878	390,405	340,001	423,083	387,846	359,490	396,773	516,731	514,846
Instructional Leadership	102,550	190,616	89,887	94,175	118,214	120,709	120,827	128,796	127,590	101,302
School Leadership	1,035,204	1,111,506	1,213,691	1,202,704	1,123,501	1,102,043	1,133,724	1,179,928	1,271,045	1,314,609
Guidance, Counseling & Evaluation Svcs	580,309	423,419	570,983	596,170	555,304	553,491	558,523	599,788	532,539	550,271
Health Services	222,454	249,094	257,399	265,911	242,437	246,827	232,751	280,516	288,845	288,141
Student Transportation	992,734	947,575	941,855	938,375	862,301	821,906	1,185,048	836,117	989,681	1,197,676
Food Service	1,246,537	1,223,828	1,118,448	1,245,771	1,142,255	1,292,480	1,319,908	1,376,007	1,407,361	1,387,325
Cocurricular/Extracurricular Activities	1,105,165	1,296,153	1,304,860	1,359,032	1,312,334	1,439,070	1,394,137	1,733,358	1,500,448	1,580,936
General Administration	748,875	535,193	565,788	555,336	531,209	532,948	581,690	598,736	646,297	696,681
Plant Maintenance & Operations	2,263,155	2,112,221	2,379,178	2,107,794	2,237,096	2,210,659	2,347,547	2,271,839	2,357,338	2,842,263
Security & Monitoring Services	98,936	112,950	178,187	145,011	142,811	155,028	152,174	168,566	170,922	152,088
Data Processing Services	112,918	100,729	119,309	117,357	113,722	130,298	124,126	127,492	220,102	123,704
Community Services	23,366	33,779	32,472	38,227	31,683	30,706	35,250	57,576	55,637	63,653
Principal on Long-Term Debt	704,373	735,093	674,494	701,511	678,728	1,047,445	917,332	845,442	1,010,291	1,091,089
Interest on Long-Term Debt	995,822	951,487	918,635	884,766	772,003	506,610	574,957	692,306	604,844	523,746
Bond Issuance Costs & Fees	1,173	1,173	1,173	1,173	161,333	201,680	75,539	2,105	2,100	2,550
Facilities Acquisition and Construction	94,003	305,116	58,914	147,932	306,488	2,217,719	69,135	83,163	113,954	--
Alternative/Special Education Svcs	137,910	426,000	459,073	495,292	483,950	468,622	441,372	457,040	521,850	570,822
Property Appraisal Services	--	216,129	219,673	215,194	197,237	198,316	211,453	204,046	215,682	216,983
Total Expenditures	22,415,496	22,785,154	23,426,335	23,243,631	21,883,606	24,659,543	23,256,561	24,307,581	25,068,788	25,818,563
Excess of Revenues										
Over (Under) Expenditures	366,528	59,511	82,400	139,830	674,620	(3,172,320)	(579,089)	(1,010,168)	(215,049)	(1,611,110)

TABLE L-5
Page 2 of 2

	Fiscal Year									
	2008	2009	2010	2011	2012	2013	2014	2015	2016	2017
Other Financing Sources (Uses)										
Refunding Bonds Issued	--	--	--	--	8,805,000	6,240,000	2,255,000	--	--	--
Capital-Related Debt										
Issued (Regular Bonds)	--	--	--	--	--	--	--	--	--	--
Sale of Real or Personal Property	--	--	--	--	--	--	--	--	--	--
Proceeds from Capital Leases	--	--	--	--	--	--	--	248,577	--	--
Non-Current Loan Proceeds	--	250,000	--	--	--	2,610,000	--	300,000	--	634,192
Transfers In	146,663	36,711	2,053	58,578	1,110	2,231	1,039,521	731,107	766,113	761,056
Premium or Discount										
On Issuance of Bonds	--	--	--	--	902,390	585,395	170,768	--	--	--
Prepaid Interest	--	--	--	--	--	13,639	--	--	--	--
Transfers Out	(146,633)	(36,711)	(2,053)	(1,074)	(1,110)	(2,231)	(1,039,521)	(731,107)	(766,113)	(761,056)
Payment to Bond Refunding										
Escrow Agent	--	--	--	--	(9,543,232)	(6,640,250)	(2,352,263)	--	--	--
Total Other Financing										
Sources (Uses)	--	--	57,504	164,158	2,808,784	73,505	548,577	--	--	634,192
Extraordinary Item										
Extraordinary Item (Resource)	--	--	--	--	--	--	--	--	--	--
Net Change in Fund Balances	\$ 366,528	\$ 59,511	\$ 139,904	\$ 303,988	\$ 3,483,404	\$ (3,098,815)	\$ (30,512)	\$ (1,010,168)	\$ (215,049)	\$ (976,918)
Debt Service As A Percentage Of Noncapital Expenditures	7.7%	7.6%	6.8%	6.9%	6.8%	7.0%	6.6%	6.4%	6.5%	6.3%

TABLE L-6

GILMER INDEPENDENT SCHOOL DISTRICT

ASSESSED VALUE AND ESTIMATED ACTUAL VALUE OF TAXABLE PROPERTY
LAST TEN FISCAL YEARS

Fiscal Year	Real Property & Minerals	Personal Property	Less: Tax-Exempt Property	Total Taxable Assessed Value	Total Direct Tax Rate	Estimated Actual Taxable Value	Taxable Assessed Value as a Percentage of Actual Taxable Value
2008	\$ 930,638,285	\$ 102,000,130	\$ 188,329,984	\$ 844,308,431	1.198	\$ 1,032,638,415	81.762%
2009	1,016,151,987	90,462,381	176,830,061	929,784,307	1.198	1,106,614,368	84.021%
2010	984,124,254	88,832,961	172,538,575	900,418,640	1.195	1,072,957,215	83.915%
2011	935,720,147	95,384,001	165,730,508	865,373,640	1.195	103,104,148	83.927%
2012	899,256,435	95,024,504	156,758,596	837,522,343	1.195	994,280,939	84.234%
2013	873,778,189	93,658,555	149,264,930	818,171,814	1.185	967,436,744	84.571%
2014	873,830,361	96,725,966	148,733,880	821,822,447	1.185	970,556,327	84.675%
2015	875,994,512	95,746,123	156,194,053	815,546,582	1.185	971,740,635	83.926%
2016	875,805,673	115,392,395	179,105,022	812,093,046	1.220	991,198,068	81.930%
2017	903,339,068	104,345,239	189,800,094	817,884,213	1.220	1,007,684,307	81.165%

Source: State Comptroller Property Value Study

TABLE L-7

GILMER INDEPENDENT SCHOOL DISTRICT
 DIRECT AND OVERLAPPING PROPERTY TAX RATES
 LAST TEN FISCAL YEARS

Fiscal Year	District Direct Rates			Overlapping Rates	
	Operating	Debt Service	Total	Upshur County	City of Gilmer
2008	1.040	0.158	1.198	0.450	0.652
2009	1.040	0.158	1.198	0.418	0.639
2010	1.040	0.155	1.195	0.418	0.636
2011	1.040	0.155	1.195	0.470	0.631
2012	1.040	0.155	1.195	0.512	0.634
2013	1.040	0.145	1.185	0.522	0.635
2014	1.170	0.015	1.185	0.567	0.625
2015	1.170	0.015	1.185	0.558	0.625
2016	1.170	0.050	1.220	0.569	0.629
2017	1.170	0.050	1.220	0.595	0.629

Source: Upshur County Tax Assessor/Collector

GILMER INDEPENDENT SCHOOL DISTRICT

PRINCIPAL PROPERTY TAX PAYERS
CURRENT YEAR AND NINE YEARS AGO

<u>Taxpayer</u>	2017			2008		
	Taxable Value	Rank	Percentage of Total Taxable Value	Taxable Value	Rank	Percentage of Total Taxable Value
Duoline Technologies LP	\$ 11,791,730	1	1.44%	\$ --	--	--
Union Pacific Railroad Co.	9,795,030	2	1.20%	--	--	--
Wal-Mart Stores Texas LLC	8,025,860	3	0.98%	--	--	--
AEP Southwestern Electric	7,602,350	4	0.93%	--	--	--
Breitburn Operating LP	7,087,872	5	0.87%	--	--	--
Rob Roy Industries	6,981,370	6	0.85%	8,031,520	10	0.78%
Enbridge Pipeline (NE TX)	5,513,290	7	0.67%	--	--	--
Upshur Rural Electric Coop	4,932,830	8	0.60%	--	--	--
BP America Production Co.	4,865,564	9	0.59%	28,946,824	3	2.80%
Sulphur River Exploration	4,711,101	10	0.58%	10,768,420	9	1.04%
Sulphur River Gathering LP	--	--	--	64,999,070	1	6.29%
TXOK Texas Energy Resources	--	--	--	29,246,354	2	2.83%
Apache Corp	--	--	--	22,803,700	4	2.21%
Exxon Mobil Corp	--	--	--	19,472,262	5	1.89%
Cordillera Texas LP	--	--	--	18,746,036	6	1.82%
Finley Resources	--	--	--	12,511,850	7	1.21%
Peak Energy Corp	--	--	--	11,777,560	8	1.14%
Total	\$ <u>71,306,997</u>		<u>8.71%</u>	\$ <u>227,303,596</u>		<u>22.01%</u>

Source: Upshur County Appraisal District

TABLE L-9

GILMER INDEPENDENT SCHOOL DISTRICT
PROPERTY TAX LEVIES AND COLLECTIONS
LAST TEN FISCAL YEARS

Fiscal Year	Taxes Levied for the Fiscal Year	Collected Within the Fiscal Year of the Levy		Collections In Subsequent Years	Total Collections to Date	
		Amount	Percentage of Levy		Amount	Percentage of Levy
2008	\$ 10,114,815	\$ 9,685,603	95.76%	\$ 363,391	\$ 10,048,994	99.35%
2009	11,138,816	10,724,785	96.28%	318,272	11,043,057	99.14%
2010	10,759,465	10,342,782	96.13%	317,900	10,660,682	99.08%
2011	10,341,215	9,799,297	94.76%	430,459	10,229,756	98.92%
2012	10,008,392	9,605,977	95.98%	267,012	9,872,989	98.65%
2013	9,695,336	9,299,157	95.91%	224,519	9,523,676	98.23%
2014	9,738,596	9,264,304	95.13%	296,903	9,561,207	98.18%
2015	9,664,227	9,346,129	96.71%	111,534	9,457,663	97.86%
2016	9,907,535	9,543,679	96.33%	122,604	9,666,283	97.56%
2017	9,978,187	9,561,046	95.82%	--	9,561,046	95.82%

Source: Upshur County Appraisal District and district records

TABLE L-10

GILMER INDEPENDENT SCHOOL DISTRICT

OUTSTANDING DEBT BY TYPE
LAST TEN FISCAL YEARS

Fiscal Year	Governmental Activities				Total Primary Government	Percentage of Personal Income *	Per Capita *
	General Obligation Bonds **	Capital Leases	Maintenance Tax Notes	Personal Property Notes			
2008	\$ 20,475,000	\$ 38,963	\$ --	\$ 923,279	\$ 21,437,242	5.87%	\$ 1,425
2009	20,030,000	--	--	922,148	20,952,148	5.50%	1,402
2010	19,560,000	--	--	717,665	20,277,665	5.59%	1,363
2011	19,065,000	--	--	511,154	19,576,154	5.26%	1,346
2012	19,409,115	--	--	352,425	19,761,540	5.00%	1,344
2013	19,146,280	--	2,110,000	549,980	21,806,260	5.33%	1,476
2014	18,533,484	--	2,005,000	407,648	20,946,132	4.78%	1,376
2015	17,732,839	165,718	1,900,000	610,139	20,408,696	4.34%	1,275
2016	16,908,801	82,859	1,790,000	437,707	19,219,367	3.62%	1,116
2017	16,080,592	--	1,680,000	893,669	18,654,261	3.31%	1,085

* - See Table L - 14 for personal income and population data.

** - Includes accreted interest on capital appreciation bonds and unamortized bond premium.

TABLE L-11

GILMER INDEPENDENT SCHOOL DISTRICT

RATIO OF NET BONDED DEBT TO ASSESSED VALUE AND NET BONDED DEBT PER CAPITA
LAST TEN FISCAL YEARS

Fiscal Year	General Obligation Bonds	Reserve for Debt Service	Net Bonded Debt	Taxable Assessed Value	Ratio (%) Net Bonded Debt to Taxable Value	Estimated Population	Bonded Debt Per Capita
2008	\$ 20,475,000	\$ 184,555	\$ 20,290,445	\$ 844,308,431	2.40%	15,043	\$ 1,361
2009	20,030,000	274,093	19,755,907	929,784,307	2.12%	14,945	1,340
2010	19,560,000	274,093	19,285,907	900,373,640	2.14%	14,872	1,315
2011	19,065,000	317,474	18,747,526	865,373,640	2.17%	14,544	1,311
2012	19,385,985	353,892	19,032,093	837,522,343	2.27%	14,708	1,318
2013	19,076,696	321,898	18,754,798	818,171,814	2.29%	14,778	1,291
2014	18,422,482	343,518	18,078,964	821,822,447	2.20%	15,221	1,210
2015	17,689,637	17,658	17,671,979	815,546,582	2.17%	16,005	1,105
2016	16,908,801	17,077	16,891,724	812,093,046	2.08%	17,226	982
2017	16,080,592	16,972	16,063,620	817,884,213	1.96%	17,191	935

GILMER INDEPENDENT SCHOOL DISTRICT
DIRECT AND OVERLAPPING GOVERNMENTAL ACTIVITIES DEBT

<u>Governmental Unit</u>	<u>Debt Outstanding</u>	<u>Estimated Percentage Applicable</u>	<u>Estimated Share of Direct and Overlapping Debt</u>
City of Gilmer	\$ 5,185,250	100.000%	\$ <u>5,185,250</u>
Subtotal, Overlapping Debt			5,185,250
District Direct Debt			<u>18,654,261</u>
Total Direct and Overlapping Debt			\$ <u><u>23,839,511</u></u>

Sources: Taxable value data used to estimate applicable percentages provided by the County Property Appraiser.
Debt outstanding data provided by each governmental unit.

The percentage of overlapping debt is estimated using taxable assessed property values. The City of Gilmer is entirely within the boundaries of Gilmer ISD and Gilmer ISD is within the boundaries of Upshur County. The overlapping percentage is the District's taxable assessed value divided by the County's taxable assessed value.

Upshur County had no outstanding debt at 8/31/2017.

TABLE L-13

GILMER INDEPENDENT SCHOOL DISTRICT
 LEGAL DEBT MARGIN INFORMATION
 LAST TEN FISCAL YEARS

	Fiscal Year									
	2008	2009	2010	2011	2012	2013	2014	2015	2016	2017
Debt Limit	\$ 103,263,942	\$ 110,661,437	\$ 107,295,722	\$ 103,110,414	\$ 99,428,094	\$ 96,743,674	\$ 97,055,633	\$ 97,174,064	\$ 99,119,807	\$ 100,768,431
Total Net Debt Applicable to Limit	<u>20,475,000</u>	<u>20,030,000</u>	<u>19,560,000</u>	<u>19,065,000</u>	<u>18,545,000</u>	<u>17,785,000</u>	<u>17,115,000</u>	<u>16,555,000</u>	<u>15,910,000</u>	<u>15,190,000</u>
Legal Debt Margin	\$ <u>82,788,942</u>	\$ <u>90,631,437</u>	\$ <u>87,735,722</u>	\$ <u>84,045,414</u>	\$ <u>80,883,094</u>	\$ <u>78,958,674</u>	\$ <u>79,940,633</u>	\$ <u>80,619,064</u>	\$ <u>83,209,807</u>	\$ <u>85,578,431</u>
Total Net Debt Applicable to the Limit As a Percentage of Debt Limit	19.83%	18.10%	18.23%	18.49%	18.65%	18.38%	17.63%	17.04%	16.05%	15.07%

Legal Debt Margin Calculation for the Current Fiscal Year

Assessed Value	\$ 1,007,684,307
Debt Limit (10% of Assessed Value)	100,768,431
Debt Applicable to Limit:	
General Obligation Bonds	15,190,000
Total Net Debt Applicable to Limit	<u>15,190,000</u>
Legal Debt Margin	\$ <u>85,578,431</u>

TABLE L-14

GILMER INDEPENDENT SCHOOL DISTRICT
 DEMOGRAPHIC AND ECONOMIC STATISTICS
 LAST TEN CALENDAR YEARS

Calendar Year	(1) Population	Personal Income	Per Capita Personal Income	(2) Unemployment Rate
2008	15,043	\$ 365,469,685	\$ 24,295	4.10%
2009	14,945	381,232,005	25,509	8.60%
2010	14,872	362,430,640	24,370	7.70%
2011	14,544	372,151,872	25,588	7.00%
2012	14,708	395,159,836	26,867	6.70%
2013	14,778	409,062,286	27,680	5.50%
2014	15,221	438,166,927	28,787	4.90%
2015	16,005	469,954,815	29,363	5.20%
2016	17,226	531,094,806	30,831	6.20%
2017	17,191	562,850,531	32,741	5.20%

Sources:

(1) Upshur County

(2) Texas Workforce Commission

GILMER INDEPENDENT SCHOOL DISTRICT

PRINCIPAL EMPLOYERS

CURRENT YEAR AND NINE YEARS AGO

<u>Employer</u>	2017			2008		
	<u>Employees</u>	<u>Rank</u>	<u>Percentage of Total Employment</u>	<u>Employees</u>	<u>Rank</u>	<u>Percentage of Total Employment</u>
Gilmer ISD	365	1	1.84%	376	1	3.03%
Wal Mart	276	2	1.39%	278	2	2.24%
County Government	236	3	1.19%	230	3	1.85%
Rob Roy Industries	141	4	0.71%	143	5	1.15%
Etex Telephone	121	5	0.61%	135	6	1.09%
Custom Commodities	115	6	0.58%	85	8	0.68%
Upshur Rural Electric	101	7	0.51%	89	7	0.72%
First National Bank	76	8	0.38%	76	9	0.61%
City of Gilmer	51	9	0.26%	55	10	0.44%
Coil Specialist	48	10	0.24%	--	--	--
East Texas Medical Center	--	--	--	171	4	1.38%
Total	<u>1,530</u>		<u>7.71%</u>	<u>1,638</u>		<u>13.19%</u>

Source: Upshur County Chamber of Commerce/Upshur County Economic Development Corporation

TABLE L-16

GILMER INDEPENDENT SCHOOL DISTRICT
 FULL-TIME-EQUIVALENT EMPLOYEES BY FUNCTION/PROGRAM
 LAST TEN FISCAL YEARS

	Full-Time-Equivalent Employees as of Year End									
	2008	2009	2010	2011	2012	2013	2014	2015	2016	2017
Teachers										
Regular	178.9	175.6	194.3	193.6	179.1	182.3	190.0	186.6	185.4	178.8
Special Duty	8.3	12.2	--	--	--	--	--	--	--	--
Professional Support										
Psychological Associate	--	--	1.0	1.0	1.0	--	--	--	--	--
Counselor	5.0	6.0	6.0	6.0	6.0	7.0	6.0	7.0	6.1	8.0
Educational Diagnostician	1.0	--	--	--	--	--	--	--	--	--
Librarian	3.9	3.9	4.0	4.0	4.0	4.0	3.9	4.0	4.0	4.0
School Nurse	4.0	5.0	5.0	5.0	5.0	5.0	4.7	5.4	5.3	5.3
LSSP/Psychologist	1.0	--	--	--	--	--	1.0	--	--	--
Speech-related	1.9	--	--	--	--	--	--	--	--	--
Teacher Facilitator	--	--	1.0	2.0	4.0	4.0	4.0	4.0	7.0	7.0
Athletic Trainer	1.0	1.0	1.0	1.0	2.0	2.0	1.6	2.6	2.0	2.0
Non-Campus Professional	3.9	5.5	2.5	3.0	1.6	1.6	4.6	5.0	2.7	9.7
Other Campus Professional	--	--	--	--	--	--	--	--	--	14.0
Campus Administration										
Assistant Principal	6.0	7.0	7.0	7.0	6.5	6.0	6.6	7.0	8.5	8.0
Principal	4.1	4.0	4.0	4.0	4.0	3.5	3.8	3.5	4.0	4.0
Athletic Director	0.9	0.8	0.3	0.1	0.1	0.3	0.3	0.5	0.3	0.5
Central Administration										
Superintendent	1.0	1.0	1.0	1.0	1.0	1.0	1.0	1.0	1.0	1.0
Business Manager	1.0	1.0	1.0	1.0	1.0	1.0	1.0	1.0	1.0	1.0
Assistant Superintendent	1.0	1.0	1.0	1.0	1.5	1.5	1.5	1.5	3.0	3.0
Instructional Officer	1.0	1.0	2.5	3.6	2.0	2.0	1.0	1.0	1.5	2.0
Educational Aides	37.0	42.0	39.0	36.8	31.9	32.2	31.8	40.9	29.9	38.1
Auxiliary Staff	113.1	96.2	114.4	103.8	97.8	91.7	90.4	87.0	87.5	78.6
Total	374.0	363.2	385.0	373.9	348.5	345.1	353.2	358.0	349.2	365.0

Source: Nonfinancial information from district records

TABLE L-17

GILMER INDEPENDENT SCHOOL DISTRICT
 OPERATING STATISTICS
 LAST TEN FISCAL YEARS

Fiscal Year	Enrollment	Operating Expenditures	Cost Per Pupil	Percentage Change	Expenses	Cost Per Pupil	Percentage Change	Teaching Staff	Pupil-Teacher Ratio	Percentage of Students Receiving Free or Reduced-Price Meals
2008	2,339	22,415,496	9,583	-2.36%	22,582,923	9,655	7.93%	187	12.5	54.2%
2009	2,375	22,785,154	9,594	0.11%	22,721,972	9,567	-0.91%	191	12.4	55.2%
2010	2,350	23,426,335	9,969	3.91%	23,935,506	10,185	6.46%	196	12.0	57.0%
2011	2,422	23,243,631	9,597	-3.73%	23,511,763	9,708	-4.69%	195	12.4	54.7%
2012	2,413	21,883,606	9,069	-5.50%	21,640,806	8,968	7.61%	179	13.5	61.1%
2013	2,393	24,659,543	10,305	13.63%	22,194,090	9,275	3.41%	182	13.1	61.8%
2014	2,467	23,256,561	9,427	-8.52%	23,057,106	9,346	7.70%	190	13.0	66.6%
2015	2,415	24,307,581	10,065	6.77%	23,938,907	9,913	6.07%	187	12.9	63.3%
2016	2,421	25,068,788	10,355	2.88%	25,723,372	10,625	7.19%	186	13.0	68.2%
2017	2,418	25,818,563	10,678	3.12%	26,211,149	10,840	2.02%	179	13.5	67.9%

Source: Nonfinancial information from district records.

GILMER INDEPENDENT SCHOOL DISTRICT

TEACHER BASE SALARIES

LAST TEN FISCAL YEARS

<u>Fiscal Year</u>	<u>Minimum Salary</u>	<u>Maximum Salary</u>	<u>Statewide Minimum Average</u>	<u>Statewide Maximum Average</u>
2008	\$ 30,567	\$ 49,388	\$ 39,372	\$ 56,354
2009	31,000	50,088	40,372	57,325
2010	31,800	50,888	41,165	58,427
2011	32,000	51,757	41,272	58,691
2012	32,000	51,757	40,911	58,031
2013	32,000	52,957	41,878	58,291
2014	32,500	53,209	43,480	59,032
2015	32,500	54,059	44,540	59,787
2016	34,000	55,625	45,507	60,613
2017	34,500	56,859	46,199	60,919

Sources: District records; Texas Education Agency

TABLE L-19

GILMER INDEPENDENT SCHOOL DISTRICTSCHOOL BUILDING INFORMATION
LAST TEN FISCAL YEARS

	Fiscal Year									
	2008	2009	2010	2011	2012	2013	2014	2015	2016	2017
<u>School</u>										
Elementary										
Buildings	1	1	1	1	1	1	1	1	1	1
Square Feet	176,193	176,193	176,193	176,193	176,193	176,193	176,193	176,193	176,193	176,193
Intermediate										
Buildings	3	3	3	3	3	3	3	3	3	3
Square Feet	50,883	50,883	50,883	50,883	50,883	50,883	50,883	50,883	50,883	50,883
Junior High										
Buildings	6	6	6	6	6	6	6	6	6	6
Square Feet	77,034	77,034	77,034	77,034	77,034	77,034	77,034	77,034	77,034	77,034
High School										
Buildings	10	10	10	10	10	10	10	10	10	10
Square Feet	207,123	207,123	207,123	207,123	207,123	207,123	207,123	207,123	207,123	207,123
Instructional Portables										
Buildings	2	2	2	2	2	2	2	2	2	2
Square Feet	66,000	66,000	66,000	66,000	66,000	66,000	66,000	66,000	66,000	66,000
<u>Other</u>										
Administration										
Buildings	2	2	2	2	2	2	2	2	2	2
Square Feet	29,082	29,082	29,082	29,082	29,082	29,082	29,082	29,082	29,082	29,082
Transportation										
Buildings	1	1	1	1	1	1	1	1	1	1
Buses	38	38	40	40	40	40	41	38	40	42
Athletics										
Football Fields	1	1	1	1	1	1	1	1	1	1
Running Tracks	1	1	1	1	1	1	1	1	1	1
Baseball Fields	1	1	1	1	1	1	1	1	1	1
Softball Fields	1	1	1	1	1	1	1	1	1	1
Playgrounds	2	2	3	3	3	3	3	3	3	3

Source: District records

This page is left blank intentionally.

Single Audit Section

KAREN A. JACKS & ASSOCIATES, P.C.

Certified Public Accountants

P.O. Box 3167
Longview, Texas 75606

Phone: 903-238-8822

1501 Colony Circle
Longview, Texas 75604

Fax: 903-238-9838

Karen A. Jacks, CPA, CGMA
Peggy J. Lantz, CPA

Sherry Davis, CPA
Chanie A. Johnson, CPA

Independent Auditors' Report on Internal Control over Financial Reporting and
On Compliance and Other Matters Based on an Audit of Financial Statements
Performed In Accordance With *Government Auditing Standards*

Board of Trustees
Gilmer Independent School District
500 Trinity Street
Gilmer, Texas 75644

Members of the Board of Trustees:

We have audited, in accordance with the auditing standards generally accepted in the United States of America and the standards applicable to financial audits contained in *Government Auditing Standards* issued by the Comptroller General of the United States, the financial statements of the governmental activities, the business-type activities, each major fund, and the aggregate remaining fund information of Gilmer Independent School District, as of and for the year ended August 31, 2017, and the related notes to the financial statements, which collectively comprise Gilmer Independent School District's basic financial statements, and have issued our report thereon dated December 5, 2017.

Internal Control Over Financial Reporting

In planning and performing our audit of the financial statements, we considered the Gilmer Independent School District's internal control over financial reporting (internal control) to determine the audit procedures that are appropriate in the circumstances for the purpose of expressing our opinions on the financial statements, but not for the purpose of expressing an opinion on the effectiveness of the Gilmer Independent School District's internal control. Accordingly, we do not express an opinion on the effectiveness of the Gilmer Independent School District's internal control.

A deficiency in internal control exists when the design or operation of a control does not allow management or employees, in the normal course of performing their assigned functions, to prevent, or detect and correct, misstatements on a timely basis. A *material weakness* is a deficiency, or a combination of deficiencies, in internal control, such that there is a reasonable possibility that a material misstatement of the entity's financial statements will not be prevented, or detected and corrected on a timely basis. A *significant deficiency* is a deficiency, or a combination of deficiencies, in internal control that is less severe than a material weakness, yet important enough to merit attention by those charged with governance.

Our consideration of internal control was for the limited purpose described in the first paragraph of this section and was not designed to identify all deficiencies in internal control that might be material weaknesses or significant deficiencies. Given these limitations, during our audit we did not identify any deficiencies in internal control that we consider to be material weaknesses. However, material weaknesses may exist that have not been identified.

Compliance and Other Matters

As part of obtaining reasonable assurance about whether the Gilmer Independent School District's financial statements are free from material misstatement, we performed tests of its compliance with certain provisions of laws, regulations, contracts, and grant agreements, noncompliance with which could have a direct and material effect on the determination of financial statement amounts. However, providing an opinion on compliance with those provisions was not an objective of our audit, and accordingly, we do not express such an opinion. The results of our tests disclosed no instances of noncompliance or other matters that are required to be reported under *Government Auditing Standards*.

Purpose of this Report

The purpose of this report is solely to describe the scope of our testing of internal control and compliance and the results of that testing, and not to provide an opinion on the effectiveness of the entity's internal control or on compliance. This report is an integral part of an audit performed in accordance with *Government Auditing Standards* in considering the entity's internal control and compliance. Accordingly, this communication is not suitable for any other purpose.

Karen A. Jacks & Associates, P.C.

Karen A. Jacks & Associates, P.C.

Longview, Texas
December 5, 2017

KAREN A. JACKS & ASSOCIATES, P.C.

Certified Public Accountants

P.O. Box 3167
Longview, Texas 75606

Phone: 903-238-8822

1501 Colony Circle
Longview, Texas 75604

Fax: 903-238-9838

Karen A. Jacks, CPA, CGMA
Peggy J. Lantz, CPA

Sherry Davis, CPA
Chanie A. Johnson, CPA

Independent Auditors' Report on Compliance for Each Major Program and on Internal Control Over Compliance Required by the Uniform Guidance

Board of Trustees
Gilmer Independent School District
500 Trinity Street
Gilmer, Texas 75644

Members of the Board of Trustees:

Report on Compliance for Each Major Federal Program

We have audited the Gilmer Independent School District's compliance with the types of compliance requirements described in the *OMB Compliance Supplement* that could have a direct and material effect on each of the Gilmer Independent School District's major federal programs for the year ended August 31, 2017. Gilmer Independent School District's major federal programs are identified in the summary of auditor's results section of the accompanying schedule of findings and questioned costs.

Management's Responsibility

Management is responsible for compliance with federal statutes, regulations, and the terms and conditions of its federal awards applicable to its federal programs.

Auditor's Responsibility

Our responsibility is to express an opinion on compliance for each of Gilmer Independent School District's major federal programs based on our audit of the types of compliance requirements referred to above. We conducted our audit of compliance in accordance with auditing standards generally accepted in the United States of America; the standards applicable to financial audits contained in *Government Auditing Standards*, issued by the Comptroller General of the United States; and the audit requirements of Title 2 U.S. Code of Federal Regulations Part 200, *Uniform Administrative Requirements, Cost Principles, and Audit Requirements for Federal Awards* (Uniform Guidance). Those standards and the Uniform Guidance require that we plan and perform the audit to obtain reasonable assurance about whether noncompliance with the types of compliance requirements referred to above that could have a direct and material effect on a major federal program occurred. An audit includes examining, on a test basis, evidence about the Gilmer Independent School District's compliance with those requirements and performing such other procedures as we considered necessary in the circumstances.

We believe that our audit provides a reasonable basis for our opinion on compliance for each major federal program. However, our audit does not provide a legal determination of the Gilmer Independent School District's compliance.

Opinion on Each Major Federal Program

In our opinion, the Gilmer Independent School District complied, in all material respects, with the types of compliance requirements referred to above that could have a direct and material effect on each of its major federal programs for the year ended August 31, 2017.

Report on Internal Control Over Compliance

Management of the Gilmer Independent School District is responsible for establishing and maintaining effective internal control over compliance with the types of compliance requirements referred to above. In planning and performing our audit of compliance, we considered the Gilmer Independent School District's internal control over compliance with the types of requirements that could have a direct and material effect on each major federal program to determine the auditing procedures that are appropriate in the circumstances for the purpose of expressing an opinion on compliance for each major federal program and to test and report on internal control over compliance in accordance with the Uniform Guidance, but not for the purpose of expressing an opinion on the effectiveness of internal control over compliance. Accordingly, we do not express an opinion on the effectiveness of the Gilmer Independent School District's internal control over compliance.

A deficiency in internal control over compliance exists when the design or operation of a control over compliance does not allow management or employees, in the normal course of performing their assigned functions, to prevent, or detect and correct, noncompliance with a type of compliance requirement of a federal program on a timely basis. *A material weakness in internal control over compliance* is a deficiency, or combination of deficiencies, in internal control over compliance, such that there is a reasonable possibility that material noncompliance with a type of compliance requirement of a federal program will not be prevented, or detected and corrected, on a timely basis. *A significant deficiency in internal control over compliance* is a deficiency, or a combination of deficiencies, in internal control over compliance with a type of compliance requirement of a federal program that is less severe than a material weakness in internal control over compliance, yet important enough to merit attention by those charged with governance.

Our consideration of internal control over compliance was for the limited purpose described in the first paragraph of this section and was not designed to identify all deficiencies in internal control over compliance that might be material weaknesses or significant deficiencies. We did not identify any deficiencies in internal control over compliance that we considered to be material weaknesses. However, material weaknesses may exist that have not been identified.

The purpose of this report on internal control over compliance is solely to describe the scope of our testing of internal control over compliance and the results of that testing based on the requirements of the Uniform Guidance. Accordingly, this report is not suitable for any other purpose.

Karen A. Jacks & Associates, P.C.

Karen A. Jacks & Associates, P.C.

Longview, Texas
December 5, 2017

GILMER INDEPENDENT SCHOOL DISTRICT
SCHEDULE OF FINDINGS AND QUESTIONED COSTS
FOR THE YEAR ENDED AUGUST 31, 2017

A. Summary of Auditors' Results

1. Financial Statements

Type of auditors' report issued: Unmodified

Internal control over financial reporting:

One or more material weaknesses identified? Yes X No

One or more significant deficiencies identified that are not considered to be material weaknesses? Yes X None Reported

Noncompliance material to financial statements noted? Yes X No

2. Federal Awards

Internal control over major programs:

One or more material weaknesses identified? Yes X No

One or more significant deficiencies identified that are not considered to be material weaknesses? Yes X None Reported

Type of auditor's report issued on compliance for major programs: Unmodified

Any audit findings disclosed that are required to be reported in accordance with Title 2 U.S. Code of Federal Regulations (CFR) Part 200? Yes X No

Identification of major programs:

<u>CFDA Number(s)</u>	<u>Name of Federal Program or Cluster</u>
10.553/10.555/10.559	Child Nutrition Cluster

Dollar threshold used to distinguish between type A and type B programs: \$750,000

Auditee qualified as low-risk auditee? X Yes No

B. Financial Statement Findings

NONE

C. Federal Award Findings and Questioned Costs

NONE

GILMER INDEPENDENT SCHOOL DISTRICT
SUMMARY SCHEDULE OF PRIOR AUDIT FINDINGS
FOR THE YEAR ENDED AUGUST 31, 2017

<u>Finding/Recommendation</u>	<u>Current Status</u>	<u>Management's Explanation If Not Implemented</u>
None.		

GILMER INDEPENDENT SCHOOL DISTRICT
CORRECTIVE ACTION PLAN
FOR THE YEAR ENDED AUGUST 31, 2017

None required.

GILMER INDEPENDENT SCHOOL DISTRICT
SCHEDULE OF EXPENDITURES OF FEDERAL AWARDS
FOR THE YEAR ENDED AUGUST 31, 2017

EXHIBIT K-1
Page 1 of 2

(1)	(2)	(2A)	(3)
Federal Grantor/ Pass-Through Grantor/ Program or Cluster Title	Federal CFDA Number	Pass- Through Entity Identifying Number	Federal Expenditures
CHILD NUTRITION CLUSTER:			
<u>U. S. Department of Agriculture</u>			
Passed Through State Department of Education:			
School Breakfast Program	10.553	01085	\$ 357,946
National School Lunch Program	10.555	01085	678,407
Total Passed Through State Department of Education			<u>1,036,353</u>
Passed Through Texas Department of Agriculture:			
National School Lunch Program (Non-cash)	10.555	01085	83,455
Summer Food Service Program	10.559	01085	37,385
Summer Food Service Program (Non-cash)	10.559	01085	100
Total CFDA Number 10.559			<u>37,485</u>
Total Passed Through Texas Department of Agriculture			<u>120,940</u>
Total U. S. Department of Agriculture			<u>1,157,293</u>
Total Child Nutrition Cluster			<u>1,157,293</u>
SPECIAL EDUCATION (IDEA) CLUSTER:			
<u>U. S. Department of Education</u>			
Passed Through Upshur County Shared Services Arrangement:			
IDEA-B Formula	84.027	176600012309016600	248,529
IDEA-B Formula	84.027	186610012309016610	22,777
Total CFDA Number 84.027			<u>271,306</u>
IDEA-B Preschool	84.173	176610012309016610	55,244
IDEA-B Preschool	84.173	186610012309016610	3,703
Total CFDA Number 84.173			<u>58,947</u>
Total Passed Through Upshur County Shared Services Arrangement			<u>330,253</u>
Total U. S. Department of Education			<u>330,253</u>
Total Special Education (IDEA) Cluster			<u>330,253</u>
OTHER PROGRAMS:			
<u>U. S. Department of Education</u>			
Passed Through State Department of Education:			
ESEA Title I Part A - Improving Basic Programs	84.010	17610101230902	545,566
ESEA Title I Part A - Improving Basic Programs	84.010	18610101230902	6,181
Total CFDA Number 84.010			<u>551,747</u>
Career and Technical - Basic Grant	84.048	17420006230902	30,547
Title III Part A English Language Acquisition and Language Enhancement	84.365	17671001230902	19,099
ESEA Title II Part A - Teacher & Principal Training & Recruiting	84.367a	17694501230902	133,053
Summer School LEP	84.369	79551402	1,165
Total Passed Through State Department of Education			<u>735,611</u>
Total U. S. Department of Education			<u>735,611</u>

GILMER INDEPENDENT SCHOOL DISTRICT
SCHEDULE OF EXPENDITURES OF FEDERAL AWARDS
FOR THE YEAR ENDED AUGUST 31, 2017

EXHIBIT K-1
Page 2 of 2

(1)	(2)	(2A)	(3)
Federal Grantor/ Pass-Through Grantor/ Program or Cluster Title	Federal CFDA Number	Pass- Through Entity Identifying Number	Federal Expenditures
<u>U. S. Department of Defense</u>			
Direct Program:			
ROTC	12.000		48,246
Total U. S. Department of Defense			48,246
TOTAL EXPENDITURES OF FEDERAL AWARDS			\$ 2,271,403

The accompanying notes are an integral part of this schedule.

GILMER INDEPENDENT SCHOOL DISTRICT
NOTES TO THE SCHEDULE OF EXPENDITURES OF FEDERAL AWARDS
FOR THE YEAR ENDED AUGUST 31, 2017

Note A - Basis of Presentation

The accompanying schedule of expenditures of federal awards includes the federal grant activity of Gilmer Independent School District and is presented on the modified accrual basis of accounting. The information in this schedule is presented in accordance with the requirements of Title 2 U.S. *Code of Federal Regulations* (CFR) Part 200 *Uniform Administrative Requirements, Cost Principles, and Audit Requirements for Federal Awards*. Therefore, some amounts presented in this schedule may differ from amounts presented in, or used in the preparation of, the basic financial statements.

Note B - Food Distribution

Nonmonetary assistance is reported in the schedule at fair market value of the commodities received and disbursed. At August 31, 2017, the District has food commodities totaling \$38,375 in inventory.